

IMPORTANT

*Report in part or whole
cannot be quoted or
reproduced*

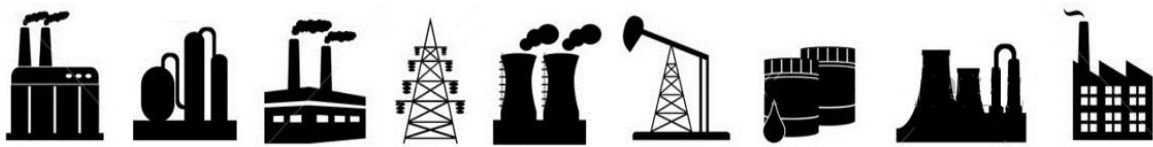
RESTRICTED

For official use only

SEPTEMBER 2022



**MONTHLY SURVEY OF INDUSTRIAL
PRODUCTION & EMPLOYMENT IN THE PUNJAB**



BUREAU OF STATISTICS

Planning & Development Department
Government of the Punjab, Lahore

www.bos.gop.pk

PREFACE

Bureau of statistics has been issuing this Monthly Survey of Industrial Production and Employment Report since October 1972. This report provides important statistics in respect of industrial production & employment, employment cost and other aspects of manufacturing activities e.g. consumption of raw material, export of industrial products, import of raw material and productivity of labour etc. These statistics are pre-requisite for sound economic planning as well as for measuring the performance/growth of the industrial sector (GDP estimates regarding industrial sector).

This report contains statistics regarding 46 important industries, manufacturing about almost selected items, contributing 72% of the total value added of large scale manufacturing sector in the province. This report covers more than 2000 industrial units from all over the Punjab.

This report gives information regarding General Index as compared to base period 2005-06, and comprehensive analytical note over the current status of the industrial growth at different sectors. Tables of production & employment give comparisons with the previous month and the same month of the previous year as well as comparisons among financial periods. Performance analysis of 13 major items pertaining to detailed tables & graphical explanation is given in this report.

All possible efforts have been made to incorporate the latest available data in this report. It is hoped that this report will be useful to the policy makers, planners, researchers and other users of industrial/economic data in public as well as private sector.

Suggestions for further improvements will be welcomed.

(SAJID RASUL)
Director General
Bureau of Statistics,
Government of the Punjab

CONTENTS

Sr.#	Description	Page #
i	Explanatory Note	I – IV
ii	Table of General Index of Industrial Production	1
iii	Analytical Note: Industrial Production and Employment September 2022	2 - 3

TABLES

1	Production Volume of Selected Items Pertaining to Large-Scale Manufacturing Sector, September 2022 VS August 2022	4 - 5
2	Production Volume of Selected Items Pertaining to Large-Scale Manufacturing Sector, September 2022 VS September 2021	6 - 7
3	Production Volume of Selected Items Pertaining to Large-Scale Manufacturing Sector, 2022-23 (Jul - Sep:) VS 2021-22 (Jul – Sep:)	8 - 9
4	Total Employment Regarding Large-Scale Industries, September 2022, August 2022 and September 2021	10
5	Total Number of Production Workers Regarding Large-Scale Industries, August 2022, September 2022 and September 2021	11
6	Average Monthly Total Employment Regarding Large-Scale Industries, 2022-23 (Jul - Sep:) VS 2021-22 (Jul - Sep:)	12
7	Average Monthly Number of Production Workers Regarding Selected Large Scale Industries, 2022-23 (Jul - Sep:) VS 2021-22 (Jul – Sep:)	13

ANNEXURES

I	Performance of Cotton Textile Industry	14 - 20
II	Performance of Woollen Textile Industry	21 - 23
III	Performance of Vegetable Ghee/Cooking Oil Industry	24 - 28
IV	Performance of Beverages Industry	29 - 30
V	Performance of Sugar Industry	31 - 33
VI	Performance of Cigarettes Industry	34 - 35
VII	Performance of Cement Industry	36 - 40
VIII	Performance of Fertilizer Industry	41 - 46
IX	Performance of Footwear Industry	47 - 48
X	Performance of Leather Tanning Industry	49 - 50
XI	Performance of Paper & Paper Board Industry	51 - 52
XII	Performance of Light Engineering Industry	53 - 59
XIII	Performance of Pharmaceutical Industry	60 - 63

APPENDIX

A	Telephone Numbers	64
---	-------------------	----

List of Tables

Table No.	Title of Table	Page No.
1	General Index of Industrial Production	1
2	Production Volume of Selected Items Pertaining to Large-Scale Manufacturing Sector, September -2022 VS August -2022	4
3	Production Volume of Selected Items Pertaining to Large-Scale Manufacturing Sector, September -2022 VS September 2021	6
4.	Production Volume of Selected Items Pertaining to Large-Scale Manufacturing Sector 2022-23,(July- September) VS 2021-2022 (July- September)	8
5	Total Employment Regarding Selected Large-Scale Industries, August 2022, September 2022 and September 2021.	10
6	Total Number of Production Workers Regarding Selected Large-Scale Industries August 2022, September 2022 and September 2021	11
7.	Average Monthly Total Employment Regarding Selected Large-Scale Industries 2022-23 (July- September) and 2021-22 (July- September)	12
8	Average Monthly Production Workers regarding selected Large-Scale Industries 2022-23 (July- September) and 2021-22 (July- September)	13
9	Production of Man Made/Blended Yarn and Cloth	15
10	Detail of the Purchase, Sale Consumption and Stock of Cotton Bales.	17
11	Production, Purchase, Consumption, Sale and Stock of Cotton Yarn	18
12	Production .Purchase, Sale and Stock of Cotton Cloth	19
13	Employment, Wages/Salaries of Cotton Textile Industry	20
14	Manufacturing Activity of Woollen Industry	23
15	Detail of the Stock Purchase, Consumed and Sale of Edible Oil	26
16	Detail of Production, Sale and Stock of Vegetable Ghee/Cooking Oil	27
17	Employment, Wages/Salaries of Vegetable Ghee/Cooking Oil Industry	28
18	Manufacturing Activity of Beverages Industry	30
19	Manufacturing Activity of Sugar Industry	32
20	Employment, Wages/Salaries of Sugar Industry	33
21	Manufacturing Activity of Cigarettes Industry	35
22	Detail of Production, Consumption and Stock of Clinker	38
23	Detail of Production, Sale and Stock of Cement	39
24	Employment and Wages/Salaries of Cement Industry	40
25	Detail of Production, Sale and Stock of Urea and Amm. Sulphate	43
26	Detail of Production, Sale and Stock of Super Phosphate and Amm.Nitrate	44
27	Detail of Production, Sale and Stock of Nitro Phosphate	45
28	Employment Wages/Salaries of Fertilizer Industry	46
29	Manufacturing Activity of Footwear Industry	48
30	Manufacturing Activity of Leather Tanning Industry	50
31	Manufacturing Activity of Paper and Paper Board Industry	51
32	Manufacturing Activity of Light Engineering Industry	57
33	Total Employment of Light Engineering Industry	58
34	Production Workers of Light Engineering Industry	59
35	Manufacturing Activity of Pharmaceutical Industry	62
36	Employment and Wages/Salaries of Pharmaceutical Industry	63

List of Figures

Fig. No.	Title of Figures	Page No.
1	Quantum Index of Manufacturing Industries	1
2	Production of Cotton Yarn	16
3	Production of Cotton Cloth	16
4	Production of Knitting Wool	21
5	Production of Woollen Yarn	22
6	Production of Woollen and Worsted Cloth	22
7.	Production of Vegetable Ghee	24
8	Production of Cooking Oil	25
9	Production of Vegetable Ghee/Cooking Oil	25
10	Production of Fruit Juices	29
11	Production of Soft Drinks	29
12	Production of Sugar	31
13	Production of Cigarettes	34
14	Production of Clinker	36
15	Production of Cement	37
16	Production of Urea	41
17	Production of Super Phosphate	42
18	Production of Amm. Nitrate	42
19	Production of Nitro Phosphate	42
20	Production of Footwear	47
21	Production of Upper Leather	49
22	Production of Sole Leather	49
23	Production of Paper	51
24	Production of Paper Board	51
25	Production of Re-Rolled Steel	53
26	Production of Bicycles	54
27	Production of Electric Fans	55
28	Production of Electric Motors	56
29	Production of Diesel Engines	56
30	Production of Tablets	60
31	Production of Liquids	61
32	Production of Capsules	61
33	Production of Injections	61

I
EXPLANATORY NOTE

To have current information on production, employment and other aspects of manufacturing activities e.g. consumption of raw material, wages/salaries, export of industrial products, imports of raw material and productivity of labour etc. for economic planning, evaluation of industrial development and taking other policy related decisions, Government of the Punjab had decided in October 1972 to undertake a Monthly Survey on Industrial Production and Employment.

Prior to this Survey, the only data available on Industrial Statistics was the results of Census of Manufacturing Industries (C.M.I) that were available with the time lag of 2-3 years with a question mark on very high rate of non- response. This high rate of non-response affected the consistency of the results. Therefore, these results were of little use for current and future planning except for historical, research and academic interests/purposes. So Monthly Survey of Industrial Production and Employment was considered to be suitable for Economic Planning as well as for measuring the performance/growth of the industrial sector.

Only 15 industries and their 113 factories were selected to cover initially in October 1972. This report now contains statistics regarding 46 important industries, manufacturing about 100 selected items, contributing 72% of the total value added of large scale manufacturing sector in the province based on base year 2005-06 and covers more than 2000 industrial units from all over the Punjab.

Questionnaire

Keeping in view the pre-determined purpose the data on Industrial Inputs (raw material), Outputs (finished products), Sales, exports, Stocks, Employment & Employment Cost etc. are designed on the available information from CMI returns. These Questionnaires have been pre-tested in some of the large units manufacturing the respective items.

Methodology

Basically it is a mail enquiry. The respondents are the factory owners or the factory management (i.e. Accountants, Finance Manager, and Mill Manager etc.) The blank questionnaires of various industries are used to be mailed out to the factories for their use for the supply of the required information every month. About 60% to 70% questionnaires are received through mail. While the remaining non-responding industrial units are visited by the officers/officials of this Bureau during the third week of the following month for collection of requisite information.

Editing

The received questionnaires are statistically examined for the accuracy and consistency by comparing the production and employment levels of the current month with previous month and same month of the last year. The information of the factories which could not be collected during the month due to the absence of the concerned person or due to other reason is estimated on the basis of the last months' average production or the last month information is repeated.

Tabulation

The information collected is tabulated on working sheets prepared for this purpose and also on computer for each industry/factory. Seven tables are prepared every month on production, total employment and production workers as well as comparisons are made with respect to last month, with same month of the last year and among current & previous financial years.

General index / Quantum Index of Manufacturing (QIM)

At present Punjab Bureau of Statistics is computing Index on Industrial Production using 2005-06 as base year. Index series is given in this report by using Laspayer's Index since 2006-07.

This Bureau initially prepared Index Series using 1970-71 as base year. Later on the base year was shifted to 1980-81 & then in October 2011 the base year was sifted to 2005-06. Majority of some new items are included in the new index series due to their relative weight and some items were discarded due to their negligible weights.

Formula of Quantum Index

$$QIM = \frac{\sum_{i=1}^n \frac{q_{im}}{q_{io}} w_i}{\sum_{i=1}^n w_i} \times 100$$

q_{im} = Production of i^{th} item during the current month

q_{io} = Average Production of the same i^{th} item in the base period (2005-06).

w_i = Weight of the i^{th} item in the base year (2005-06).

$\sum w_i$ = total weight of 46 large scale industries in the base period with respect to the total value added of all the industries covered in CMI in the base year (2005-06).

Final Product

Final product is a CIS report that contains QIM series, analytical note on the performance of Industrial Sector in the province, seven tables, and detailed performance report of some important industries as well.

User Agencies

- i. Ministry of Industries & Production, Government of the Pakistan, Islamabad.
- ii. Pakistan Bureau of Statistics, Government of Pakistan, Islamabad.
- iii. Provincial Bureaus of Statistics, Government of Sindh, KPK and Baluchistan.
- iv. Planning & Development Department, Government of the Punjab.
- v. Punjab Economic Research Institute (PERI).
- vi. Department of Commerce & Industry, Government of the Punjab.
- vii. State Bank of Pakistan

IMPORTANT DEFINITIONS

Factory

An entity where manufacturing process is carried out on any day of the preceding thirty days and in any part of which manufacturing process is being carried on with or without the aid of power or through chemical process. It does not include the Mine subject which comes under the operation of Mines Act 1923.

Large Scale Manufacturing Industries

Establishments where ten or more employees are working are classified as large scale industry.

Employment

This item include all full time and part time employees on the payrolls of operating manufacturing establishment during any part of the pay period of the month specified on the questionnaire. It should include all the employees on paid sick leave paid holidays, and paid vacations. Proprietors and partners of unincorporated business may not be included.

Production Workers

The “Production Workers” includes workers (up through the line-supervisor level) engaged in fabricating, processing, assembling, inspecting, receiving, storing, handling, packing, warehousing, shipping (but no delivering), maintenance, repair, product development, auxiliary production for plant’s own use (e.g., power plant). Record keeping and other services closely associated with these production operations at the establishment covered by the report.

Non-Production Workers

The employees those are not involved directly in the manufacturing process are called non-production workers. E.g. Managers, Assistants, Clerks, Drivers, Peons, Malies and Chowkidars etc.

Employment Cost

Wages and salaries of all employees including production and non-production workers is called employment cost.

TABLE 1: GENERAL INDEX OF INDUSTRIAL PRODUCTION
FOR THE PERIOD JULY 2016 – SEPTEMBER 2022
(2005-06=100)

MONTH/ YEAR	2016 - 17	2017 - 18	2018 - 19	2019 - 20	2020 - 21	2021 - 22	2022 - 23
JUL:	144.9	152.5	156.5	155.5	160.2	171.1	161.6
AUG:	150.8	154.7	154.3	152.8	155.2	171.8	165.9
SEP:	144.4	152.9	158.1	159.3	169.3	171.0	170.9
OCT:	148.9	160.1	168.7	171.7	176.5	177.6	
NOV:	157.6	153.1	160.6	167.8	179.5	185.1	
DEC:	186.9	178.1	168.7	182.2	216.6	213.2	
JAN:	188.4	213.9	210.3	202.2	208.5	220.5	
FEB:	183.2	222.1	198.9	203.5	207.4	225.1	
MAR:	193.3	245.0	251.9	186.9	213.6	217.8	
APR:	171.5	186.5	197.9	140.0	188.4	183.9	
MAY:	158.6	168.2	175.3	140.0	179.3	172.3	
JUN:	150.6	161.9	160.0	146.3	172.3	181.3	
Average*	164.0	176.8	178.1	166.0	184.5	189.8	166.1

* = Geometric Mean

Fig. 1 **Graph of Quantum Index of Manufacturing Industries.**

(2005-06=100)



Figure: Graph of QIM for the period of July 2016 to September 2022

ANALYTICAL ANALYSIS

INDUSTRIAL PRODUCTION AND EMPLOYMENT (September 2022)

Coverage

This report covers 2041 industrial units pertaining to large scale industries which contribute about 72 percent of the total value added of Large-Scale Manufacturing sector in the Punjab.

Industrial Production Index

Industrial Production Index for the month of September-2022 stood at 170.9 against 165.9 and 171.0 as compared to August-2022 and September-2021 respectively. Index Series since July-2016 is given in Table-1 on previous page.

Production September 2022 VS August 2022 (Table-2)

Overall production during the month of September-2022 was 3.0 percent higher than August-2022.

The production was lower in case of Dairy Products (6.3%), Soft Drinks & Juices (12.9%), Tractors (19.2%), Automobiles Cars/Trucks (22.8%), Electric Fans (17.1%), Electric Motors (7.7%), Air-Conditioners (30.0%) and Refrigerators/Deep Freezers (12.5%).

The production was higher in case of Wheat Milling (5.9%), Cigarettes (5.9%), Ply Wood (6.1%), Pharmaceuticals (11.3%), Fertilizers (13.7%), Petroleum Products (5.3%), Glass Sheet (12.3%), Cement (28.0%) and Fabricated Metal Products/HMC (8.8%).

Production September 2022 VS September 2021 (Table-3)

Overall production during September-2022 was 0.1 percent lower than September-2021.

The production was lower in case of Wheat Milling (8.2%), Cigarettes (51.2%), Paper & Paper Board (6.8%), Petroleum Products (10.3%), Fabricated Metal Products/HMC (54.9%), Tractors (24.5%), Automobile Cars/Trucks (61.5%), Motor Cycles (27.1%), Electric Fans (18.3%), Electric Motors (15.0%), Air-Conditioners (44.7%), Refrigerators/Deep Freezers (35.4%), Safety Razor Blades (19.6%) and Agricultural Implements (14.0%).

The production was higher in case of Vegetable Ghee/Cooking Oil (8.9%), Woollen Textiles (17.9%), Jute Textiles (9.7%), Upper Leather (9.1%), Footwear (5.6%), Ply Wood (7.2%), Basic Inorganic Chemicals/Acids (9.1%), Fertilizers (8.8%), Paints & Varnishes (12.6%), Synthetic Fibre (14.6%), Glass Sheet (139.5%), Diesel Engines (68.2%), Bicycles (13.8%) and Electric Meters (108.6%).

Production July-September 2022-23 VS July-September 2021-22 (Table-4)

Overall production during July-September (2022-23) was 3.0 percent lower than July-September (2021-22).

The Production was lower in case of Wheat Milling (14.6%), Cigarettes (42.4%), Petroleum Products (16.5%), Cement (17.1%), Fabricated Metal Products/HMC (45.9%), Automobiles Cars/Trucks (48.3%), Motor Cycles (24.1%), Electric Fans (15.9%), Electric Motors (20.4%), Air-Conditioners (35.7%), Refrigerators/Deep Freezers (38.5%), Safety Razor Blades (17.2%) and Agricultural Implements (11.3%).

The production was higher in case of Vegetable Ghee/Cooking Oil (9.3%), Starch & its Products (9.0%), Woolen Textiles (6.6%), Jute Textiles (30.1%), Upper Leather (18.0%), Footwear (14.2%), Ply Wood (9.9%), Basic Inorganic Chemicals/Acids (15.5%), Paints & Varnishes (10.3%), Synthetic Fibre (14.7%), Glass Sheets (132.5%), Diesel Engines (73.5%), Bicycles (20.0%) and Electric Meters (47.3%).

Employment September 2022 VS August 2022 and September 2021 (Table-5)

Total employment during September 2022 was 0.3 and 0.2 percent lower than August 2022 and September 2021 respectively.

Average Employment July-September 2022-23 VS July-September 2021-22 (Table-7)

Average monthly employment during the period of July-September (2022-23) was 0.5 percent higher than the corresponding period of the previous year.

Table 2: Production Volume of Selected Items Pertaining to Large-Scale Manufacturing Sector, September 2022 VS August 2022

Group/Items		No. of Units Covered in Sep: 2022	Weight with 2005-06 base	Unit of Quantity	Production		Index of Production in Sep: 2022 with Aug: 2022
					Sep: 2022	Aug: 2022	
I	Food Drinks & Tobacco	910					
1	Vegetable Ghee/Cooking Oil	44	5.00	M.Tons	90942	90085	101.0
	i) Vegetable Ghee	44		M.Tons	74112	73360	101.0
	ii) Cooking Oil	18		M.Tons	16830	16725	100.6
2	Dairy Products	8	4.13				93.7
	i) Process/UHT Milk		1.62	`000` Litres	40124	40124	100.0
	ii) Milk Powder		0.87	M.Tons	1065	1065	100.0
	iii) Chees		0.01	M.Tons	510	510	100.0
	iv) Butter/ Desi Ghee		0.33	M.Tons	358	358	100.0
	v) Cream		1.04	M.Tons	605	605	100.0
	vi) Yoghurt		0.26	M.Tons	0	0	
3	Wheat Milling	776	1.25	M.Tons	846948	799995	105.9
4	Sugar	44	3.77	M.Tons	0	0	
5	Tea (Blended)	3	0.03	M.Tons	6835	6589	103.7
6	Starch & its Products	2	0.56	M.Tons	35397	36562	96.8
	i) Starch			M.Tons	21557	22522	95.7
	ii) Glucose			M.Tons	13840	14040	98.6
7	Soft Drinks & Juices	30	0.82	`000` Litres	207659	238397	87.1
	i) 7-up Coca Cola etc.	19		`000` Litres	185552	214578	86.5
	ii) Fruit Juices	19		`000` Litres	21348	22130	96.5
	iii) Syrups & Squashes	2		`000` Litres	759	1689	44.9
8	Cigarettes	3	0.59	M. Nos	1425	1346	105.9
II	Textiles	312					
1	Cotton Textiles	285					
	i) Cotton/M. M Blended Yarn	247	15.40	M.Tons	138415	138304	100.1
	ii) Cloth/M. M Blended Cloth	48	10.20	000 Mtrs.	66375	66695	99.5
2	Woolen Textiles	21	0.52	M.Tons	658	650	101.2
	i) Woolen Yarn	14		M.Tons	642	634	101.3
	ii) Knitting Wool	3		M.Tons	0	0	
	iii) Woolen & Worsted Cloth	14		M.Tons	16	16	100.0
	iv) Carpets	5	0.77	000 Mtrs.	0	0	
3	Jute Textiles	6	0.28	M.Tons	4494	4494	100.0
	i) Jute Sacking				2920	2920	100.0
	ii) Jute Hessian				1146	1146	100.0
	iii) Jute Twine				428	428	100.0
III	Leather Rubber & Plastic Products	147					
1	Leather Tanning	106					
	i) Upper Leather	95	0.49	000 Sq. Mtrs.	812	807	100.6
	ii) Sole Leather	11		M.Tons	16	16	100.0
2	Footwear	41	0.90	000 Pairs	2509	2601	96.5
IV	Ply Wood	6	0.44	000 Sq. Feet	629	593	106.1
V	Paper & Paper Board	47	4.19	M.Tons	58682	57690	101.7
1	Paper				18570	17928	103.6
	i) Writing			M.Tons	7251	6695	108.3
	ii) Printing			M.Tons	5830	5980	97.5
	iii) Packing & Others			M.Tons	5489	5253	104.5
2	Paper Board			M.Tons	40112	39762	100.9
VI	Chemical & Petroleum Products	139					
1	Pharmaceuticals	36	1.15				111.3
	i) Tablets	28	0.38	000 Nos.	276502	218500	126.5
	ii) Liquids (Syrups & Drops)	27	0.48	000 Ltrs.	1381	1372	100.7
	iii) Capsules	19	0.08	000 Nos.	45875	44558	103.0
	iv) Injections	12	0.14	000 Nos.	16197	16573	97.7
	v) Ointments	7	0.03	Kgs.	60590	59955	101.1
	vi) Galenicals	6	0.04	000 Ltrs.	5	3	166.7
2	Basic Inorganic Chemicals/Acids	8	1.34		113124	118410	95.5
	i) Caustic Soda	2		M.Tons	20900	21416	97.6
	ii) Hydrochloric Acid	2		M.Tons	43577	47834	91.1
	iii) Chlorine Liquids	2		M.Tons	1566	1704	91.9
	iv) Soda Ash	2		M.Tons	44858	45198	99.2
	v) Sulphuric Acid	5		M.Tons	2223	2258	98.4

Group/Items	No. of Units Covered in Sep: 2022	Weight with 2005-06 base	Unit of Quantity	Production		Index of Production in Sep: 2022 with Aug: 2022
				Sep: 2022	Aug: 2022	
3 Fertilizers	7	7.18	M.Tons	437882	385162	113.7
i) Urea	4		M.Tons	292779	248817	117.7
ii) Amm. Nitrate	1		M.Tons	71617	65792	108.9
iii) Amm. Sulphate	0		M.Tons	0	0	
iv) Super Phosphate	1		M.Tons	419	378	110.8
v) Nitro Phosphate	1		M.Tons	73067	70175	104.1
4 Paints & Varnishes	12	0.65		9705	9932	97.7
i) Paints		0.01	M.Tons	6963	7192	96.8
			`000` Litres	2713	2711	100.1
ii) Varnishes		1.04	M.Tons	16	16	100.0
		0.26	`000` Litres	13	13	100.0
5 Tyres & Tubes	6	0.12	`000` Nos.	3218	3225	99.8
i) Cycle Tyres				333	336	99.1
ii) Automobile Tyres				428	432	99.1
iii) Cycle Tubes				617	611	101.0
iv) Automobile Tubes				1840	1846	99.7
6 Soap	62	0.07	M.Tons	22287	22150	100.6
i) Toilet Soap	7			3540	3618	97.8
ii) Washing Soap	62			18747	18532	101.2
7 Matches	2	0.00	M. Box * 40 Sticks	473	459	103.1
8 Synthetic Fibre	4	0.95	M.Tons	46074	44490	103.6
9 Petroleum Products	2	0.99	`000` Litres	533628	506584	105.3
i) Petrol (LPG)			`000` Litres	14821	13996	105.9
ii) J.P.			`000` Litres	29895	35949	83.2
iii) White Kerosene			`000` Litres	16689	17869	93.4
iv) H.S. Diesel			`000` Litres	214237	203228	105.4
v) Diesel Fuel			`000` Litres	0	3078	
vi) Furnace Fuel			`000` Litres	123071	110290	111.6
vii) Solvent Oil			`000` Litres	0	0	
viii) Lubricating Oil			`000` Litres	0	0	
ix) Bitumen 80/100			`000` Litres	5591	4943	113.1
x) Blown Bitumen Products			`000` Litres	0	0	
xi) Premium M.G.			`000` Litres	129324	117231	110.3
xii) Naphtha			`000` Litres	0	0	
VII Non-Metalic & Mineral	21					
1 Glass Sheets	9	0.19	M.Tons	23121	20582	112.3
2 Cement	12	3.91	M.Tons	2052463	1603861	128.0
VIII Engineering Products	459					
1 Steel Bars/ Angles	41	1.06	M.Tons	25017	24411	102.5
2 Fabricated Metal Products/HMC	1	0.53	M.Tons	37	34	108.8
3 Tractors	4	0.86	Nos.	2400	2970	80.8
4 Automobiles Cars/Trucks	1	1.65	Nos.	747	967	77.2
5 Diesel Engines	15	0.06	Nos.	217	210	103.3
6 Motor Cycles	17	0.13	Nos.	109017	111480	97.8
7 Bicycles	3	0.15	Nos.	12519	13000	96.3
8 Electric Fans	126	0.11	Nos.	174917	211119	82.9
i) Ceiling				102143	114222	89.4
ii) Pedestal				35914	40414	88.9
iii) Others				36860	56483	65.3
9 Electric Transformers	3	0.00	Nos.	3817	3631	105.1
10 Electric Motors	30	0.52	Nos.	1621	1757	92.3
11 Switch Gears	3	0.01	Nos.	920	1058	87.0
12 Washing Machines	20	0.00	Nos.	31146	34144	91.2
13 Electric Meters	4	0.19	Nos.	184414	182837	100.9
14 Air-Conditioners	5	0.14	Nos.	8917	12733	70.0
15 Refrigerators/Deep Freezers	5	0.31	Nos.	40485	46249	87.5
16 Safety Razor Blades	1	0.14	Mill. Nos.	82	85	96.5
17 Agricultural Implements	151	0.38	Nos.	1215	1193	101.8
i) Chaff Cutter	54			798	784	101.8
ii) Sugarcane Machines	35			4	4	100.0
iii) Wheat Thrashers	30			3	3	100.0
iv) Others (Misc. Imp.)	43			410	402	102.0
18 Textiles Machinery	29	0.01		40	42	95.2
i) Power Looms	20		Nos.	36	38	94.7
ii) Bobbins	5		000 Nos.	0	0	
iii) Shuttles	6		000 Nos.	4	4	100.0
General Index	2041	72.14		170.9	165.9	103.0

Table 3: Production Volume of Selected Items Pertaining to Large-Scale Manufacturing Sector, September 2022 VS September 2021

Group/Items		No. of Units Covered in Sep: 2022	Weight with 2005-06 base	Unit of Quantity	Production		Index of Production in Sep: 2022 with Sep: 2021
					Sep: 2022	Sep: 2021	
I	Food Drinks & Tobacco	910					
1	Vegetable Ghee/Cooking Oil	44	5.00	M.Tons	90942	83524	108.9
	i) Vegetable Ghee	44		M.Tons	74112	68323	108.5
	ii) Cooking Oil	18		M.Tons	16830	15201	110.7
2	Dairy Products	8	4.13				104.5
	i) Process/UHT Milk		1.62	`000` Litres	40124	46731	85.9
	ii) Milk Powder		0.87	M.Tons	1065	714	149.2
	iii) Chees		0.01	M.Tons	510	577	88.4
	iv) Butter/ Desi Ghee		0.33	M.Tons	358	184	194.6
	v) Cream		1.04	M.Tons	605	644	93.9
	vi) Yoghurt		0.26	M.Tons	0	0	
3	Wheat Milling	776	1.25	M.Tons	846948	922958	91.8
4	Sugar	44	3.77	M.Tons	0	0	
5	Tea (Blended)	3	0.03	M.Tons	6835	7410	92.2
6	Starch & its Products	2	0.56	M.Tons	35397	35094	100.9
	i) Starch			M.Tons	21557	21204	101.7
	ii) Glucose			M.Tons	13840	13890	99.6
7	Soft Drinks & Juices	30	0.82	`000` Litres	207659	202549	102.5
	i) 7-up Coca Cola etc.	19		`000` Litres	185552	180057	103.1
	ii) Fruit Juices	19		`000` Litres	21348	21597	98.8
	iii) Syrups & Squashes	2		`000` Litres	759	895	84.8
8	Cigarettes	3	0.59	M. Nos	1425	2918	48.8
II	Textiles	312					
1	Cotton Textiles	285					
	i) Cotton/M. M Blended Yarn	247	15.40	M.Tons	138415	135995	101.8
	ii) Cloth/M. M Blended Cloth	48	10.20	000 Mtrs.	66375	65768	100.9
2	Woolen Textiles	21	0.52	M.Tons	658	558	117.9
	i) Woolen Yarn	14		M.Tons	642	540	118.9
	ii) Knitting Wool			M.Tons	0	0	
	iii) Woolen & Worsted Cloth	14		M.Tons	16	18	88.9
	iv) Carpets	5	0.77	000 Mtrs.	0	0	
3	Jute Textiles	6	0.28	M.Tons	4494	4098	109.7
	i) Jute Sacking				2920	2353	124.1
	ii) Jute Hessian				1146	1078	106.3
	iii) Jute Twine				428	667	64.2
III	Leather Rubber & Plastic Products	147					
1	Leather Tanning	106					
	i) Upper Leather	95	0.49	000 Sq. Mtrs.	812	744	109.1
	ii) Sole Leather	11		M.Tons	16	14	114.3
2	Footwear	41	0.90	000 Pairs	2509	2376	105.6
IV	Ply Wood	6	0.44	000 Sq. Feet	629	587	107.2
V	Paper & Paper Board	47	4.19	M.Tons	58682	62957	93.2
1	Paper				18570	17979	103.3
	i) Writing			M.Tons	7251	8193	88.5
	ii) Printing			M.Tons	5830	4692	124.3
	iii) Packing & Others			M.Tons	5489	5094	107.8
2	Paper Board			M.Tons	40112	44978	89.2
VI	Chemical & Petroleum Products	139					
1	Pharmaceuticals	36	1.15				101.9
	i) Tablets	28	0.38	000 Nos.	276502	318031	86.9
	ii) Liquids (Syrups & Drops)	27	0.48	000 Ltrs.	1381	1463	94.4
	iii) Capsules	19	0.08	000 Nos.	45875	41783	109.8
	iv) Injections	12	0.14	000 Nos.	16197	9733	166.4
	v) Ointments	7	0.03	Kgs.	60590	53293	113.7
	vi) Galenicals	6	0.04	000 Ltrs.	5	6	83.3
2	Basic Inorganic Chemicals/Acids	8	1.34		113124	103727	109.1
	i) Caustic Soda	2		M.Tons	20900	17998	116.1
	ii) Hydrochloric Acid	2		M.Tons	43577	31161	139.8
	iii) Chlorine Liquids	2		M.Tons	1566	1642	95.4
	iv) Soda Ash	2		M.Tons	44858	44420	101.0
	v) Sulphuric Acid	5		M.Tons	2223	8506	26.1

Group/Items	No. of Units Covered in Sep: 2022	Weight with 2005-06 base	Unit of Quantity	Production		Index of Production in Sep: 2022 with Sep: 2021
				Sep: 2022	Sep: 2021	
3 Fertilizers	7	7.18	M.Tons	437882	402381	108.8
i) Urea	4		M.Tons	292779	268983	108.8
ii) Amm. Nitrate	1		M.Tons	71617	62255	115.0
iii) Amm. Sulphate	0		M.Tons	0	0	
iv) Super Phosphate	1		M.Tons	419	2552	16.4
v) Nitro Phosphate	1		M.Tons	73067	68591	106.5
4 Paints & Varnishes	12	0.65		9705	8621	112.6
i) Paints		0.01	M.Tons	6963	5850	119.0
			`000` Litres	2713	2744	98.9
ii) Varnishes		1.04	M.Tons	16	10	160.0
		0.26	`000` Litres	13	17	76.5
5 Tyres & Tubes	6	0.12	`000` Nos.	3218	3135	102.6
i) Cycle Tyres				333	308	108.1
ii) Automobile Tyres				428	421	101.7
iii) Cycle Tubes				617	571	108.1
iv) Automobile Tubes				1840	1835	100.3
6 Soap	62	0.07	M.Tons	22287	22272	100.1
i) Toilet Soap	7			3540	3697	95.8
ii) Washing Soap	62			18747	18575	100.9
7 Matches	2	0.00	M. Box * 40 Sticks	473	386	122.5
8 Synthetic Fibre	4	0.95	M.Tons	46074	40204	114.6
9 Petroleum Products	2	0.99	`000` Litres	533628	595188	89.7
i) Petrol (LPG)			`000` Litres	14821	15469	95.8
ii) J.P.			`000` Litres	29895	28062	106.5
iii) White Kerosene			`000` Litres	16689	7326	227.8
iv) H.S. Diesel			`000` Litres	214237	250385	85.6
v) Diesel Fuel			`000` Litres	0	896	
vi) Furnace Fuel			`000` Litres	123071	121739	101.1
vii) Solvent Oil			`000` Litres	0	0	
viii) Lubricating Oil			`000` Litres	0	0	
ix) Bitumen 80/100			`000` Litres	5591	6432	86.9
x) Blown Bitumen Products			`000` Litres	0	0	
xi) Premium M.G.			`000` Litres	129324	164879	78.4
xii) Naphtha			`000` Litres	0	0	
VII Non-Metalic & Mineral	21					
1 Glass Sheets	9	0.19	M.Tons	23121	9654	239.5
2 Cement	12	3.91	M.Tons	2052463	2094744	98.0
VIII Engineering Products	459					
1 Steel Bars/ Angles	41	1.06	M.Tons	25017	25191	99.3
2 Fabricated Metal Products/HMC	1	0.53	M.Tons	37	82	45.1
3 Tractors	4	0.86	Nos.	2400	3180	75.5
4 Automobiles Cars/Trucks	1	1.65	Nos.	747	1940	38.5
5 Diesel Engines	15	0.06	Nos.	217	129	168.2
6 Motor Cycles	17	0.13	Nos.	109017	149469	72.9
7 Bicycles	3	0.15	Nos.	12519	11000	113.8
8 Electric Fans	126	0.11	Nos.	174917	214096	81.7
i) Ceiling				102143	126116	81.0
ii) Pedestal				35914	34114	105.3
iii) Others				36860	53866	68.4
9 Electric Transformers	3	0.00	Nos.	3817	2085	183.1
10 Electric Motors	30	0.52	Nos.	1621	1906	85.0
11 Switch Gears	3	0.01	Nos.	920	1166	78.9
12 Washing Machines	20	0.00	Nos.	31146	50015	62.3
13 Electric Meters	4	0.19	Nos.	184414	88426	208.6
14 Air-Conditioners	5	0.14	Nos.	8917	16124	55.3
15 Refrigerators/Deep Freezers	5	0.31	Nos.	40485	62623	64.6
16 Safety Razor Blades	1	0.14	Mill. Nos.	82	102	80.4
17 Agricultural Implements	151	0.38	Nos.	1215	1413	86.0
i) Chaff Cutter	54			798	910	87.7
ii) Sugarcane Machines	35			4	5	80.0
iii) Wheat Thrashers	30			3	2	150.0
iv) Others (Misc. Imp.)	43			410	496	
18 Textiles Machinery	29	0.01		40	43	93.0
i) Power Looms	20		Nos.	36	39	92.3
ii) Bobbins	5		000 Nos.	0	0	
iii) Shuttles	6		000 Nos.	4	4	100.0
General Index	2041	72.14		170.9	171.0	99.9

Table 4: Production Volume of Selected Items Pertaining to Large-Scale Manufacturing Sector, 2022-23 (Jul-Sep:) VS 2021-22 (Jul-Sep:)

Group/Items	No. of Units Covered in Sep: 2022	Weight with 2005-06 base	Unit of Quantity	Production		Index of Production in 2022-23 (Jul-Sep:) with 2021-22 (Jul-Sep:)=100
				2022-23 (Jul-Sep:)	2021-22 (Jul-Sep:)	
I Food Drinks & Tobacco	910					
1 Vegetable Ghee/Cooking Oil	44	5.00	M.Tons	268423	245657	109.3
i) Vegetable Ghee	44		M.Tons	218832	200892	108.9
ii) Cooking Oil	18		M.Tons	49591	44765	110.8
2 Dairy Products	8	4.13				97.8
i) Process/UHT Milk		1.62	`000` Litres	120884	139853	86.4
ii) Milk Powder		0.87	M.Tons	2898	2218	130.7
iii) Chees		0.01	M.Tons	1498	1725	86.8
iv) Butter/ Desi Ghee		0.33	M.Tons	1118	542	206.3
v) Cream		1.04	M.Tons	1699	2174	78.2
vi) Yoghurt		0.26	M.Tons	0	0	
3 Wheat Milling	776	1.25	M.Tons	2377689	2784812	85.4
4 Sugar	44	3.77	M.Tons	0	0	
5 Tea (Blended)	3	0.03	M.Tons	18358	18447	99.5
6 Starch & its Products	2	0.56	M.Tons	107803	98901	109.0
i) Starch			M.Tons	65851	58732	112.1
ii) Glucose			M.Tons	41952	40169	104.4
7 Soft Drinks & Juices	30	0.82	`000` Litres	727291	726805	100.1
i) 7-up Coca Cola etc.	19		`000` Litres	654156	655053	99.9
ii) Fruit Juices	19		`000` Litres	69940	67628	103.4
iii) Syrups & Squashes	2		`000` Litres	3195	4124	77.5
8 Cigarettes	3	0.59	M. Nos	3773	6552	57.6
II Textiles	312					
1 Cotton Textiles	285					
i) Cotton/M. M Blended Yarn	247	15.40	M.Tons	415178	410926	101.0
ii) Cloth/M. M Blended Cloth	48	10.20	000 Mtrs.	199850	195032	102.5
2 Woolen Textiles	21	0.52	M.Tons	1979	1857	106.6
i) Woolen Yarn	14		M.Tons	1938	1771	109.4
ii) Knitting Wool			M.Tons	0	27	
iii) Woolen & Worsted Cloth	14		M.Tons	41	59	69.5
iv) Carpets	5	0.77	000 Mtrs.	0	0	
3 Jute Textiles	6	0.28	M.Tons	13067	10042	130.1
i) Jute Sacking				8747	6077	143.9
ii) Jute Hessian				3171	2597	122.1
iii) Jute Twine				1149	1368	84.0
III Leather Rubber & Plastic Products	147					
1 Leather Tanning	106					
i) Upper Leather	95	0.49	000 Sq. Mtrs.	2486	2106	118.0
ii) Sole Leather	11		M.Tons	48	42	114.3
2 Footwear	41	0.90	000 Pairs	8074	7068	114.2
IV Ply Wood	6	0.44	000 Sq. Feet	1859	1692	109.9
V Paper & Paper Board	47	4.19	M.Tons	172478	176688	97.6
1 Paper				53979	49511	109.0
i) Writing			M.Tons	20355	23386	87.0
ii) Printing			M.Tons	17822	11799	151.0
iii) Packing & Others			M.Tons	15802	14326	110.3
2 Paper Board			M.Tons	118499	127177	93.2
VI Chemical & Petroleum Products	139					
1 Pharmaceuticals	36	1.15				99.9
i) Tablets	28	0.38	000 Nos.	723999	824131	87.8
ii) Liquids (Syrups & Drops)	27	0.48	000 Ltrs.	3899	4103	95.0
iii) Capsules	19	0.08	000 Nos.	131009	117413	111.6
iv) Injections	12	0.14	000 Nos.	49541	33634	147.3
v) Ointments	7	0.03	Kgs.	174490	149405	116.8
vi) Galenicals	6	0.04	000 Ltrs.	10	14	71.4
2 Basic Inorganic Chemicals/Acids	8	1.34		351686	304455	115.5
i) Caustic Soda	2		M.Tons	65439	53849	121.5
ii) Hydrochloric Acid	2		M.Tons	141308	94760	149.1
iii) Chlorine Liquids	2		M.Tons	5264	4498	117.0
iv) Soda Ash	2		M.Tons	131936	129389	102.0
v) Sulphuric Acid	5		M.Tons	7739	21959	35.2

Group/Items	No. of Units Covered in Sep: 2022	Weight with 2005-06 base	Unit of Quantity	Production		Index of Production in 2022-23 (Jul-Sep:) with 2021-22 (Jul-Sep:)=100
				2022-23 (Jul-Sep:)	2021-22 (Jul-Sep:)	
3 Fertilizers	7	7.18	M.Tons	1199138	1226890	97.7
i) Urea	4		M.Tons	768909	797460	96.4
ii) Amm. Nitrate	1		M.Tons	211733	198772	106.5
iii) Amm. Sulphate	0		M.Tons	0	0	
iv) Super Phosphate	1		M.Tons	2539	9282	27.4
v) Nitro Phosphate	1		M.Tons	215957	221376	97.6
4 Paints & Varnishes	12	0.65		29342	26609	110.3
i) Paints		0.01	M.Tons	21118	18439	114.5
			`000` Litres	8137	8081	100.7
ii) Varnishes		1.04	M.Tons	48	32	150.0
		0.26	`000` Litres	39	57	68.4
5 Tyres & Tubes	6	0.12	`000` Nos.	9654	9364	103.1
i) Cycle Tyres				1001	912	109.8
ii) Automobile Tyres				1291	1259	102.5
iii) Cycle Tubes				1831	1692	108.2
iv) Automobile Tubes				5531	5501	100.5
6 Soap	62	0.07	M.Tons	66097	66867	98.8
i) Toilet Soap	7			10714	11153	96.1
ii) Washing Soap	62			55383	55714	99.4
7 Matches	2	0.00	M. Box * 40 Sticks	1467	1117	131.3
8 Synthetic Fibre	4	0.95	M.Tons	146006	127250	114.7
9 Petroleum Products	2	0.99	`000` Litres	1498786	1795812	83.5
i) Petrol (LPG)			`000` Litres	42948	45912	93.5
ii) J.P.			`000` Litres	95604	80877	118.2
iii) White Kerosene			`000` Litres	39707	20094	197.6
iv) H.S. Diesel			`000` Litres	567653	747780	75.9
v) Diesel Fuel			`000` Litres	3382	2444	138.4
vi) Furnace Fuel			`000` Litres	333643	371305	89.9
vii) Solvent Oil			`000` Litres	0	0	
viii) Lubricating Oil			`000` Litres	0	0	
ix) Bitumen 80/100			`000` Litres	15427	20653	74.7
x) Blown Bitumen Products			`000` Litres	0	0	
xi) Premium M.G.			`000` Litres	400422	506747	79.0
xii) Naphtha			`000` Litres	0	0	
VII Non-Metalic & Mineral	21					
1 Glass Sheets	9	0.19	M.Tons	67127	28875	232.5
2 Cement	12	3.91	M.Tons	4945006	5965810	82.9
VIII Engineering Products	459					
1 Steel Bars/ Angles	41	1.06	M.Tons	73851	76624	96.4
2 Fabricated Metal Products/HMC	1	0.53	M.Tons	106	196	54.1
3 Tractors	4	0.86	Nos.	9379	9502	98.7
4 Automobiles Cars/Trucks	1	1.65	Nos.	2914	5640	51.7
5 Diesel Engines	15	0.06	Nos.	647	373	173.5
6 Motor Cycles	17	0.13	Nos.	328865	433128	75.9
7 Bicycles	3	0.15	Nos.	38526	32100	120.0
8 Electric Fans	126	0.11	Nos.	647180	769626	84.1
i) Ceiling				354784	415448	85.4
ii) Pedestal				121782	125477	97.1
iii) Others				170614	228701	74.6
9 Electric Transformers	3	0.00	Nos.	10816	5875	184.1
10 Electric Motors	30	0.52	Nos.	5180	6507	79.6
11 Switch Gears	3	0.01	Nos.	2910	2753	105.7
12 Washing Machines	20	0.00	Nos.	99079	143646	69.0
13 Electric Meters	4	0.19	Nos.	540171	366766	147.3
14 Air-Conditioners	5	0.14	Nos.	50973	79324	64.3
15 Refrigerators/Deep Freezers	5	0.31	Nos.	141886	230692	61.5
16 Safety Razor Blades	1	0.14	Mill. Nos.	251	303	82.8
17 Agricultural Implements	151	0.38	Nos.	3645	4111	88.7
i) Chaff Cutter	54			2385	2695	88.5
ii) Sugarcane Machines	35			13	16	81.3
iii) Wheat Thrashers	30			8	25	32.0
iv) Others (Misc. Imp.)	43			1239	1375	90.1
18 Textiles Machinery	29	0.01		125	126	99.2
i) Power Looms	20		Nos.	113	114	99.1
ii) Bobbins	5		000 Nos.	0	0	
iii) Shuttles	6		000 Nos.	12	12	100.0
General Index*	2041	72.14		166.1	171.3	97.0

* Average Index of three months.

Table 5: Total Employment Regarding Large-Scale Industries, August-2022, September-2022 and September-2021

Groups/Items		No. of Units Covered in Sep: 2022	Aug: 2022	Sep: 2022	Sep: 2021	Index of Employment	
						Sep: 2022 with Aug: 2022	Sep: 2022 with Sep: 2021
I	Food Drinks & Tobacco	910					
1	Vegetable Ghee/Cooking Oil	44	5359	5371	5204	100.2	103.2
2	Dairy Products	8	2015	2015	2642	100.0	76.3
3	Wheat Milling	776	10117	10096	10001	99.8	100.9
4	Sugar	44	18225	18125	21705	99.5	83.5
5	Tea (Blended)	3	1354	1366	1377	100.9	99.2
6	Starch & its Products	2	1843	1840	1916	99.8	96.0
7	Soft Drinks & Juices	30	8384	8203	8263	97.8	99.3
8	Cigarettes	3	639	643	658	100.6	97.7
II	Textiles	313					
1	Cotton Textiles	285	159579	159251	155803	99.8	102.2
2	Woolen Textiles	21	913	915	1125	100.2	81.3
3	Jute Textiles	7	5139	5139	4366	100.0	117.7
III	Leather Rubber & Plastic Products	147					
1	Leather Tanning	106	2215	2215	2417	100.0	91.6
2	Footwear	41	12235	12014	11642	98.2	103.2
IV	Plywood	6	88	90	86	102.3	104.7
V	Paper & Paper Board	47					
1	Paper & Paper Board	47	5090	5090	5024	100.0	101.3
VI	Chemicals & Petroleum Products	139					
1	Pharmaceuticals	36	8043	8060	8073	100.2	99.8
2	Basic Inorganic Chemicals	8	2223	2224	2666	100.0	83.4
3	Fertilizers	7	5534	5541	5529	100.1	100.2
4	Paints & Varnishes	12	2358	2354	2298	99.8	102.4
5	Tyres & Tubes	6	1339	1330	1309	99.3	101.6
6	Soap	62	2831	2805	2877	99.1	97.5
7	Matches	2	491	491	454	100.0	108.1
8	Synthetic Fibre	4	1775	1776	1776	100.1	100.0
9	Petroleum Products	2	980	980	975	100.0	100.5
VII	Non-Metallic & Mineral Products	21					
1	Glass Sheets	9	1147	1148	613	100.1	187.3
2	Cement	12	7426	7426	8117	100.0	91.5
VIII	Engineering Products	458					
1	Steel Bars/ Angles	40	1067	1097	1086	102.8	101.0
2	Fabricated Metal Products/HMC	1	16	16	17	100.0	94.1
3	Tractors	4	500	500	500	100.0	100.0
4	Automobile Cars/Trucks	1	1000	900	1150	90.0	78.3
5	Diesel Engines	15	24	24	21	100.0	114.3
6	Motor Cycles	17	3310	3294	3158	99.5	104.3
7	Bicycles	3	686	686	686	100.0	100.0
8	Electric Fans	126	2188	2144	2141	98.0	100.1
9	Electric Transformers	3	2680	2680	2680	100.0	100.0
10	Electric Motors	30	190	188	209	98.9	90.0
11	Electric Meters	4	1200	1200	1200	100.0	100.0
12	Switch Gears	3	12	12	12	100.0	100.0
13	Washing Machines	20	280	277	290	98.9	95.5
15	Air-Conditioners/Refrigerators/Deep Freezer	10	2153	2153	2153	100.0	100.0
16	Safety Razor Blades	1	744	744	744	100.0	100.0
17	Agricultural Implements	151	412	414	413	100.5	100.2
18	Textiles Machinery	29	78	78	78	100.0	100.0
Total		2041	283882	282915	283454	99.7	99.8

Table 6: Total Number of Production Workers Regarding Large-Scale Industries, August-2022, September-2022 and September-2021

Groups/Items		No. of Units Covered in Sep: 2022	Aug: 2022	Sep: 2022	Sep: 2021	Index of Employment	
						Sep: 2022 with Aug: 2022	Sep: 2022 with Sep: 2021
I	Food Drinks & Tobacco	910					
1	Vegetable Ghee/Cooking Oil	44	3354	3362	3227	100.2	104.2
2	Dairy Products	8	1272	1272	1486	100.0	85.6
3	Wheat Milling	776	6090	6097	6106	100.1	99.9
4	Sugar	44	10540	10530	14401	99.9	73.1
5	Tea (Blended)	3	1039	1052	1057	101.3	99.5
6	Starch & its Products	2	1699	1695	1774	99.8	95.5
7	Soft Drinks & Juices	30	4377	4322	4274	98.7	101.1
8	Cigarettes	3	444	452	485	101.8	93.2
II	Textiles	313					
1	Cotton Textiles	285	133766	133635	131402	99.9	101.7
2	Woolen Textiles	21	720	721	854	100.1	84.4
3	Jute Textiles	7	4697	4697	4110	100.0	114.3
III	Leather Rubber & Plastic Products	147					
1	Leather Tanning	106	1605	1605	1705	100.0	94.1
2	Footwear	41	9322	9306	8948	99.8	104.0
IV	Plywood	6	72	74	65	102.8	113.8
V	Paper & Paper Board	47					
1	Paper & Paper Board	47	3625	3625	3598	100.0	100.8
VI	Chemicals & Petroleum Products	139					
1	Pharmaceuticals	36	3319	3324	3341	100.2	99.5
2	Basic Inorganic Chemicals	8	1385	1386	2139	100.1	64.8
3	Fertilizers	7	3736	3738	3593	100.1	104.0
4	Paints & Varnishes	12	1198	1255	953	104.8	131.7
5	Tyres & Tubes	6	1045	1045	1013	100.0	103.2
6	Soap	62	2256	2240	2256	99.3	99.3
7	Matches	2	437	437	392	100.0	111.5
8	Synthetic Fibre	4	1472	1472	1470	100.0	100.1
9	Petroleum Products	2	493	495	489	100.4	101.2
VII	Non-Metalic & Mineral Products	21					
1	Glass Sheets	9	832	834	447	100.2	186.6
2	Cement	12	4699	4700	5568	100.0	84.4
VIII	Engineering Products	458					
1	Steel Bars/ Angles	40	770	784	788	101.8	99.5
2	Fabricated Metal Products/HMC	1	11	11	12	100.0	91.7
3	Tractors	4	366	366	366	100.0	100.0
4	Automobile Cars/Trucks	1	700	600	860	85.7	69.8
5	Diesel Engines	15	16	16	15	100.0	106.7
6	Motor Cycles	17	2488	2460	2347	98.9	104.8
7	Bicycles	3	527	527	527	100.0	100.0
8	Electric Fans	126	1886	1871	1830	99.2	102.2
9	Electric Transformers	3	1980	1980	1980	100.0	100.0
10	Electric Motors	30	152	150	165	98.7	90.9
11	Electric Meters	4	955	955	955	100.0	100.0
12	Switch Gears	3	10	10	10	100.0	100.0
13	Washing Machines	20	210	205	210	97.6	97.6
15	Air-Conditioners/Refrigerators/Deep Freezer	10	1845	1845	1845	100.0	100.0
16	Safety Razor Blades	1	590	590	590	100.0	100.0
17	Agricultural Implements	151	336	338	342	100.6	98.8
18	Textiles Machinery	29	67	67	67	100.0	100.0
Total		2041	216403	216146	218062	99.9	99.1

Table 7: Average Monthly Total Employment Regarding Large-Scale Industries, 2022-23 (Jul-Sep): VS 2021-22 (Jul-Sep):

Groups/Items		No. of Units Covered in Sep: 2022	2022-23 (Jul-Sep:)	2021-22 (Jul-Sep:)	2022-23 (Jul-Sep:) with 2021-22 (Jul-Sep:)
I	Food Drinks & Tobacco	910			
1	Vegetable Ghee/Cooking Oil	44	5360	5173	103.6
2	Dairy Products	8	1997	2655	75.2
3	Wheat Milling	776	10113	10004	101.1
4	Sugar	44	18474	20854	88.6
5	Tea (Blended)	3	1346	1430	94.1
6	Starch & its Products	2	1846	1994	92.6
7	Soft Drinks & Juices	30	8337	8290	100.6
8	Cigarettes	3	637	656	97.2
II	Textiles	313			
1	Cotton Textiles	285	159521	155500	102.6
2	Woolen Textiles	21	914	1227	74.5
3	Jute Textiles	7	5135	4334	118.5
III	Leather Rubber & Plastic Products	147			
1	Leather Tanning	106	2224	2438	91.2
2	Footwear	41	12239	11555	105.9
IV	Plywood	6	88	86	102.7
V	Paper & Paper Board	47			
1	Paper & Paper Board	47	5072	5026	100.9
VI	Chemicals & Petroleum Products	139			
1	Pharmaceuticals	36	8061	8113	99.4
2	Basic Inorganic Chemicals	8	2223	2660	83.6
3	Fertilizers	7	5548	5510	100.7
4	Paints & Varnishes	12	2355	2311	101.9
5	Tyres & Tubes	6	1339	1301	102.9
6	Soap	62	2828	2878	98.2
7	Matches	2	492	462	106.3
8	Synthetic Fibre	4	1776	1776	100.0
9	Petroleum Products	2	974	979	99.5
VII	Non-Metalic & Mineral Products	21			
1	Glass Sheets	9	1147	613	187.1
2	Cement	12	7434	8166	91.0
VIII	Engineering Products	458			
1	Steel Bars/ Angles	40	1078	1093	98.6
2	Fabricated Metal Products/HMC	1	16	16	100.0
3	Tractors	4	500	499	100.3
4	Automobile Cars/Trucks	1	967	1150	84.1
5	Diesel Engines	15	24	21	114.3
6	Motor Cycles	17	3311	3112	106.4
7	Bicycles	3	686	686	100.0
8	Electric Fans	126	2181	2229	97.8
9	Electric Transformers	3	2680	2680	100.0
10	Electric Motors	30	190	213	89.2
11	Electric Meters	4	1200	1200	100.0
12	Switch Gears	3	12	12	100.0
13	Washing Machines	20	280	291	96.2
15	Air-Conditioners/Refrigerators/Dee	10	2153	2153	100.0
16	Safety Razor Blades	1	744	744	100.0
17	Agricultural Implements	151	413	427	96.8
18	Textiles Machinery	29	78	76	103.1
Total		2041	283993	282593	100.5

Table 8: Average Monthly Number of Production Workers Regarding Large-Scale Industries, 2022-23 (Jul-Sep): VS 2021-22 (Jul-Sep):

Groups/Items		No. of Units Covered in Sep: 2022	2022-23 (Jul-Sep:)	2021-22 (Jul-Sep:)	2022-23 (Jul-Sep:) with 2021-22 (Jul-Sep:)
I	Food Drinks & Tobacco	910			
1	Vegetable Ghee/Cooking Oil	44	3369	3181	105.9
2	Dairy Products	8	1265	1502	84.2
3	Wheat Milling	776	6097	6100	99.9
4	Sugar	44	10998	13238	83.1
5	Tea (Blended)	3	1036	1118	92.7
6	Starch & its Products	2	1702	1854	91.8
7	Soft Drinks & Juices	30	4371	4313	101.3
8	Cigarettes	3	423	485	87.1
II	Textiles	313			
1	Cotton Textiles	285	133774	131232	101.9
2	Woolen Textiles	21	722	947	76.2
3	Jute Textiles	7	4698	4017	117.0
III	Leather Rubber & Plastic Products	147			
1	Leather Tanning	106	1613	1736	92.9
2	Footwear	41	9368	8873	105.6
IV	Plywood	6	72	65	111.3
V	Paper & Paper Board	47			
1	Paper & Paper Board	47	3615	3602	100.4
VI	Chemicals & Petroleum Products	139			
1	Pharmaceuticals	36	3319	3279	101.2
2	Basic Inorganic Chemicals	8	1386	2136	64.9
3	Fertilizers	7	3631	3573	101.6
4	Paints & Varnishes	12	1236	962	128.5
5	Tyres & Tubes	6	1048	1009	103.8
6	Soap	62	2255	2262	99.7
7	Matches	2	438	404	108.5
8	Synthetic Fibre	4	1472	1470	100.1
9	Petroleum Products	2	488	462	105.7
VII	Non-Metalic & Mineral Products	21			
1	Glass Sheets	9	831	447	185.8
2	Cement	12	4698	5594	84.0
VIII	Engineering Products	458			
1	Steel Bars/ Angles	40	776	794	97.7
2	Fabricated Metal Products/HMC	1	11	11	100.0
3	Tractors	4	366	362	101.0
4	Automobile Cars/Trucks	1	667	860	77.5
5	Diesel Engines	15	16	15	106.7
6	Motor Cycles	17	2481	2244	110.6
7	Bicycles	3	527	527	100.0
8	Electric Fans	126	1885	1840	102.5
9	Electric Transformers	3	1980	1980	100.0
10	Electric Motors	30	152	167	91.2
11	Electric Meters	4	955	955	100.0
12	Switch Gears	3	10	10	100.0
13	Washing Machines	20	210	207	101.4
15	Air-Conditioners/Refrigerators/Dec	10	1845	1845	100.0
16	Safety Razor Blades	1	590	590	100.0
17	Agricultural Implements	151	337	345	97.8
18	Textiles Machinery	29	69	64	106.7
Total		2041	216801	216678	100.1

PERFORMANCE OF COTTON TEXTILE INDUSTRY

Report for the month of September 2022

Coverage

This report covers Two Hundred & Eighty Five (285) Cotton Textiles Mills, Producing yarn and cloth.

Spindles/Rotors/Looms	Installed	Average Worked	% Utilization
Spindles	8331624	6352527	76.3%
Rotors	55755	36971	66.3%
Looms	8358	6270	75.0%

MANUFACTURING ACTIVITY (SEPTEMBER 2022)

Production, Consumption and Stock of Cotton Bales

Textile mills purchased 832004 Bales of Cotton during the month, which is 0.2% lower than August 2022. These mills consumed 866238 of Cotton Bales to manufacture Yarn that is 2.3% lower than the last month. The stock of Cotton Bales at the end of the month was 3760672 Bales.

Production, Consumption and Sale of Cotton Yarn

The production of Cotton Yarn during the month was 86455 thousand kgs. Which same as the last month. The mills consumed 18498 thousand kgs. Of Cotton Yarn to manufacture Cotton Cloth, during the month, 82345 thousand kgs. Of Cotton Yarn was sold by the textile mills which was 0.9% lower than the August 2022. The Export of Cotton Yarn during the month was 14389 thousand kgs. Which was 3.7% lower than the last month.

Production and Sale of Cotton Cloth

The production of Cotton Cloth during the month was 57310 thousand Metres. Which is 0.2% higher than the last month, 55094 thousand Metres. Of Cotton Cloth was sold, out of which 14287 thousand Metres was exported by the Textile Mills during the month which was 0.7% higher than last month.

Production of Man Made/Blended Yarn and Cloth

The production of Man Made/Blended Yarn was 51960 thousand kgs. which is 0.2% higher than the last month. The production of Man Made/Blended Cloth was 9065 thousand Mtrs. which is 4.4% lower than the last month.

Employment and Wages/Salaries

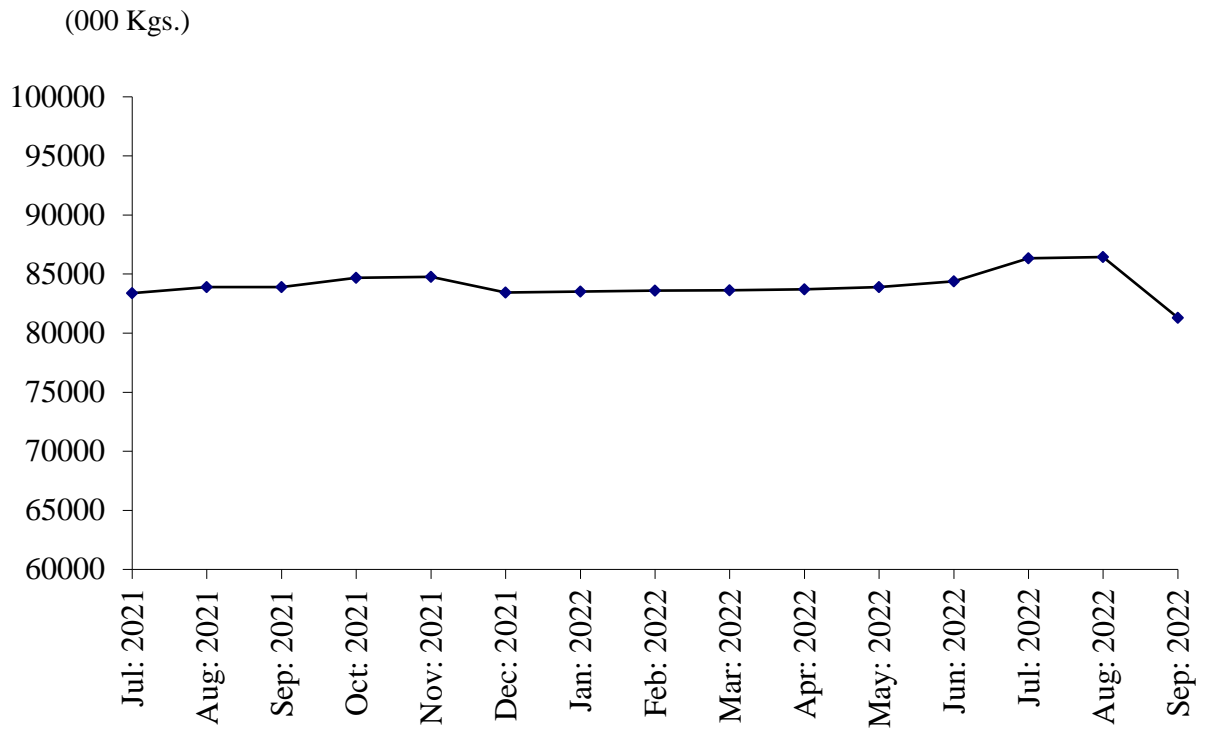
Total employment during the month was 159251 Out of this total employment, 133635 were production workers. Total wages/salaries for the month amounted to 3231.2 Million Rupees.

Production of Man Made/Blended Yarn and Cloth (Since July 2022)

Month/Year	Man Made / Blended Yarn (000 Kgs.)		Man Made / Blended Cloth (000.Mtrs.)	
	2021-22	2022-23	2021-22	2022-23
<u>July- Sep:</u>	<u>159744</u>	<u>155948</u>	<u>27441</u>	<u>28180</u>
July	55304	52124	7807	9635
August	52332	51864	9990	9480
September	52108	51960	9644	9065
October	52419		9699	
November	52985		9624	
December	53313		9966	
January	53432		9858	
March	53416		9916	
March	53559		9925	
April	53854		9951	
May	54181		9965	
June	54289		9995	

PRODUCTION OF COTTON YARN

July 2021 to September 2022



PRODUCTION OF COTTON CLOTH

July 2021 to September 2022

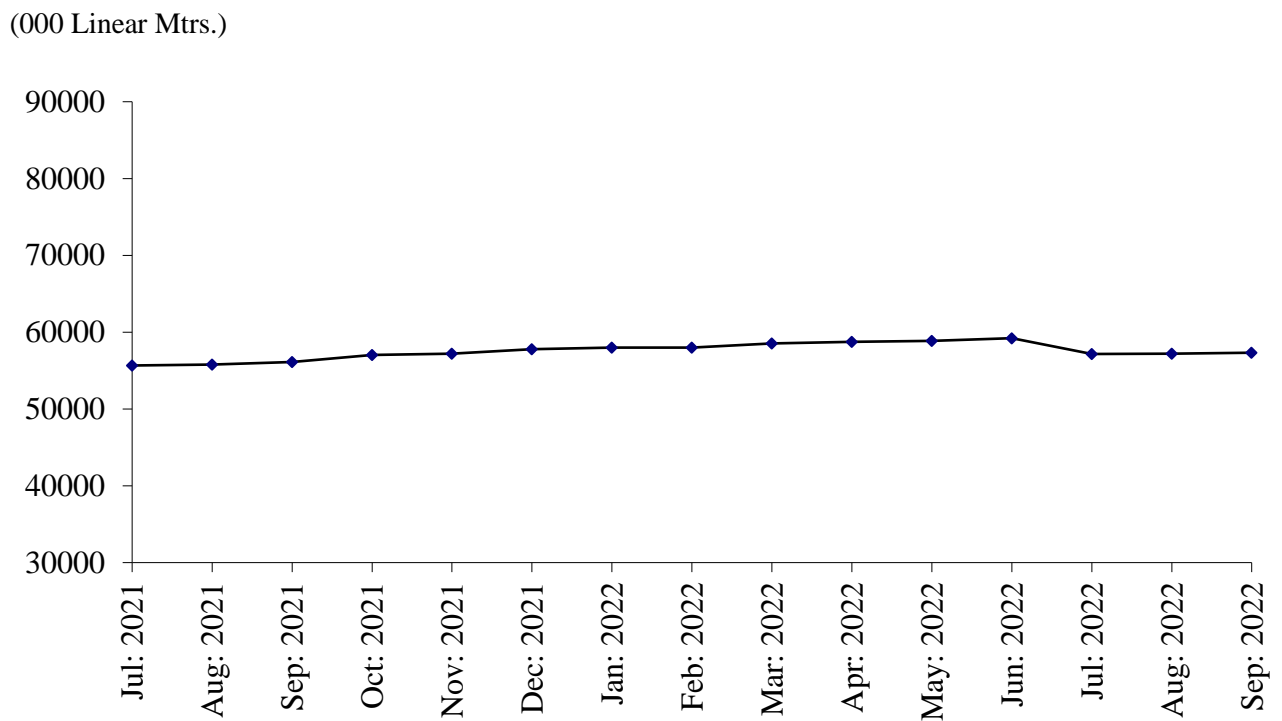


TABLE 10: DETAIL OF THE PURCHASE, SALE, CONSUMPTION AND STOCK OF COTTON BALES.

(one Bale = 170 Kg)

Year (July-June)/ Month	No. Of Reporting Mills	Purchase	Sale	Consumed for Spinning	Stock at the end of Year/Month
2006-07	268	9067493	395172	8691665	1959734
2007-08	268	8457435	451365	7987689	1978115
2008-09	268	7284896	483579	7100353	1679079
2009-10	268	8143340	505951	7889680	1426788
2010-11	274	8801855	484794	8596317	1147532
2011-12	274	8025974	387146	7286551	1499809
2012-13	277	8618084	326690	7863746	1927457
2013-14	277	8301002	434565	7838753	1955141
2014-15	277	8281619	550118	7819131	1867511
2015-16	290	7263140	330272	7085902	1714477
2016-17	290	8271104	587127	7802375	1596079
2017-18	299	8157127	412752	7459759	1880695
2018-19	299	8156763	448409	7552656	2036393
2019-20	299	6953009	399666	6319497	2270239
2020-21	285	8478928	314792	7320669	3113706
2021-22	285	11846884	1594595	9431481	3934514
(Jul: – Sep:)	<u>285</u>	<u>2249070</u>	<u>228798</u>	<u>2060479</u>	<u>3073499</u>
Jul:	285	714986	31523	677441	3119728
Aug:	285	590918	50396	649939	3010311
Sep:	285	943166	146879	733099	3073499
Oct:	285	1602969	124703	707058	3844707
Nov:	285	1388987	29269	838596	4365829
Dec:	285	995600	291992	827294	4242143
Jan:	285	961344	211704	776955	4214828
Feb:	285	904421	217514	676888	4224847
Mar:	285	952248	219210	677308	4280577
Apr:	285	951522	215657	787063	4229379
May	285	1028216	46997	1004486	4206112
June	285	812507	8751	1075354	3934514
<u>2022-23</u>					
(Jul: –Sep:)	<u>285</u>	<u>2484758</u>	<u>18126</u>	<u>2640474</u>	<u>3760672</u>
Jul:	285	820550	5941	887827	3861296
Aug:	285	832204	6141	886409	3800950
Sep:	285	832004	6044	866238	3760672

TABLE 11: PRODUCTION, PURCHASE, CONSUMPTION, SALE AND STOCK OF COTTON YARN

(000 Kgs)

Year (July-June)/ Month	No. of Reporting Mills	Production	Purchase	Consumed	SALE			Stock at the end of Year/ Month
					Total	Within Country	Exported	
2006-07	250	935996	155461	161905	929558	648260	281298	36643
2007-08	263	869531	182463	185558	853110	626939	226171	49969
2008-09	263	744478	138920	150092	736453	562275	174178	46822
2009-10	263	824100	93550	108458	809044	646616	162428	46970
2010-11	263	861278	86884	107441	843590	672067	171523	44101
2011-12	263	807305	83157	76949	824281	661528	162753	33333
2012-13	274	892200	116081	106323	898240	651670	246570	37051
2013-14	274	939965	129796	132378	931890	720629	211561	42544
2014-15	289	982172	132904	139454	974797	750512	224285	43369
2015-16	292	987258	139201	162386	962945	753246	209699	44497
2016-17	290	1063645	143722	153715	1056034	857310	198724	42115
2017-18	247	1082179	191064	179554	1090682	857987	232695	45122
2018-19	247	1075008	186447	178128	1082390	888248	194132	46059
2019-20	247	976627	221511	180109	997528	812952	184576	66560
2020-21	247	998181	342664	169862	1182999	991173	191826	54544
2021-22	247	1006783	252995	215857	1033312	843488	189824	65153
(Jul: – Sep:)	<u>247</u>	<u>251182</u>	<u>69218</u>	<u>35350</u>	<u>287118</u>	<u>233985</u>	<u>53133</u>	<u>52476</u>
Jul:	247	83388	25366	8227	98638	79839	18799	56433
Aug:	247	83907	23576	9282	103674	84065	19609	50960
Sep:	247	83887	20276	17841	84806	70081	14725	52476
Oct:	247	84671	20701	18511	84538	69940	14598	54799
Nov:	247	84772	21556	20848	84334	66359	17975	55945
Dec:	247	83428	20486	22634	83752	66955	16797	53473
Jan:	247	83508	20624	20603	80948	67143	13805	56054
Feb:	247	83590	20632	19968	82999	66624	16375	57309
Mar:	247	83634	20862	19901	81499	67017	14482	60405
Apr:	247	83710	21064	19852	83671	67651	16020	61656
May	247	83899	19937	19444	81609	69841	11768	64439
Jun:	247	84389	17915	18746	82844	67973	14871	65153
<u>2022-23</u>								
(Jul: – Sep:)	<u>247</u>	<u>259230</u>	<u>54418</u>	<u>55757</u>	<u>248888</u>	<u>204480</u>	<u>44408</u>	<u>74156</u>
July	247	86335	17915	18646	83465	68391	15074	67292
Aug:	247	86440	18309	18613	83078	68133	14945	70350
Sep:	247	86455	18194	18498	82345	67956	14389	74156

TABLE 12: PRODUCTION, PURCHASE, SALE AND STOCK OF COTTON CLOTH.

(000 Mtrs.)

Year (July-June)/ Month	No. Of Reporting Mills	Production	Purchased	SALE			Stock at the end of Year/ Month
				Total	Within Country	Exported	
2006-07	50	421403	93715	508661	267082	241579	56285
2007-08	52	401275	22913	410559	245425	165134	69914
2008-09	52	350406	52966	397698	207800	189898	75588
2009-10	52	369035	62330	438802	258870	179932	68151
2010-11	53	377058	27814	411759	273413	138346	61264
2011-12	53	324906	26410	354262	245679	108583	58318
2012-13	56	337955	39613	384441	227950	156491	51445
2013-14	56	414827	44459	454427	230989	223438	56304
2014-15	57	468206	33332	500905	297034	203871	56937
2015-16	57	522412	18246	542268	325894	216374	55327
2016-17	58	670884	42791	703647	431374	272273	65355
2017-18	39	703513	44908	749157	439486	309671	64619
2018-19	39	697096	38577	751178	456319	294859	49114
2019-20	39	650317	30785	658561	455655	202906	75042
2020-21	38	644439	48331	699107	513618	185489	65318
2021-22	38	690956	48439	728202	512555	215647	76511
(Jul: – Sep:)	<u>38</u>	<u>167591</u>	<u>30343</u>	<u>193500</u>	<u>147630</u>	<u>45870</u>	<u>69752</u>
Jul:	38	55662	12787	63374	51764	11610	70393
Aug:	38	55805	14537	71790	53582	18208	68945
Sep:	38	56124	3019	58336	42284	16052	69752
Oct:	38	57045	4417	56074	40706	15368	75140
Nov:	38	57200	4149	58292	41233	17059	78197
Dec:	38	57790	1234	63512	40608	22904	73709
Jan:	38	57978	1121	58135	37346	20789	74673
Feb:	38	57999	1427	56594	37043	19551	77505
Mar:	38	58539	1344	58767	39368	19399	78621
Apr:	38	58740	1283	60396	39257	21139	78248
May:	38	58855	1327	63388	43979	19409	76511
Jun:	38	59219	1794	59544	45385	14159	88943
<u>2022-23</u>							
(Jul: – Sep:)	<u>38</u>	<u>171670</u>	<u>5510</u>	<u>164748</u>	<u>122157</u>	<u>42591</u>	<u>88943</u>
Jul:	38	57145	1756	54757	40640	14117	80655
Aug:	38	57215	1826	54897	40710	14187	84799
Sep:	38	57310	1928	55094	40807	14287	88943

TABLE 13: EMPLOYMENT AND WAGES/SALARIES

Year (July-June)/ Month	No. Of Reporting Mills	E M P L O Y M E N T (Nos.)*			WAGES/SALARIES (000 Rs.)		
		Total	Production Workers	Office Staff	Total	Production Workers	Office Staff
2006-07	288	183201	158112	25089	791772	620130	171642
2007-08	288	176643	152036	24607	842722	661182	181540
2008-09	288	162984	139152	23832	802438	629608	172830
2009-10	288	168727	144487	24240	944137	750701	193436
2010-11	295	166718	142756	23962	1149580	893633	255947
2011-12	295	163535	140315	23220	1171743	926744	245002
2012-13	280	169697	144411	25286	1323153	1043134	280586
2013-14	281	172129	144216	27913	1627528	1286234	341294
2014-15	289	170528	143048	27480	1734882	1372957	361925
2015-16	289	164049	135777	28272	1925533	1497525	423209
2016-17	298	165251	133259	31992	2069106	1599857	469249
2017-18	299	161727	133190	28537	2251084	1756455	494629
2018-19	299	157846	131085	26761	2438412	1891246	247166
2019-20	299	151851	126203	25648	2499773	1973563	526210
2020-21	285	154706	129886	24820	2816361	2213454	602907
2021-22	285	157343	132207	25136	3146792	2425150	721642
(Jul: – Sep:)	285	155500	131232	24268	2988067	2329542	658525
Jul:	285	154695	130621	24074	2812038	2219728	592310
Aug:	285	156003	131674	24329	3055240	2374009	681231
Sep:	285	155803	131402	24401	3096924	2394889	702035
Oct:	285	156075	131460	24615	3097145	2388151	708994
Nov:	285	156507	131457	25050	3192910	2448728	744182
Dec:	285	156748	131590	25158	3181397	2451990	729407
Jan:	285	158294	132490	25804	3180335	2441813	738522
Feb	285	158540	132610	24930	3199488	2448892	750596
Mar:	285	158640	133007	24633	3213548	2453189	760359
Apr:	285	158796	133173	25623	3252167	2467214	784953
May	285	158989	133329	24666	3252787	2480662	772125
Jun	285	159028	133672	25356	3227523	2532533	773840
2022-23							
(Jul: – Sep:)	285	159521	133774	25747	3263373	2487578	775795
Jul:	285	159734	133921	24812	3312202	2537499	774703
Aug:	285	159579	133766	25813	3246751	2467880	778871
Sep:	285	159251	133635	25616	3231165	2457355	773810

* = Monthly averages over the three months.

PERFORMANCE OF WOOLLEN TEXTILE INDUSTRY

Report for the month of September 2022

Coverage

This report covers Twenty Six (21) Woollen Textile Mills of the Punjab.

Production

The Woollen Textile Mills Produced 642 thousand Kgs. of Woollen Yarn, and nil production of Knitting Wool during the month of September 2022. The production of Woollen Yarn was 1.3% higher than the last month and Knitting Wool was 100% higher than the last month respectively.

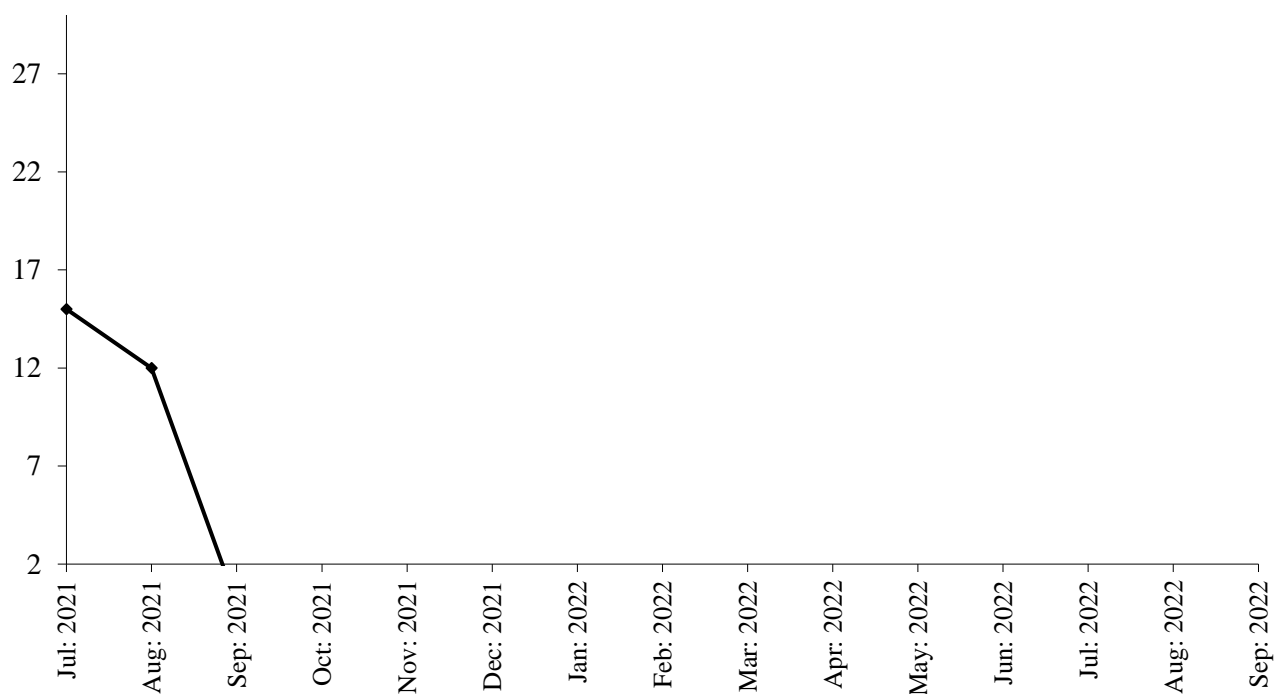
Employment

Total employment in Woollen Textile Mills during the month was 915 which was 0.2% higher the last month. Out of this total employment, 721 were production workers.

PRODUCTION OF KNITTING WOOL

July 2021 to September 2022

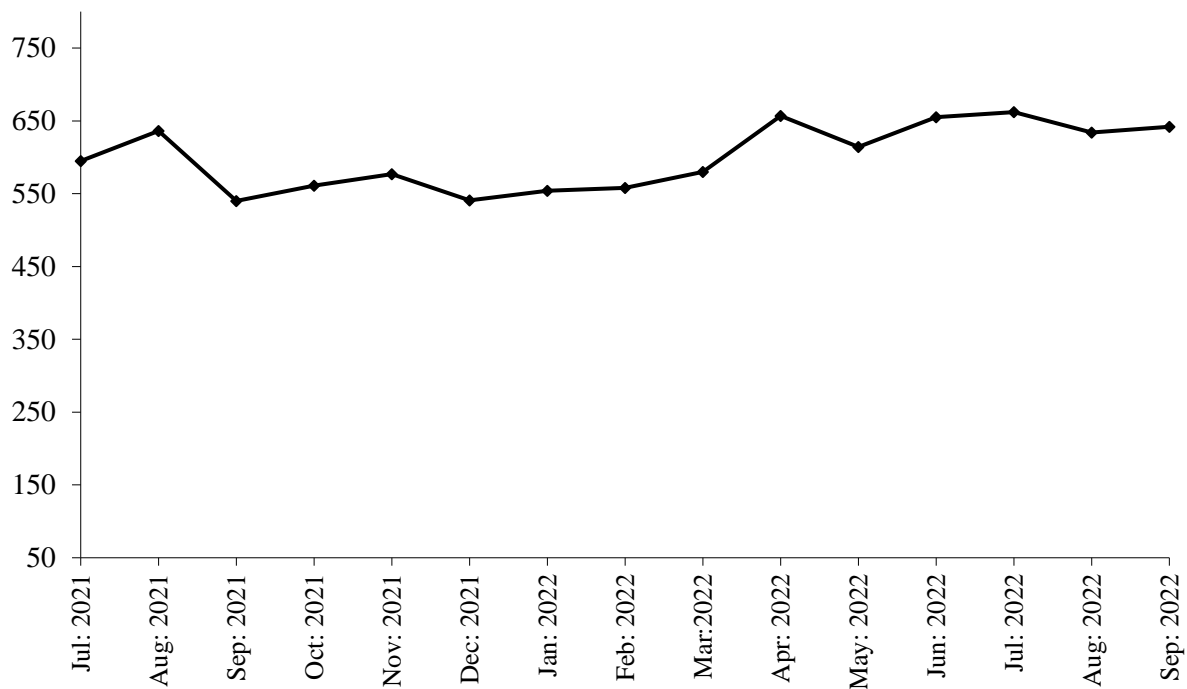
(000 Kg.)



PRODUCTION OF WOOLEN YARN

July 2021 to September 2022

(000 Kg.)



PRODUCTION OF WOOLLEN WORSTED CLOTH

July 2021 to September 2022

(000 Mtrs.)

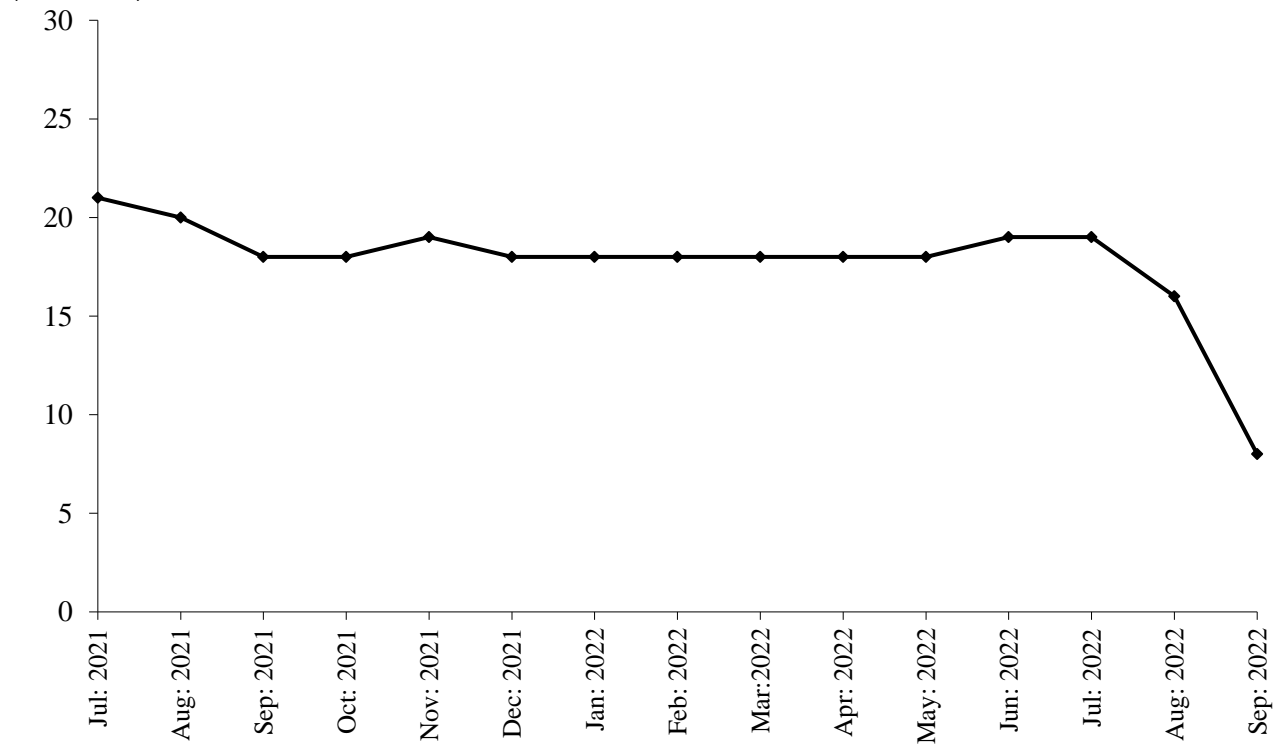


TABLE 13: MANUFACTURING ACTIVITY OF WOOLLEN INDUSTRY.

Year (July-June)/ month	No. Of Reporting Units	PRODUCTION				EMPLOYMENT (Nos.) *	
		Woollen Yarn (M.Tons)	Knitting Wool (M.Tons)	Woollen Worsted Cloth (000 Mtrs.)	Blankets (Nos.)	Total	Production Workers
2006-07	27	1056	3263	612	-	1675	1309
2007-08	27	1194	3306	819	-	1719	1401
2008-09	27	1046	2778	991	-	1787	1476
2009-10	27	1154	2565	825	-	1797	1491
2010-11	27	1037	2351	844	-	1729	1478
2011-12	27	826	2097	808	-	1680	1405
2012-13	27	740	2250	592	-	1661	1413
2013-14	27	864	1633	221	-	1410	1153
2014-15	27	1510	1805	243	-	1301	1037
2015-16	27	1334	1963	246	-	1252	998
2016-17	27	1738	1898	226	-	1318	1056
2017-18	26	2159	1673	160	-	1397	1116
2018-19	26	1918	1488	11	-	1372	1096
2019-20	25	2731	883	79	-	1318	1055
2020-21	21	7988	428	172	-	1303	1017
2021-22	21	7068	27	223	-	1096	832
(Jul: –Sep:)	<u>21</u>	<u>1771</u>	<u>27</u>	<u>59</u>	<u>-</u>	<u>1227</u>	<u>947</u>
Jul:	21	595	15	21	-	1283	999
Aug:	21	636	12	20	-	1273	989
Sep:	21	540	-	18	-	1125	854
Oct:	21	561	-	18	-	1124	853
Nov:	21	577	-	19	-	1125	854
Dec:	21	541	-	18	-	1014	749
Jan:	21	554	-	18	-	1098	800
Feb:	21	558	-	18	-	1101	808
Mar:	21	580	-	18	-	1144	854
Apr:	21	657	-	18	-	1013	751
May	21	614	-	18	-	928	736
Jun:	21	655	-	19	-	928	736
<u>2022-23</u>							
(Jul: – Sep:)	<u>21</u>	<u>1938</u>	<u>78</u>	<u>51</u>	<u>-</u>	<u>914</u>	<u>722</u>
Jul:	21	662	18	19	-	913	726
Aug:	21	634	20	16	-	913	720
Sep:	21	642	40	16	-	915	721

* = Monthly Average over three months.

ANNEXURE – III

PERFORMANCE OF VEGETABLE GHEE/COOKING OIL INDUSTRY

Report for the month of September 2022

Coverage

This report covers Fifty (50) Vegetable Ghee/Cooking Oil Mills of the Punjab Province.

Purchase, Consumption and Stock of Edible Oil

During the month of September 2022, about 29839 metric tons Local Oil and 40121 metric tons Imported Palm Oil was purchased by the Mills, meanwhile, about 8807 metric tons Other Oil was produced as compared to 8794 metric tons produced in the last month. The Oil intake for production of Vegetable Ghee/Cooking Oil during the month was recorded at 44628 metric tons witnessed 4.0% increase as compared to the last month. The stock of Oil at the end of the month was closed at 88957 metric tons.

Production, Sale and Stock of Vegetable Ghee/Cooking Oil

Vegetable Ghee and Cooking Oil production in the province during the month registered 1.0% percent increase as compared to last month. The data revealed about 74112 metric tons & 16830 metric tons production of Vegetable Ghee and Cooking Oil during the month respectively. The sale of Vegetable Ghee/Cooking Oil during the month was 88929 metric tons witnessed 1.0% percent increase as compared to the last month. The stock of Vegetable Ghee/Cooking Oil closed at the end of the month at 15420 metric tons.

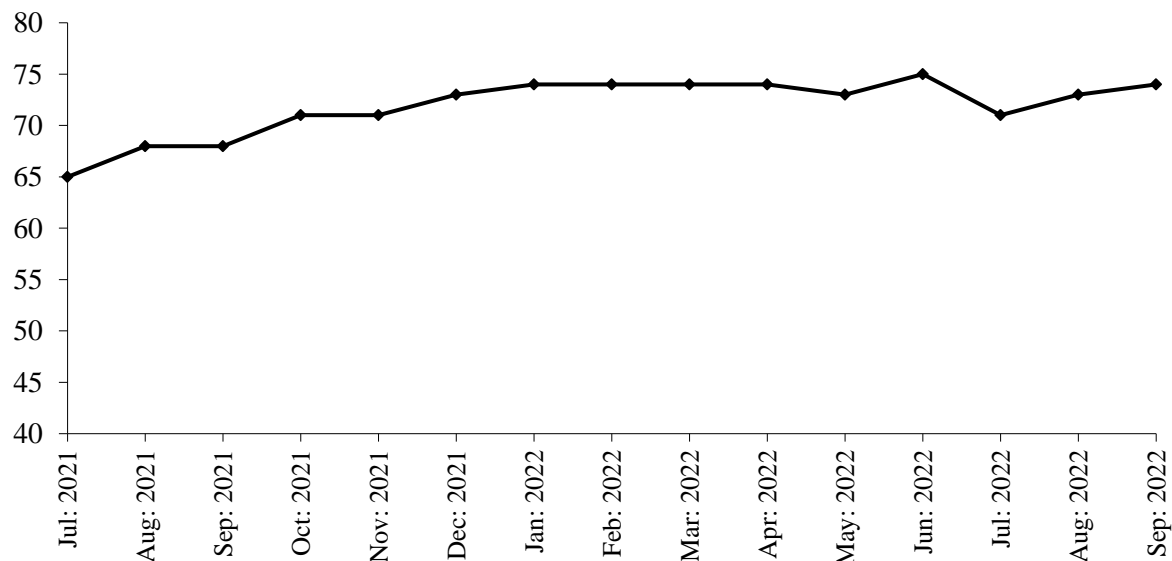
Employment and Wages/Salaries

Total employment recorded in the Mills of Vegetable Ghee/Cooking Oil during the month was 5371, 0.2% higher than the last month. Production workers was 3362 amount of Rs.98 million was paid by the Mills against total wages/salaries for the month of September 2022.

PRODUCTION OF VEGETABLE GHEE

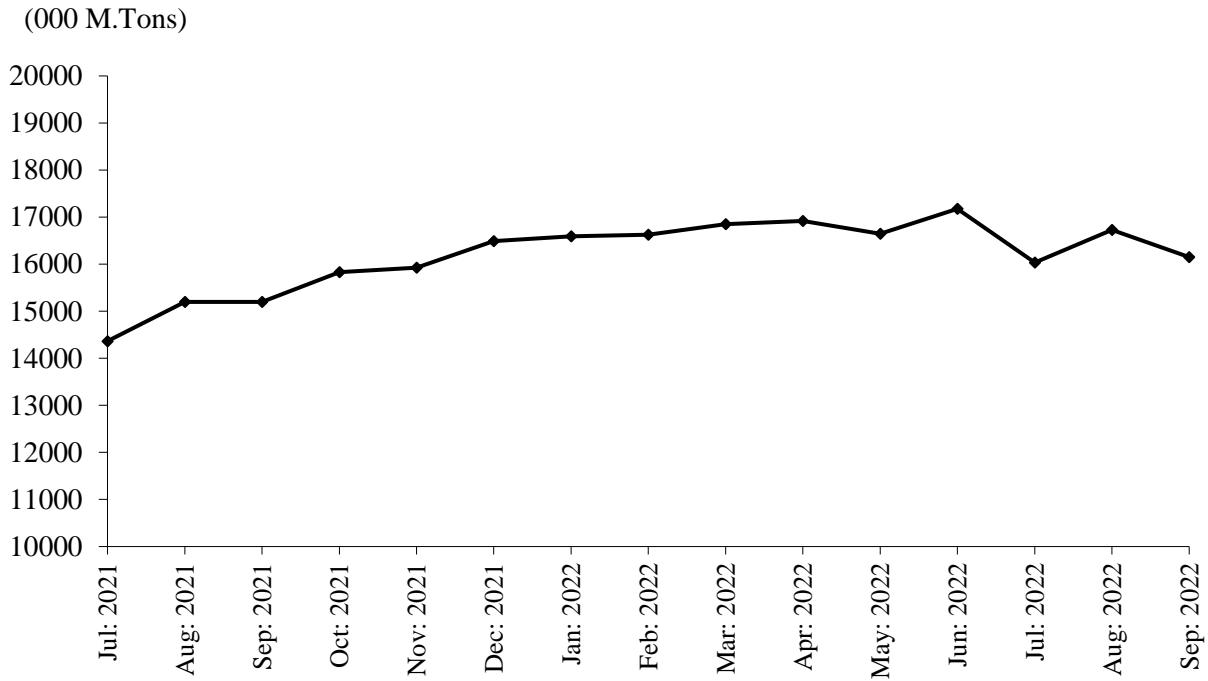
July 2021 to September 2022

(000 M.Tons)



PRODUCTION OF COOKING OIL

July 2021 to September 2022



PRODUCTION OF VEGETABLE GHEE/COOKING OIL

July 2021 to September 2022

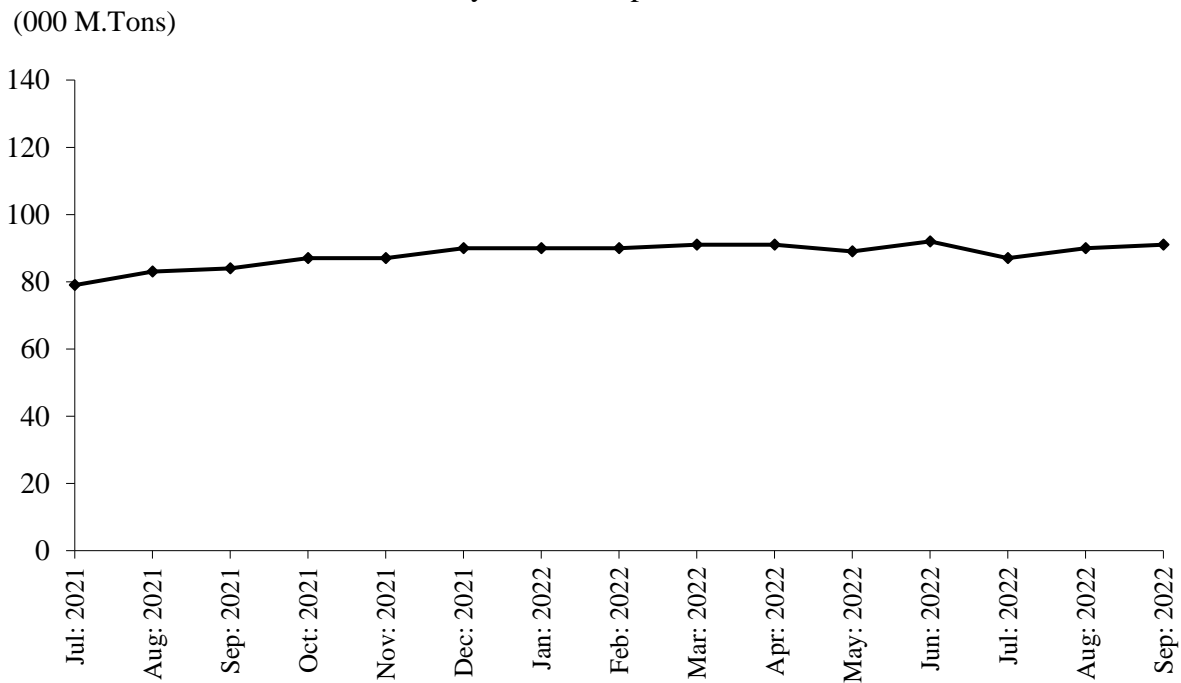


TABLE 15:DETAIL OF THE STOCK, PURCHASED, CONSUMED AND SALE OF EDIBLE OIL.

(M. Tons)

Year (July-June)/ Month	No. Of Repor- ting Mills	LOCALLY PURCHASED		PRODUCED		Impor- ted	Consumed / Sent for Refinery	Sold/ Trans- ferred	Stock at the end of Year/ Month
		Cotton Seed Oil	Other Oil	Cotton Seed Oil	Other Oil				
2006-07	54	8076	50042	-	4068	509698	576065	2730	20158
2007-08	54	-	92673	-	-	432703	530500	-	15034
2008-09	54	-	100857	-	5206	398310	487250	-	32157
2009-10	54	-	104202	-	25852	512468	615680	25090	33909
2010-11	54	327	183884	-	35675	482008	634601	77461	23741
2011-12	54	-	183112	-	34577	423778	607993	37657	19558
2012-13	54	-	229765	-	43652	431163	660016	33454	30668
2013-14	54	-	216660	-	38972	495070	696775	42965	41630
2014-15	53	-	162624	-	49151	585062	753658	50338	34471
2015-16	53	-	185823	-	44073	885878	885882	18622	40602
2016-17	50	-	220571	-	60257	633199	881071	39566	33992
2017-18	51	-	206532	-	83627	849072	1074228	60975	38020
2018-19	51	-	213910	-	92005	836051	1055742	77884	46360
2019-20	52	-	248945	-	60421	715798	921638	102073	47813
2020-21	50	-	374560	-	84020	578628	837241	176122	65658
2021-22	44	-	363623	-	137479	560354	710634	330409	86071
(Jul: – Sep:)	44	=	73439	=	37788	140852	180909	68781	68047
Jul:	44	-	25776	-	10656	44694	63009	24424	59351
Aug:	44	-	23136	-	13397	44376	60793	21168	58299
Sep:	44	-	24527	-	13735	51782	57107	23189	68047
Oct:	44	-	25936	-	14770	44265	58513	23893	70612
Nov:	44	-	28598	-	11030	44050	58333	20075	75882
Dec:	44	-	33827	-	10882	46751	65239	25231	76872
Jan:	44	-	30935	-	9883	46492	65081	28256	70845
Feb:	44	-	32027	-	11904	51043	62442	30363	73014
Mar:	44	-	31088	-	12207	50831	61334	30563	75243
Apr:	44	-	37171	-	11590	48851	55727	32757	84371
May:	44	-	37910	-	9034	45602	52011	34529	90377
Jun:	44	-	32692	-	8391	41617	51645	35361	86071
<u>2022-23</u>									
(Jul: – Sep:)	44	=	88328	=	26195	120387	100180	131844	88957
Jul:	44	-	29239	-	8594	40283	33465	44310	86412
Aug:	44	-	29250	-	8794	39983	32965	42906	88568
Sep:	44	-	29839	-	8807	40121	33750	44628	88957

TABLE 16:DETAIL OFPRODUCTION, SALE AND STOCK OF VEGETABLE GHEE/COOKING OIL

(M.Tons)

Year (July-June)/ Month	No. Of Repor- ting Mills	P R O D U C T I O N			Sale	Stock At the end
		Vegetable Ghee	Cooking Oil	Total		
2006-07	54	492595	71696	564291	562729	7932
2007-08	54	438129	55186	493315	494707	6540
2008-09	54	427976	60147	488123	486544	8119
2009-10	54	519765	87487	607252	606825	8546
2010-11	54	524809	96711	621520	622978	7088
2011-12	54	507688	93151	600839	600269	7658
2012-13	54	537111	119437	656548	654031	9059
2013-14	54	533628	20248	159078	156829	10897
2014-15	53	576943	102881	679824	679487	8985
2015-16	53	641889	113708	755597	755526	9057
2016-17	50	644550	110166	754716	755306	8170
2017-18	51	786226	127257	913483	912553	9100
2018-19	51	804497	152352	956849	944020	18074
2019-20	50	880796	193901	1074697	1076905	15866
2020-21	50	860505	198332	1058837	1063974	10729
2021-22	44	859227	193809	1053036	1051023	12742
(Jul: – Sep:)	44	200892	44765	245657	246853	9533
Jul:	44	64561	14365	78926	84457	5198
Aug:	44	68008	15199	83207	78504	9901
Sep:	44	68323	15201	83524	83892	9533
Oct:	44	70951	15830	86781	86783	9531
Nov:	44	71123	15924	87047	87926	8652
Dec:	44	73132	16489	89621	88414	9859
Jan:	44	73825	16589	90414	90912	9361
Feb:	44	73864	16624	90488	90166	9683
Mar:	44	73908	16848	90756	89874	10565
Apr:	44	74110	16918	91028	89536	12057
May	44	72564	16646	89210	88979	12288
Jun:	44	74858	17176	92034	91580	12742
<u>2022-23</u>						
(Jul: – Sep:)	44	218832	49591	268423	266410	14755
Jul:	44	71360	16036	87396	87036	13102
Aug:	44	73360	16725	90085	87767	15420
Sep:	44	74112	16830	90942	91607	14755

TABLE 17:EMPLOYMENT AND WAGES/SALARIES.

Year (July-June)/ Month	No. Of Reporting Mills	E M P L O Y M E N T (NOS)*			WAGES/SALARIES (000 Rs.)	
		Total	Production Workers	Office Staff	Total	Production Workers
2006-07	54	4308	2551	1757	20138	11068
2007-08	54	3917	2408	1509	19923	11167
2008-09	54	3406	2109	1297	23522	12589
2009-10	54	3449	2176	1273	30532	17526
2010-11	54	3675	2366	1309	34883	20727
2011-12	54	3703	2558	1145	35708	20873
2012-13	54	3798	2625	1173	40008	23277
2013-14	54	4072	2753	1319	50720	28667
2014-15	53	4009	2756	1253	55717	31302
2015-16	53	4122	2901	1221	64521	38408
2016-17	50	3933	2678	1255	62720	35328
2017-18	51	4105	2737	1368	65889	38083
2018-19	52	4111	2787	1324	69521	39564
2019-20	50	5001	3286	1715	77791	41351
2020-21	50	5111	3250	1861	91913	42105
2021-22	44	5295	3287	2008	99277	48422
(Jul: – Sep:)	<u>44</u>	<u>5173</u>	<u>3181</u>	<u>1992</u>	<u>95899</u>	<u>47026</u>
Jul:	44	5121	3109	2012	93456	44544
Aug:	44	5195	3206	1989	96667	49786
Sep:	44	5204	3227	1977	97573	46748
Oct:	44	5274	3279	1995	97913	46855
Nov:	44	5286	3286	1997	98266	46906
Dec:	44	5329	3302	2027	99440	48213
Jan:	44	5339	3324	2015	99696	48380
Feb:	44	5351	3332	2019	99782	49627
Mar:	44	5411	3349	2062	101367	50313
Apr:	44	5425	3355	2070	102153	50425
May:	44	5259	3288	1971	101407	48392
Jun:	44	5348	3387	1961	103603	50878
<u>2022-23</u>						
(Jul: – Sep:)	<u>44</u>	<u>5358</u>	<u>3382</u>	<u>1976</u>	<u>105711</u>	<u>51842</u>
Jul:	44	5351	3392	1959	105579	51995
Aug:	44	5351	3392	1959	105579	51995
Sep:	44	5371	3362	2009	105974	51535

* =Monthly averages over the three months.

PERFORMANCE OF BEVERAGES INDUSTRY

Report for the month of September 2022

Coverage

The report covers Thirty (30) Beverages factories of the Punjab.

Production

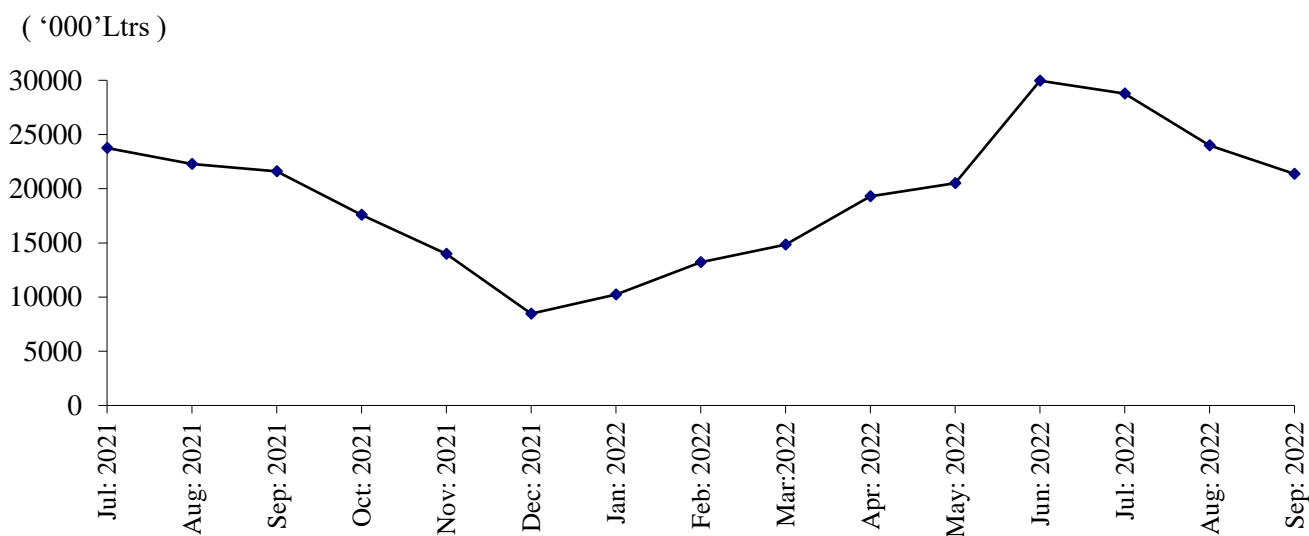
The factories produced 185552 thousand litres of Soft Drinks and 21348 thousand litres of Fruit Juices during September 2022. The production of Soft Drinks and Fruit Juices was 13.5% and 3.5% lower than the last month respectively.

Employment

Total employment in these factories was 8203 which was 2.2% lower than the last month. Out of this total employment 4322 were production workers.

PRODUCTION OF FRUIT JUICES

July 2021 to September 2022



PRODUCTION OF SOFT DRINKS

July 2021 to September 2022

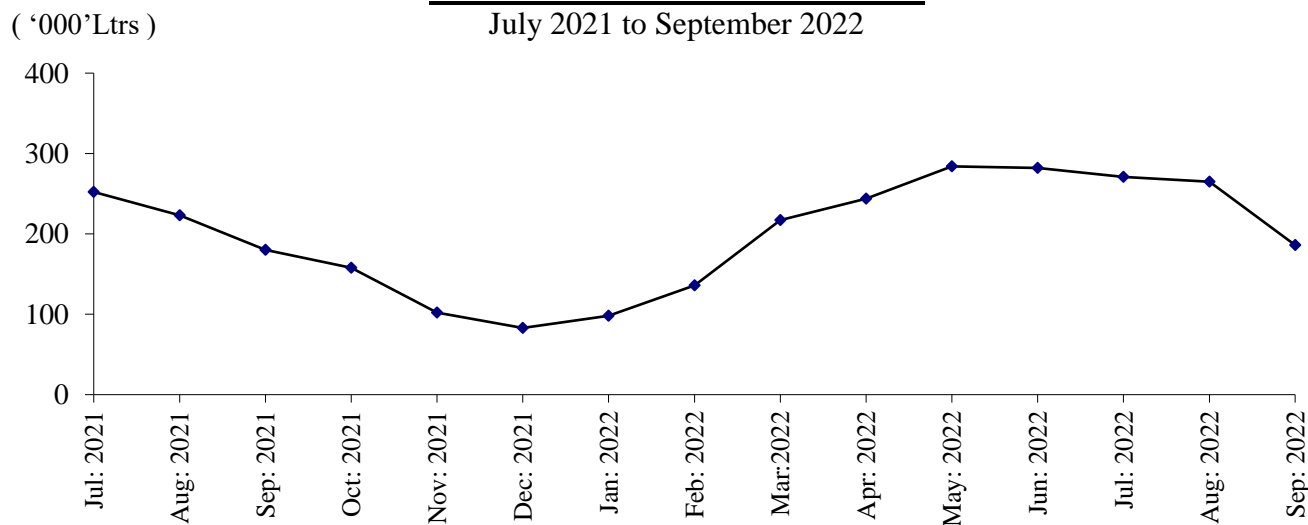


Table 18: MANUFACTURING ACTIVITY OF BEVERAGES INDUSTRY.

Year (July-June)/ Month	No. Of Reporting Units	PRODUCTION (in '000' Ltrs)		EMPLOYMENT (NOS.)*	
		Soft Drinks	Fruit Juices	Total	Production Workers
2006-07	39	1144416	105395	5518	2536
2007-08	37	1367154	98692	6621	2733
2008-09	37	1445760	67932	6492	3037
2009-10	37	1041643	68020	6925	3323
2010-11	37	982963	92115	7577	3027
2011-12	37	1155234	116048	7948	3136
2012-13	37	1349580	120176	8224	3501
2013-14	37	1409663	127571	8125	3659
2014-15	34	1552102	156889	8328	4379
2015-16	30	1722698	139237	15461	8600
2016-17	29	1964432	154877	8549	3997
2017-18	30	1893694	177397	8981	4216
2018-19	31	1830166	219885	8529	4306
2019-20	31	1587814	183550	8173	4099
2020-21	31	1964275	172608	7988	4053
2021-22	30	2258557	214698	8173	4210
(Jul: –Sep:)	<u>30</u>	<u>655053</u>	<u>67628</u>	<u>8290</u>	<u>4313</u>
Jul:	30	252003	23753	8270	4342
Aug:	30	222993	22278	8338	4322
Sep:	30	180057	21597	8263	4274
Oct:	30	157763	17572	8074	4122
Nov:	30	102146	13969	7970	4039
Dec:	30	83127	8469	7756	3839
Jan:	30	97868	10246	7719	3814
Feb:	30	135719	13224	7925	3973
Mar:	30	217189	14829	8402	4414
Apr:	30	244033	19299	8433	4449
May	30	284156	20505	8435	4440
Jun:	30	281503	28957	8493	4488
<u>2022-23</u>					
(Jul: – Sep:)	<u>30</u>	<u>654156</u>	<u>69940</u>	<u>8337</u>	<u>4371</u>
Jul:	30	254026	26462	8425	4413
Aug:	30	214578	22130	8384	4377
Sep:	30	185552	21348	8203	4322

* =Monthly Average over the three months.

PERFORMANCE OF SUGAR INDUSTRY

Report for the month of September 2022

Coverage

This report covers Forty four (44) Sugar Mills located in the Punjab Province.

Cane Crushing

Total cane crushed for the month of “September” 2022, because of the off crushing season.

Production

Total Sugar Produced during the month of “September” 2022, is nil due to off season.

Sale and Stock of Sugar 2021-22

The sugar sold out from the previous stock as reported during the month of September 2022 was 254986 Metric Tons and the remaining stock of sugar is 1321787 Metric Tons.

Employment and Wages / Salaries

Total employment during the month of September 2022 was 18125. Out of this total employment, the number of production workers were 10530. The total wages/salaries during this month is amounted to 580 million rupees.

MONTHLY PRODUCTION OF SUGAR

Season 2021-22 VS 2022-23

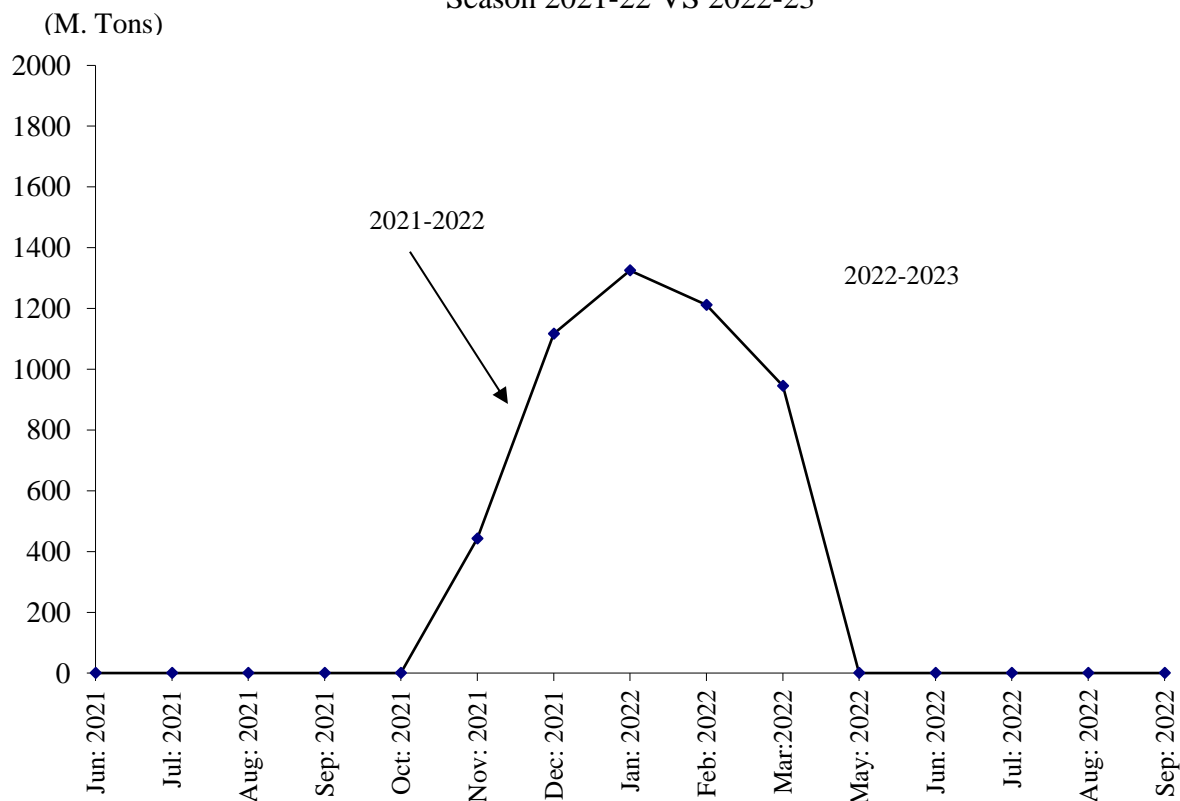


Table 19: MANUFACTURING ACTIVITY OF SUGAR INDUSTRY.

(Metric Tons)

Year	Months	No. Of Units Covered	Sugarcane Crushed	Opening Stock Of Sugar	Production Of Sugar	Sale Of Sugar	Closing Stock Of Sugar	Molasses
2006-07	Nov: 06 – Apr: 07	41	27105733	-	2163263	-	-	1544850
2007-08	Nov: 07- May 08	41	29394739	-	2676345	-	-	1751935
2008-09	Nov:08-Apr:09	45	20388990	-	1926209	-	-	1280422
2009-10	Nov:09 –March10	46	22460655	-	1987285	-	-	887362
2010-11	Nov:10 –April 11	46	27026172	128193	2475907	2013178	590922	709876
2011-12	Oct: 11- Apr: 12	46	32310644	590922	3057611	2633244	1015289	750699
2012-13	Nov:12–May 13	46	35745878	1015289	3739171	4064180	690280	666328
2013-14	Nov:13–Apr: 14	46	30864941	690280	3075144	2013384	1752040	807507
2014-15	Nov:14–Apr: 15	46	31453631	1752040	3036312	2775995	2012357	66682
2015-16	Nov:15–Apr: 16	44	28922605	2012357	2666278	2951038	1727597	571184
2016-17	Nov: 16-Apr: 17	44	44143327	1727597	4314228	2754948	3286877	1522522
2017-18	Nov: 17-Apr: 18	45	53190310	3286877	5111165	6745070	1652972	1352698
2018-19	Dec: 18-Apr: 19	45	30835769	1652972	4868545	4278122	2243395	1361477
2019-20	Nov: 19-Mar:20	44	23839905	1973322	3102104	4054794	1020632	671189
2020-21	Nov: 20-Mar:21	44	50011167	1020632	3877150	3620582	1277200	1166132
2021-22	Nov:21-Apr:22	44	47559505	1277200	5258131	4696627	1838704	2631504
<u>2022-23</u>	(Jul: – Sep:)	<u>44</u>	<u>:</u>	<u>1838704</u>	<u>:</u>	<u>771903</u>	<u>1066801</u>	<u>:</u>
	Jul:	44	-	1838704	-	309554	1529150	-
	Aug:	44	-	1529150	-	207363	1321787	-
	Sep:	44	-	1321787	-	254986	1066801	-

TABLE 20: EMPLOYMENT AND WAGES / SALARIES

Year /Months	No. Of Units Covered	EMPLOYMENT (Nos.)			WAGES / SALARIES (000 Rs.)	
		Total	Production Workers	Office Staff	Total	Production Workers
2007-2008	<u>41</u>	<u>28047</u>	<u>17824</u>	<u>10223</u>	<u>155822</u>	<u>89252</u>
(Crushing Season)		31966	20512	11454	176659	103596
(Non-Crushing Season)		22559	14062	8497	126651	69170
2008-2009	<u>45</u>	<u>21716</u>	<u>13193</u>	<u>8524</u>	<u>164256</u>	<u>95503</u>
(Crushing Season)		<u>27532</u>	<u>17387</u>	<u>10145</u>	<u>193291</u>	<u>119674</u>
(Non-Crushing Season)		20262	12144	32473	156998	89461
2009-10	<u>46</u>	<u>24448</u>	<u>15250</u>	<u>9197</u>	<u>197290</u>	<u>116870</u>
(Crushing Season)		31580	20435	11145	247830	153135
(Non-Crushing Season)		19354	11547	7807	161190	90967
2010-11	<u>46</u>	<u>22967</u>	<u>14468</u>	<u>8499</u>	<u>209749</u>	<u>126526</u>
(Crushing Season)		27879	18340	9539	246395	154557
(Non-Crushing Season)		18055	10595	7459	173102	98495
2011-12	<u>46</u>	<u>23078</u>	<u>13932</u>	<u>9145</u>	<u>230146</u>	<u>132212</u>
(Crushing Season)		26017	10957	8007	204749	111423
(Non-Crushing Season)		18964	16058	9959	248287	147060
(2012-13)	<u>46</u>	<u>25311</u>	<u>16021</u>	<u>9848</u>	<u>276892</u>	<u>171611</u>
(Crushing Season)	46	28541	19094	10404	318296	203325
(Non-Crushing Season)	46	20788	11719	9069	127701	127212
(2013-14)	<u>46</u>	<u>25672</u>	<u>16563</u>	<u>9009</u>	<u>318239</u>	<u>196709</u>
(Crushing Season)	46	29968	19690	10278	366452	229798
(Non-Crushing Season)	46	21300	13907	7393	260446	162496
(2014-15)	<u>46</u>	<u>23845</u>	<u>15042</u>	<u>8804</u>	<u>337354</u>	<u>207609</u>
(Crushing Season)	46	27988	18137	9852	389645	244041
(Non-Crushing Season)	46	19703	11947	7755	285051	171178
(2015-16)	<u>44</u>	<u>22554</u>	<u>14023</u>	<u>8531</u>	<u>341965</u>	<u>205969</u>
(Crushing Season)	44	25752	16141	9611	388494	237002
(Non-Crushing Season)	44	19356	11738	7618	298435	174937
2016-17	<u>45</u>	<u>24469</u>	<u>14900</u>	<u>9569</u>	<u>404061</u>	<u>250817</u>
(Crushing Season)	45	30354	18632	11722	480241	305510
(Non-Crushing Season)	45	18583	11168	7415	327881	156664
2017-18	<u>45</u>	<u>26874</u>	<u>16910</u>	<u>9964</u>	<u>588807</u>	<u>325440</u>
(Crushing Season)	45	31429	20009	11419	706001	393686
(Non-Crushing Season)	45	22318	13810	8507	471613	257195
2018-19	<u>45</u>	<u>28234</u>	<u>18208</u>	<u>10226</u>	<u>720481</u>	<u>406815</u>
(Crushing Season)	45	32495	21556	10939	794668	459287
(Non-Crushing Season)	45	25190	15817	9373	667492	369336
2019-20	<u>45</u>	<u>19599</u>	<u>12795</u>	<u>6834</u>	<u>419356</u>	<u>265765</u>
(Crushing Season)	45	31689	21217	10472	722697	285965
(Non-Crushing Season)	45	22940	15223	9373	7717	507681
2020-21	<u>44</u>	<u>27571</u>	<u>17326</u>	<u>10245</u>	<u>616305</u>	<u>359633</u>
(Crushing Season)	44	33603	21507	12096	692380	424448
(Non-Crushing Season)	44	21538	13145	8393	540231	294819
2021-22	<u>44</u>	<u>28202</u>	<u>17665</u>	<u>10537</u>	<u>680443</u>	<u>439798</u>
(Crushing Season)	44	34807	21899	12908	760582	504374
(Non-Crushing Season)	44	21597	13430	8167	600255	375223
(Jul: – Sep:)	<u>44</u>	<u>18474</u>	<u>10998</u>	<u>7476</u>	<u>589673</u>	<u>363342</u>
Jul:	44	19071	11924	7147	605819	394717
Aug:	44	18225	10540	7685	583200	347820
Sep:	44	18125	10530	7595	580000	347490

*= Monthly average over the three months/ crushing/Non crushing season.

PERFORMANCE OF CIGARETTES INDUSTRY

Report for the month of September 2022

Coverage

This report covers three (03) Cigarettes factories of the Punjab.

Production

The production of Cigarettes during the month was 1425 Million Nos. Which was 5.9% higher than August 2022.

Sale and Stock

Sale of Cigarettes during the month was 1577 Million Nos. Which was 7.1% higher than August 2022.

Employment

Total employment in these factories during the month was 643, which was 0.6% higher the last month. Out of this total employment, 444 were production workers. Total wages/salaries for the month were amounted to Rs.65.6 Millions.

PRODUCTION OF CIGARETTES

July 2021 to September 2022

(Millions Nos.)

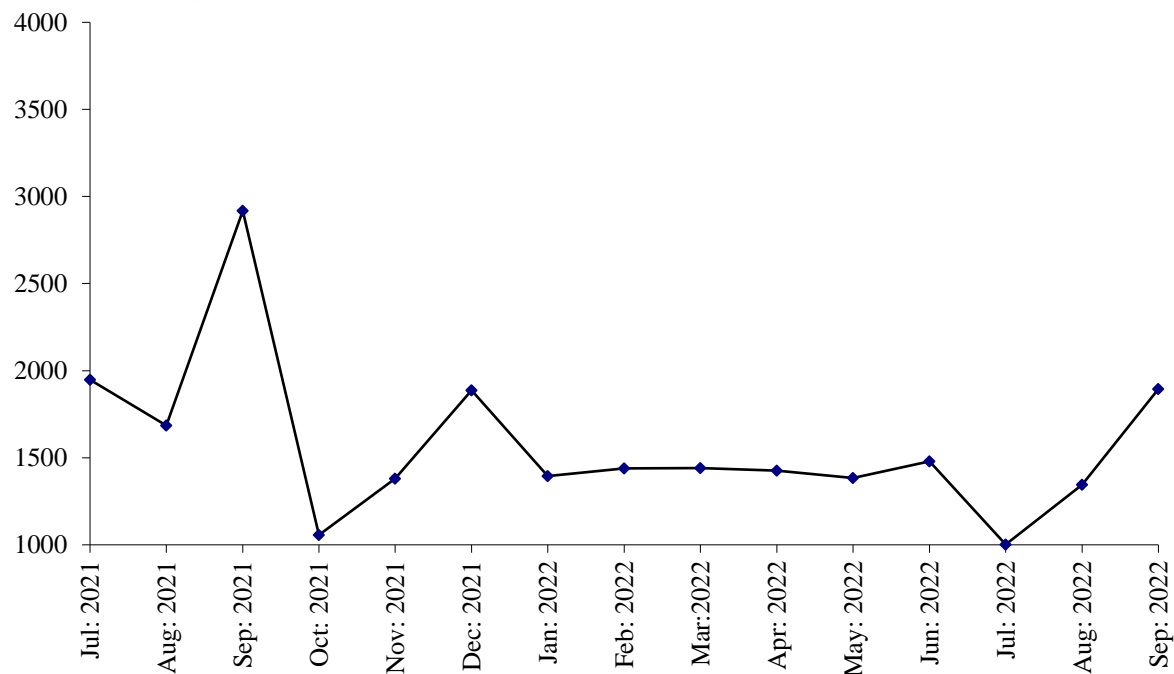


Table No.21 MANUFACTURING ACTIVITY OF CIGARETTES INDUSTRY.

Year (July-June)/ Month	No. Of Reporting Units	PRODUCTION, SALE & STOCK OF CIGARETTES (Million Nos.)			EMPLOYMENT* (Nos.)		WAGES/SALARIES (‘000’Rs.)	
		Production	Sale	Stock at the end	Total	Production Workers	Total	Production Workers
2006-07	3	29901.9	29642.1	1297.5	1398	1272	18278	14591
2007-08	3	34987.2	35762.5	510	1364	1238	22291	16829
2008-09	3	43058.0	42901.0	667	1307	1089	23946	18512
2009-10	3	37296.0	36987.0	976	1269	1136	26379	20638
2010-11	3	37944	37420	1500	1178	1051	28432	25294
2011-12	3	34955	35961	494	998	898	32942	29936
2012-13	3	37845	37996	343	907	811	27023	22214
2013-14	3	33094	24934	8503	904	797	27781	22032
2014-15	3	33966	38328	4141	905	793	32807	24413
2015-16	3	27502	29914	1729	808	707	33019	24855
2016-17	3	28452	274135	3046	603	509	33264	25008
2017-18	3	28324	30503	867	509	425	32139	23057
2018-19	3	35850	27486	9231	552	446	36978	21686
2019-20	3	25634	21861	13234	640	493	45641	20945
2020-21	3	21353	19306	15124	657	494	50439	21564
2021-22	3	19438	19013	15549	658	490	55998	24776
(Jul: - Sep:)	<u>3</u>	<u>6552</u>	<u>5102</u>	<u>16574</u>	<u>657</u>	<u>484</u>	<u>51902</u>	<u>21686</u>
Jul:	3	1948	1481	15591	656	484	49056	21725
Aug:	3	1686	1296	15981	656	484	53974	21576
Sep:	3	2918	2325	16574	658	485	52676	21758
Oct:	3	1057	1421	16210	659	485	52676	21758
Nov:	3	1380	1292	16298	673	520	53886	22158
Dec:	3	1887	1709	16476	673	520	53886	23828
Jan:	3	1394	1401	16469	676	523	53988	28872
Feb:	3	1439	1693	16215	678	524	53988	28872
Mar:	3	1441	1335	16321	651	512	53721	28637
Apr:	3	1426	1836	15911	645	507	64190	25367
May	3	1383	1793	15501	636	472	65089	25367
Jun:	3	1479	1431	15549	633	358	64846	27353
<u>2022-23</u>								
(Jul:- Sep:)	<u>3</u>	<u>3773</u>	<u>4600</u>	<u>14722</u>	<u>637</u>	<u>423</u>	<u>64916</u>	<u>28760</u>
Jul:	3	1002	1551	15000	630	372	63984	25377
Aug:	3	1346	1472	14874	639	444	65178	30192
Sep:	3	1425	1577	14722	643	452	65586	30736

* = Monthly Average over the three months.

PERFORMANCE OF CEMENT INDUSTRY

Report for the month of September 2022

Coverage

This report covers twelve (12) factories in the Punjab.

Production of Clinker

The cement factories produced 1476615 Metric Tons of Clinker during September 2022, which was 43.7% higher than the last month. The factories consumed 1777019 Metric Tons of Clinker to produce Cement.

Production of Cement

The cement factories produced 2052463 Metric Tons of Cement during the month, which was 28.0% higher than the last month.

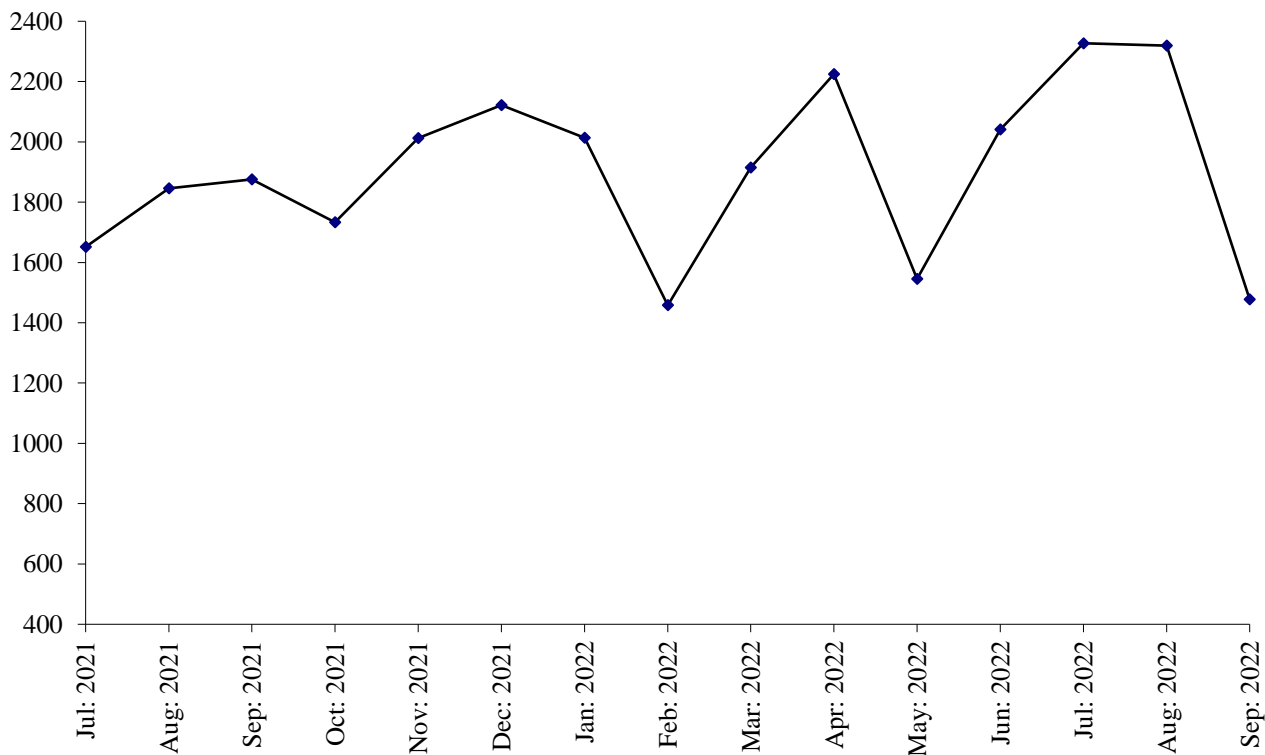
Employment

Total employment in the factories as reported was 7426 which is almost same as the last month. Out of this total employment, 4700 were production workers. Total wages/salaries for the month under report were 673.5 Million Rupees.

PRODUCTION OF CLINKER

July 2021 to September 2022

(000 M. Tons)



PRODUCTION OF CEMENT

July 2021 to September 2022

(000 M. Tons)

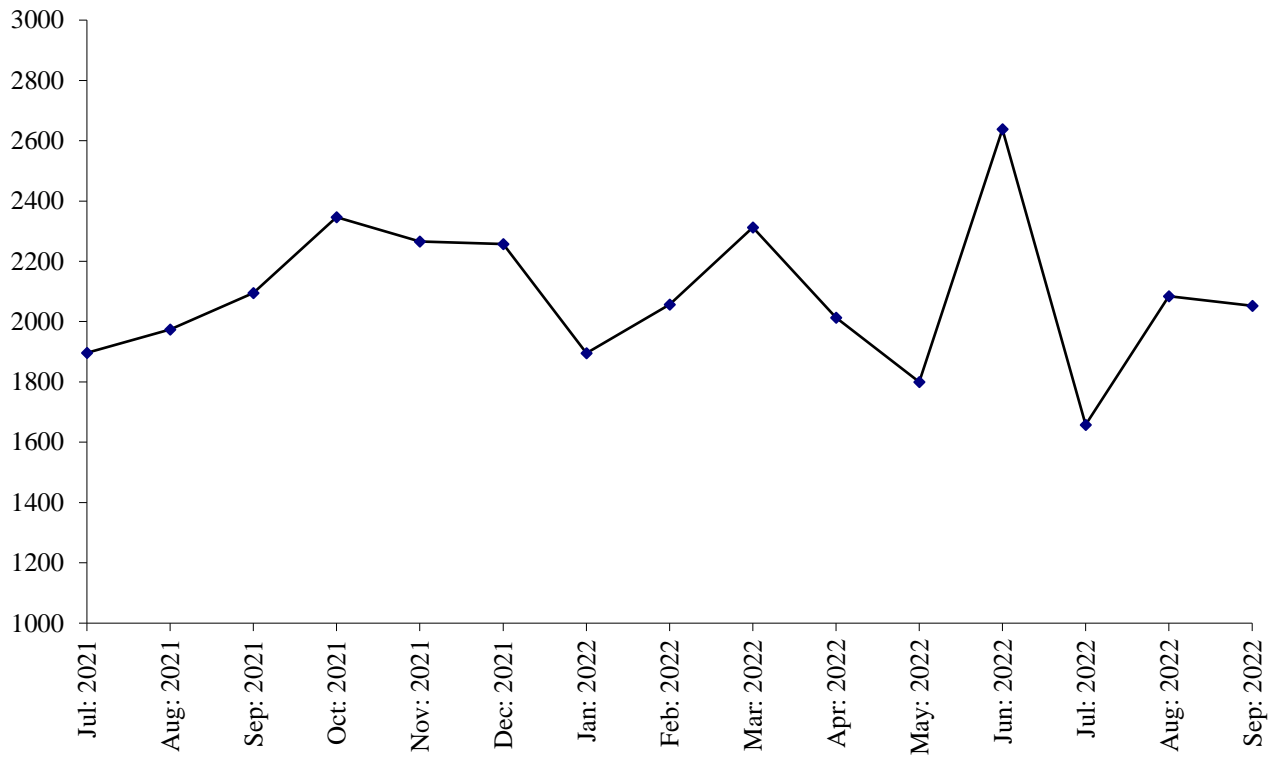


Table No.22 DETAIL OF PRODUCTION, CONSUMPTION AND STOCK OF CLINKER.

(M.Tons)

Year (July-June)/ Month	No. Of reporting Units	Stock at the Beginning	Production	Consumption	Stock at the end
2006-07	12	372278	8573452	8533162	412569
2007-08	13	412569	10403031	10417823	397777
2008-09	13	397777	14275929	13996684	677022
2009-10	13	677022	15438372	15593172	522222
2010-11	13	522222	14340746	13920004	942964
2011-12	13	942964	13937197	13851368	1028793
2012-13	12	1028793	15210981	14730923	1508851
2013-14	12	1508851	15780981	15535319	1754513
2014-15	12	1754513	15926314	15853807	1827020
2015-16	12	1827020	15973852	17140392	660480
2016-17	12	660480	19101688	18498074	1264094
2017-18	12	1264094	20080615	19767345	1577364
2018-19	12	1577364	18892935	18992061	1478238
2019-20	12	1478238	19838457	19197793	2118902
2020-21	12	2118902	21735282	21668097	2186087
2021-22	12	2186087	22442834	22377411	2251510
(Jul: – Sep:)	<u>12</u>	<u>2186087</u>	<u>5374578</u>	<u>4896936</u>	<u>2663729</u>
Jul:	12	2186087	1652107	1531086	2307108
Aug:	12	2307108	1846363	1612070	2541401
Sep:	12	2541401	1876108	1753780	2663729
Oct:	12	2663729	1733236	2009680	2387285
Nov:	12	2387285	2011603	2197532	2201356
Dec:	12	2201356	2121533	2112822	2210067
Jan:	12	2210067	2014331	1727433	2496965
Feb:	12	2496965	1457714	1887601	2067078
Mar:	12	2067078	1915494	2084743	1897829
Apr:	12	1897829	2225288	1703171	2419946
May:	12	2419946	1547777	1522494	2445229
Jun:	12	2445229	2041280	1920897	2565612
<u>2022-23</u>					
(Jul: – Sep:)	<u>12</u>	<u>2251510</u>	<u>4592617</u>	<u>4611716</u>	<u>2232411</u>
Jul:	12	2251510	2088489	1370038	2969961
Aug:	12	2969961	1027513	1464659	2532815
Sep:	12	2532815	1476615	1777019	2232411

Table No.23 DETAIL OF PRODUCTION, SALE AND STOCK OF CEMENT

(M.Tons)

Year (July- June)/ Month	No. Of Reporting Units	Stock at the beginning	Production	S O L D			Stock at the end
				Total	Within country	Expor- ted	
2006-07	12	57012	8882277	8793994	8793994	-	145295
2007-08	13	145295	10713689	10767713	10767713	-	91271
2008-09	13	91271	14227580	14068486	14068486	-	250365
2009-10	13	250365	16951531	16973086	16973086	-	228810
2010-11	13	228810	14685518	14528966	14528966	-	385362
2011-12	13	385362	15269328	15299852	15299852	-	354838
2012-13	12	354838	15929819	15922363	15922363	-	362294
2013-14	12	362294	16668915	16472689	16472689	-	558520
2014-15	12	558520	17175158	17358446	17358446	-	375232
2015-16	12	375232	18479957	18588721	18588721	-	266468
2016-17	12	266468	19569160	19445145	19445145	-	390483
2017-18	12	390483	22067871	22188484	22188484	-	269870
2018-19	12	269870	21077461	20903996	20903996	-	443335
2019-20	12	443335	20386575	20021979	20021979	-	807931
2020-21	12	807931	24535481	24360442	24360442	-	982970
2021-22	12	982970	25551134	25220928	25220928	-	1313176
<u>(Jul: – Sep:)</u>	<u>12</u>	<u>982970</u>	<u>5965810</u>	<u>5778387</u>	<u>5778387</u>	<u>-</u>	<u>1170393</u>
Jul:	12	982970	1896820	1759516	1759516	-	1120274
Aug:	12	1120274	1974246	1929710	1929710	-	1164810
Sep:	12	1164810	2094744	2089161	2089161	-	1170393
Oct:	12	1170393	2346177	2283767	2283767	-	1232803
Nov:	12	1232803	2265548	2235177	2235177	-	1263174
Dec:	12	1263174	2256806	2247223	2247223	-	1272757
Jan:	12	1272757	1894814	1839850	1839850	-	1327721
Feb:	12	1327721	2057450	2076809	2076809	-	1308362
Mar:	12	1308362	2312804	2411977	2411977	-	1209189
Apr:	12	1209189	2013261	1985888	1985888	-	1236562
May:	12	1236562	1800109	1721343	1721343	-	1315328
Jun:	12	1315328	2638355	2640507	2640507	-	1313176
<u>2022-23</u>							
<u>(Jul: – Sep:)</u>	<u>12</u>	<u>1313176</u>	<u>4945006</u>	<u>4949926</u>	<u>4949926</u>	<u>-</u>	<u>1308256</u>
Jul:	12	1313176	1288682	1186775	1186775	-	1415083
Aug:	12	1415083	1603861	1710889	1710889	-	1308055
Sep:	12	1308055	2052463	2052262	2052262	-	1308256

Table No.24 EMPLOYMENT AND WAGES/SALARIES OF CEMENT INDUSTRY

Year (July-June)/ Month	No. Of Reporting Units	EMPLOYMENT (No)*			WAGES/SALARIES (000 Rs.)	
		Total	Production Workers	Non-Production Workers	Total	Production Workers
2006-07	12	4950	2839	2111	62364	28354
2007-08	13	5429	3200	2229	113212	54248
2008-09	13	5858	3906	1952	137089	755759
2009-10	13	6272	4292	1980	157409	80564
2010-11	13	6713	4631	2082	177979	94502
2011-12	13	6614	4729	1885	195861	115717
2012-13	12	6463	4591	1872	226498	135792
2013-14	12	6593	4648	1945	241852	140576
2014-15	12	6767	4817	1950	301847	178187
2015-16	12	7046	5009	2037	384190	222124
2016-17	12	7627	5178	2448	521509	292515
2017-18	12	8033	5262	2771	729712	399586
2018-19	12	8077	5360	2717	668155	384602
2019-20	12	7988	5400	2588	634682	387052
2020-21	12	7912	5328	2583	661961	405863
2021-22	12	7966	5317	2649	717914	438054
(Jul: – Sep:)	<u>12</u>	<u>8166</u>	<u>5594</u>	<u>2572</u>	<u>731198</u>	<u>459940</u>
Jul:	12	8210	5620	2590	707723	445546
Aug:	12	8170	5593	2577	744994	468152
Sep:	12	8117	5568	2549	748078	466123
Oct:	12	8115	5567	2548	749369	473170
Nov:	12	8101	5561	2540	750353	472517
Dec:	12	8218	5499	2719	763646	471320
Jan:	12	8065	5357	2708	740527	456321
Feb:	12	8059	5358	2701	739443	455027
Mar:	12	7725	5033	2692	675027	395887
Apr:	12	7705	5002	2703	673907	391614
May:	12	7563	4866	2697	663063	381770
Jun:	12	7575	4881	2694	666032	379198
<u>2022-23</u>						
(Jul: – Sep:)	<u>12</u>	<u>7434</u>	<u>4698</u>	<u>2736</u>	<u>669797</u>	<u>373977</u>
Jul:	12	7449	4695	2754	662075	371559
Aug:	12	7426	4699	2727	673867	375353
Sep:	12	7426	4700	2726	673448	375018

* = Monthly average over the three months.

PERFORMANCE OF FERTILIZER INDUSTRY

Report for the month of September 2022

Coverage

This report covers Seven (07) fertilizer factories in the Punjab Province.

Production

These factories produced 292779 Metric Tons of Urea, 419 Metric Tons of Super Phosphate, 71617 Metric Tons of Amm. Nitrate and 73067 Metric Tons of Nitro Phosphate. The overall production of Fertilizer during the month was 13.7% higher than the last month.

Sale and Stock

These fertilizer factories reported a sale of 283832 Metric Tons of Urea, 419 Metric Tons of Super phosphate, 66065 Metric Tons of Amm. Nitrate and 71495 Metric Tons of Nitro Phosphate. The stock of Urea, Super Phosphate, Amm. Nitre and Nitro Phosphate at the end of the month was 47107, 6411, 10350 and 4583 Metric Tons respectively.

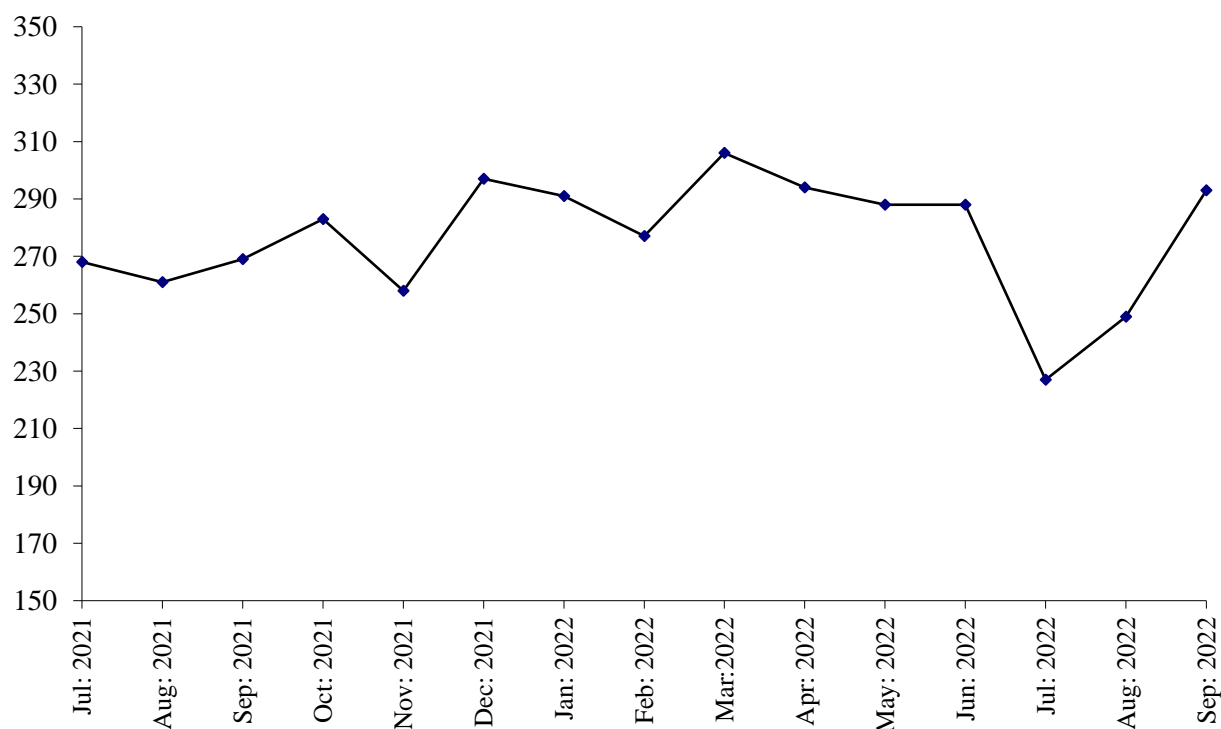
Employment and Wages/Salaries

Total employment during the month was 5541 which is. 0.1% higher than the last month. Out of this total employment 3738 were production workers. Total Wages/Salaries for the month under report were amounted to 965.4 Million Rupees.

PRODUCTION OF UREA

July 2021 to September 2022

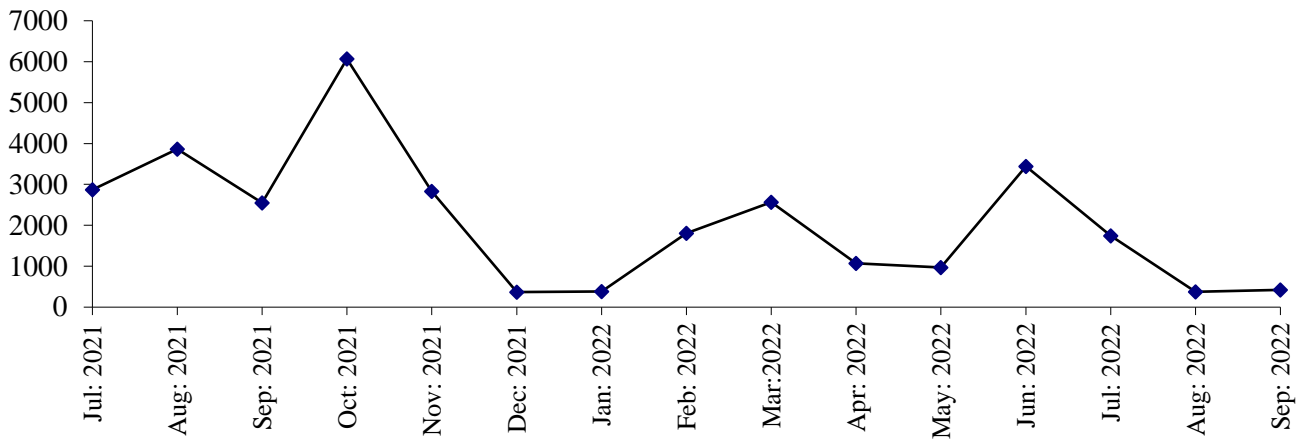
(000 M. Tons)



PRODUCTION OF SUPER PHOSPHATE

July 2021 to September 2022

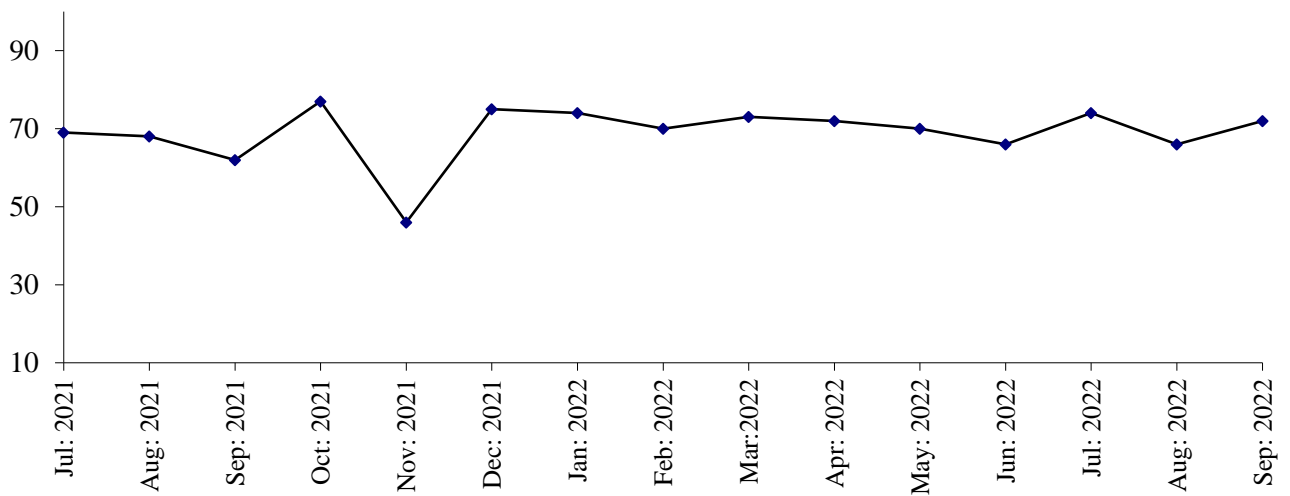
(000 M. Tons)



PRODUCTION OF AMM. NITRATE

July 2021 to September 2022

(000 M. Tons)



PRODUCTION OF NITRO PHOSPHATE

July 2021 to September 2022

(000 M. Tons)

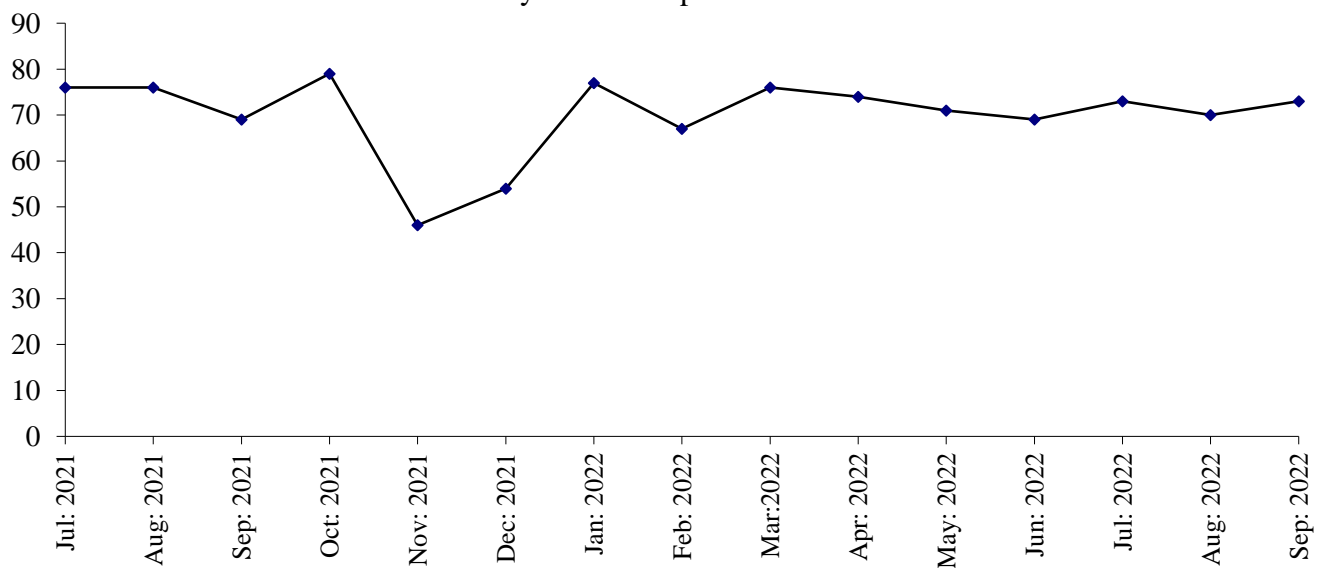


Table No: 25 DETAIL OF PRODUCTION, SALE AND STOCK OF UREA AND AMM. SULPHATE

(M. Tons)

Year (July-June)/ Month	U R E A			AMM. SULPHATE		
	Production	Sale	Stock at The end	Production	Sale	Stock at the end
2006-07	3267943	3024493	321843	-	-	-
2007-08	3274090	3553613	42320	-	-	-
2008-09	3377275	3404025	15570	-	-	-
2009-10	3431545	3374056	73059	-	-	-
2010-11	3016783	3064387	25455	-	-	-
2011-12	2750392	2701061	74786	-	-	-
2012-13	2592718	2639313	28191	-	-	-
2013-14	2582330	2539991	70530	-	-	-
2014-15	2459980	2505550	24960	-	-	-
2015-16	2856143	2392405	488698	-	-	-
2016-17	2808518	2895909	401307	-	-	-
2017-18	2987690	3367935	21062	-	-	-
2018-19	3181203	3133449	68816	-	-	-
2019-20	3201765	3251695	18886	-	-	-
2020-21	3268768	3132828	154826	-	-	-
2021-22	3381465	3514260	22031	-	-	-
(Jul: – Sep:)	<u>797460</u>	<u>896943</u>	<u>55343</u>	=	=	=
Jul:	267660	302833	119653	-	-	-
Aug:	260817	331466	49004	-	-	-
Sep:	268983	262644	55343	-	-	-
Oct:	283418	86286	252475	-	-	-
Nov:	258361	447787	63049	-	-	-
Dec:	296917	326311	33655	-	-	-
Jan:	290980	307983	16652	-	-	-
Feb:	277309	285466	8495	-	-	-
Mar:	305863	272439	41919	-	-	-
Apr:	294483	252489	83913	-	-	-
May	288282	245035	127160	-	-	-
Jun:	288392	393521	22031	-	-	-
<u>2022-23</u>						
(Jul: – Sep:)	<u>768909</u>	<u>743833</u>	<u>47107</u>	=	=	=
Jul:	227313	201455	47889	-	-	-
Aug:	248817	258546	38160	-	-	-
Sep:	292779	283832	47107	-	-	-

Table No:26 DETAIL OF PRODUCTION, SALE AND STOCK OF SUPER PHOSPHATE AND AMM. NITRATE
(M. Tons)

Year (July-June)/ Month	SUPER PHOSPHATE			AMM. NITRATE		
	Production	Sale	Stock at The end	Production	Sale	Stock at the end
2006-07	67236	63270	8104	330756	338854	5839
2007-08	83146	78492	12758	343728	349559	8
2008-09	89171	75025	26904	344334	339921	4421
2009-10	46952	56524	17332	345735	330963	19193
2010-11	126909	137940	6301	298029	307696	9526
2011-12	123294	90442	39153	228664	227808	10382
2012- 13	44638	42997	40794	26574	36898	58
2013-14	10081	29493	21382	119631	119539	150
2014-15	18706	25502	14586	113541	65804	47887
2015-16	28023	33404	9205	237844	169639	116092
2016-17	23815	9546	23474	226183	328008	14267
2017-18	1027	23807	694	553091	532829	34529
2018-19	18244	18828	110	456249	487629	3149
2019-20	9034	9122	22	548571	544771	6949
2020-21	31087	28244	2865	756461	762169	1241
2021-22	28780	25353	6292	821680	819768	3153
(Jul: – Sep:)	<u>9282</u>	<u>6509</u>	<u>5638</u>	<u>198772</u>	<u>198544</u>	<u>1469</u>
Jul:	2870	2378	3357	68776	67488	2529
Aug:	3860	1725	5492	67741	69099	1171
Sep:	2552	2406	5638	62255	61957	1469
Oct:	6067	10225	1480	77119	75720	2868
Nov:	2829	4231	78	45922	46639	2151
Dec:	369	421	26	75248	76887	512
Jan:	380	380	26	73840	73945	407
Feb:	1808	1133	701	69549	68599	1357
Mar:	2563	759	2505	73259	74081	535
Apr:	1072	625	2952	72051	72195	391
May	970	970	2952	69899	69764	526
Jun:	3440	100	6292	66021	63394	3153
<u>2022-23</u>						
(Jul: – Sep:)	<u>2539</u>	<u>2394</u>	<u>6437</u>	<u>211733</u>	<u>204536</u>	<u>10350</u>
Jul:	1742	1597	6437	74324	71321	6156
Aug:	378	378	6437	65792	67150	4798
Sep:	419	419	6437	71617	66065	10350

Table No: 27 DETAIL OF PRODUCTION, SALE AND STOCK OF NITRO PHOSPHATE.

(M.Tons)

Year (July-June)/ Month	Production	Sale	Stock at the end
2006-07	325826	357595	80
2007-08	329655	267704	62031
2008-09	305678	362938	4771
2009-10	304444	286441	22774
2010-11	265490	287894	370
2011-12	198799	198818	351
2012- 13	22109	22460	0
2013-14	122494	122478	16
2014-15	101171	93467	7720
2015-16	221059	228779	0
2016-17	274512	269570	4942
2017-18	455002	459944	0
2018-19	449667	449667	0
2019-20	624396	615632	8764
2020-21	845493	846511	7746
2021-22	835140	832990	9896
(Jul:- Sep:)	<u>221376</u>	<u>228976</u>	<u>9896</u>
Jul:	76427	77902	6271
Aug:	76358	79618	3011
Sep:	68591	71456	146
Oct:	78859	78514	491
Nov:	45976	46117	350
Dec:	53587	53823	114
Jan:	77414	62611	14917
Feb:	67126	66468	15575
Mar:	75747	78156	13166
April:	74267	77291	10112
May:	71404	75520	5996
June:	69384	65484	9896
<u>2022-23</u>			
(Jul: – Sep:)	<u>215957</u>	<u>207901</u>	<u>17952</u>
Jul:	72715	62971	19640
Aug:	70175	73435	16380
Sep:	73067	71495	17952

Table No: 28 EMPLOYMENT AND WAGES/SALARIES OF FERTILIZER INDUSTRY*

Year (July-June) / Month	No. Of Working Units	E M P L O Y M E N T (Nos.)*			WAGES/SALARIES (000 Rs.)	
		Total	Production Workers	Office Staff	Total	Production Workers
2006-07	6	4594	3221	1373	148034	93870
2007-08	6	4587	3277	1310	175821	113661
2008-09	5	4710	3316	1394	209439	132521
2009-10	5	4878	3388	1490	273098	166113
2010-11	6	5161	3496	1665	310502	181462
2011-12	6	5407	3671	1736	353344	207054
2012-13	6	5136	3469	1667	363237	210167
2013-14	6	4720	3121	1599	395486	224472
2014-15	6	5090	3015	2075	433858	222449
2015-16	6	5473	3070	2403	489752	235912
2016-17	6	5260	3045	2215	494139	260682
2017-18	7	6020	3616	2404	545307	287497
2018-19	7	6141	3663	2478	573893	295543
2019-20	7	5714	3443	2270	600079	321309
2020-21	7	5700	3590	2110	638195	355515
2021-22	7	5567	3647	1920	743477	417103
(Jul: - Sep:)	<u>7</u>	<u>5510</u>	<u>3573</u>	<u>1937</u>	<u>683507</u>	<u>384129</u>
Jul:	7	5481	3550	1931	725259	396900
Aug:	7	5520	3577	1943	678224	387504
Sep:	7	5529	3593	1936	647039	367985
Oct:	7	5558	3628	1930	633817	360129
Nov:	7	5630	3701	1929	642225	369056
Dec:	7	5603	3683	1920	632104	360027
Jan:	7	5564	3658	1906	649302	374987
Feb:	7	5562	3633	1929	643316	365090
Mar:	7	5639	3723	1916	1003967	522587
Apr:	7	5581	3708	1873	1078631	643434
May	7	5591	3681	1910	794263	429295
Jun:	7	5540	3625	1915	793551	428244
<u>2022-23</u>						
(Jul: – Sep:)	<u>7</u>	<u>5548</u>	<u>3631</u>	<u>1917</u>	<u>909742</u>	<u>503069</u>
Jul:	7	5570	3420	2150	800181	435263
Aug:	7	5534	3736	1798	963632	535843
Sep:	7	5541	3738	1803	965414	538102

* = Monthly averages over the three months.

PERFORMANCE OF FOOTWEAR INDUSTRY

Report for the month of September 2022

Coverage

This report covers Forty One (41) factories of Footwear Industry in the Punjab Province.

Production

The factories produced 2509 thousand Pairs of Footwear during the current month, which was 4.0% lower than the previous month.

Employment

Total employment in these factories during the current month was 12014, 2.0% lower than the previous month. Out of this total employment, 9306 were production workers.

PRODUCTIN OF FOOTWEAR

July 2021 to September 2022

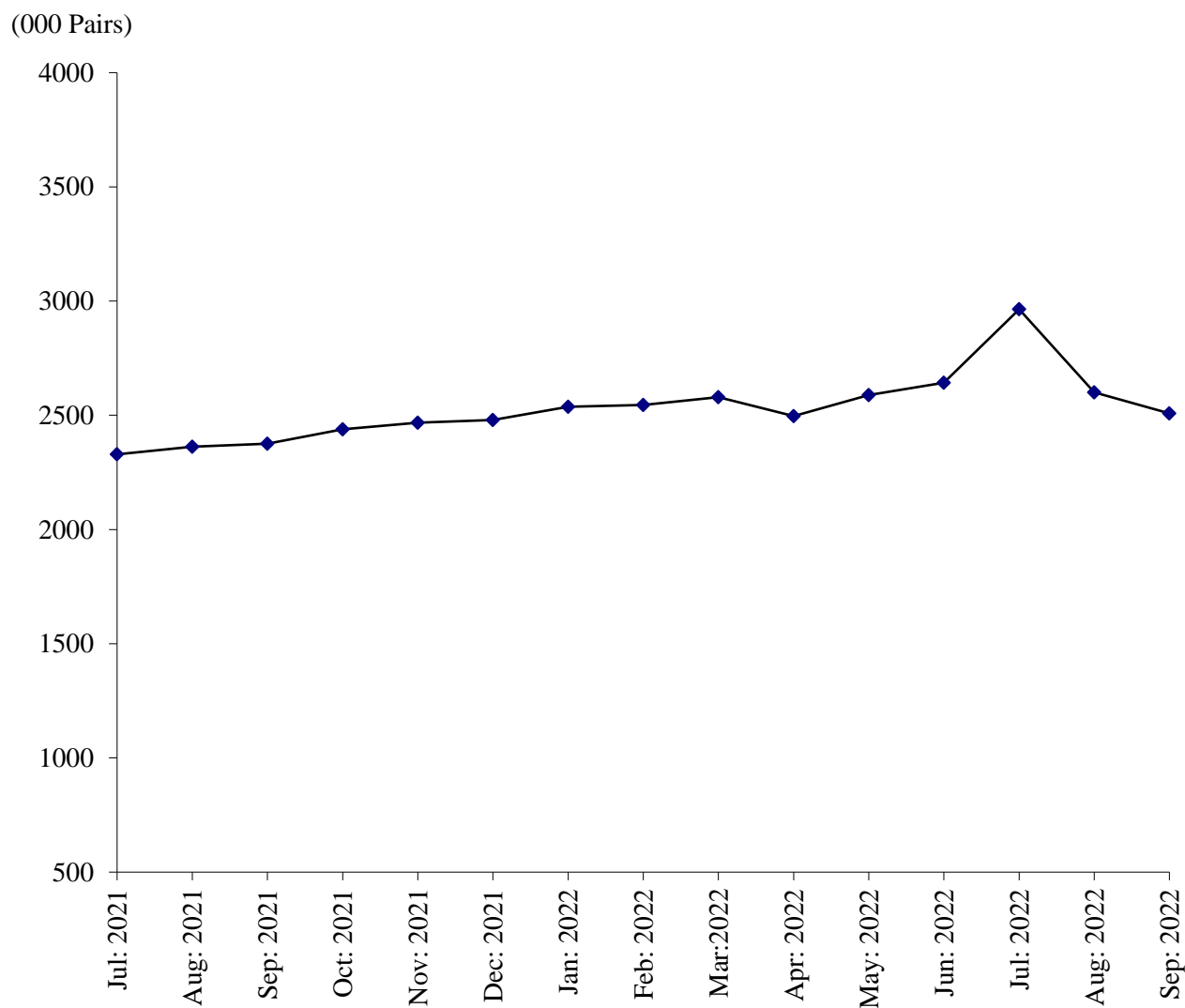


Table No.29 MANUFACTURING ACTIVITY OF FOOTWEAR INDUSTRY

Year (July-June)/ Month	No. Of Reporting Units	Production Of Footwear (000) Pairs)	EMPLOYMENT (NOS.) *	
			Total	Production Workers
2006-07	16	24628	8948	7507
2007-08	16	26865	8592	6928
2008-09	16	30979	8521	7038
2009-10	16	34817	8667	7152
2010-11	40	41008	9699	8116
2011-12	40	41944	9719	8535
2012-13	40	43232	9997	8536
2013-14	40	45030	9967	7937
2014-15	40	55136	9523	7398
2015-16	40	60462	10350	7959
2016-17	41	45476	9778	7401
2017-18	41	37411	9758	7477
2018-19	41	38805	9844	7783
2019-20	41	37860	10346	8451
2020-21	41	25658	10158	7745
2021-22	41	29843	11939	9145
(Jul: – Sep:)	<u>41</u>	<u>7068</u>	<u>11555</u>	<u>8873</u>
Jul:	41	2329	11398	8737
Aug:	41	2363	11624	8935
Sep:	41	2376	11642	8948
Oct:	41	2439	11891	9178
Nov:	41	2467	11907	9192
Dec:	41	2480	11925	9195
Jan:	41	2537	12085	9206
Feb:	41	2545	12092	9209
Mar:	41	2580	12104	9237
Apr:	41	2496	11957	9190
May	41	2588	12164	9219
June	41	2643	12484	9489
<u>2022-23</u>				
(Jul: – Sep:)	<u>41</u>	<u>8074</u>	<u>12239</u>	<u>9368</u>
July	41	2964	12468	9476
Aug:	41	2601	12235	9322
Sep:	41	2509	12014	9306

* = Monthly Average over the three months.

PERFORMANCE OF LEATHER TANNING INDUSTRY

Report for the month of September 2022

Coverage

The report for the month covers one Hundred and Six (106) Tanneries working in the Punjab Province.

Production

These Tanneries produced 812 thousand Sq. Mtrs. of Upper Leather and 16 M. Tons of Sole Leather during the current month. The Production of Upper Leather during the month was 1.0% higher than the previous month.

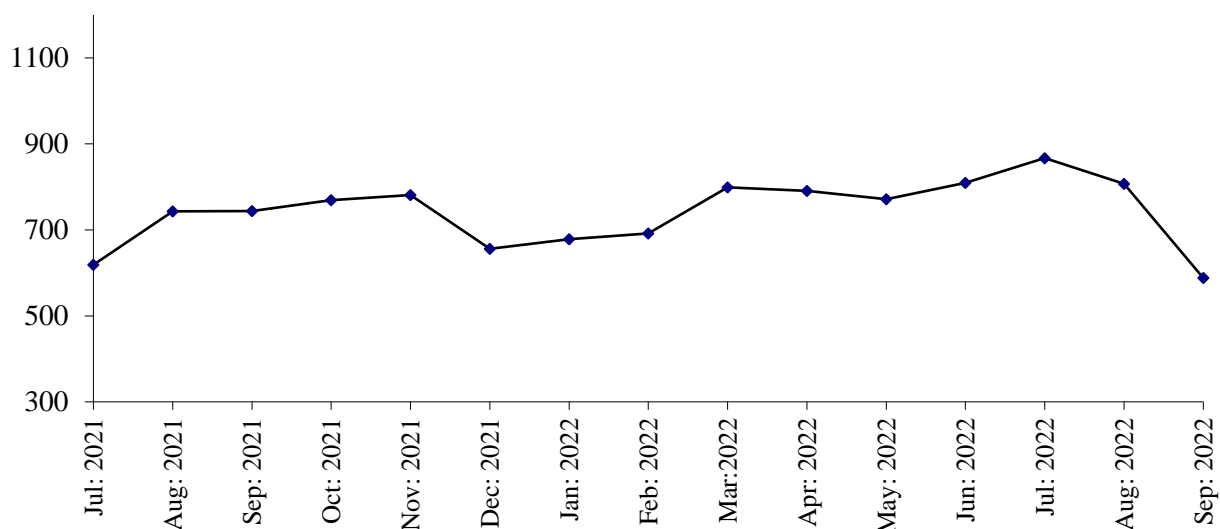
Employment

Total employment in these factories was 2215 persons which was same as the last month. Out of this total employment 1605 persons were production workers.

PRODUCTION OF UPPER LEATHER

July 2021 to September 2022

(000 Sq. Mtrs)



PRODUCTION OF SOLE LEATHER

July 2021 to September 2022

(000 M. Tons)

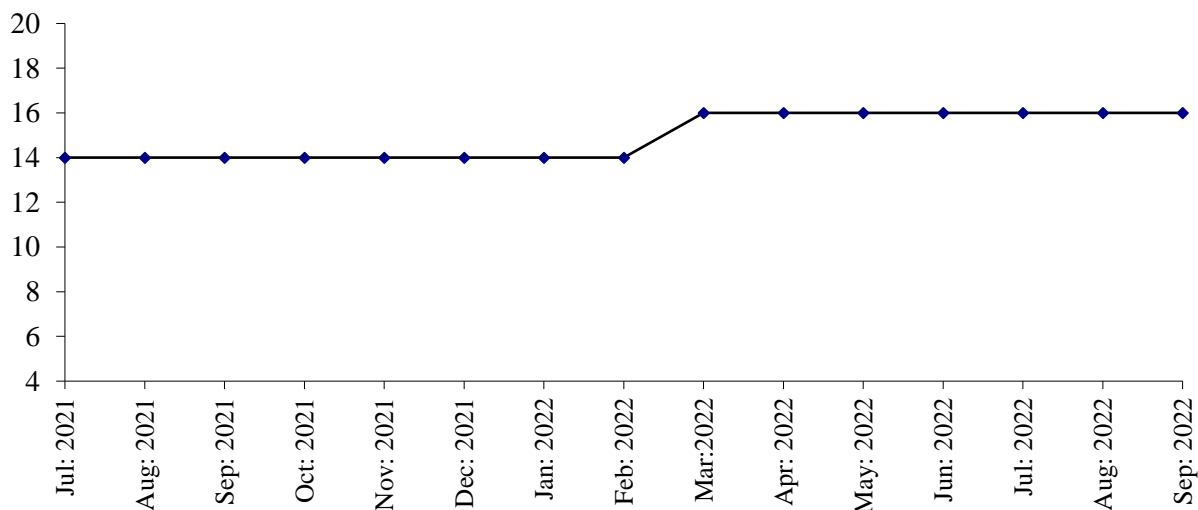


Table No: 30: MANUFACTURING ACTIVITY OF LEATHER TANNING INDUSTRY

Year (July-June) / Month	No. Of Reporting Units	P R O D U C T I O N		EMPLOYMENT (NOS.) *	
		Upper Leather (000 Sq. Mtrs)	Sole Leather (M. Tons)	Total	Production Workers
2006-07	19	5078	126	1296	950
2007-08	19	5833	99	1294	919
2008-09	19	5980	156	1195	910
2009-10	60	10465	215	1711	1325
2010-11	100	12999	381	2234	1813
2011-12	100	11154	417	2133	1709
2012-13	100	10169	356	1824	1318
2013-14	100	10766	287	2404	1703
2014-15	100	10071	241	2539	1821
2015-16	100	9563	198	2550	1935
2016-17	106	10330	156	2956	2174
2017-18	107	11150	168	3071	2248
2018-19	107	11045	168	2938	2135
2019-20	108	9340	168	2787	2006
2020-21	108	7956	168	2467	1755
2021-22	106	8852	176	2261	1591
(Jul: – Sep:)	<u>106</u>	<u>2106</u>	<u>42</u>	<u>2438</u>	<u>1736</u>
Jul:	106	619	14	2489	1778
Aug:	106	743	14	2409	1725
Sept:	106	744	14	2417	1705
Oct:	106	769	14	2383	1694
Nov:	106	781	14	2398	1701
Dec:	106	656	14	2129	1428
Jan:	106	678	14	2138	1441
Feb:	106	692	14	2194	1489
Mar:	106	799	16	2195	1492
Apr:	106	791	16	2155	1564
May	106	771	16	2067	1511
Jun:	106	809	16	2154	1567
<u>2022-23</u>					
(Jul: – Sep:)	<u>106</u>	<u>2486</u>	<u>48</u>	<u>2224</u>	<u>1613</u>
Jul:	106	867	16	2243	1629
Aug:	106	807	16	2215	1605
Sep:	106	812	16	2215	1605

* = Monthly average over the three months.

PERFORMANCE OF PAPER & PAPER BOARD INDUSTRY

Report for the month of September 2022

Coverage

This report covers forty seven (47) factories of Paper & Paper Board Industries in the Punjab Province.

Production

Forty eight factories produced 18570 Metric Tons of paper, which comprises of 7251 Metric Tons of writing, 5830 Metric Tons of printing and 5489 Metric Tons of packing and other 40112 Metric Tons of paper board during the month. The production of paper and paper board was 3.6% higher and 0.9% higher than the last month respectively.

Employment

Total employment during the month was 5090 persons, which was same as the last month. Out of this total employment, 3625 were production workers.

PRODUCTION OF PAPER & PAPER BOARD

July 2021 to September 2022

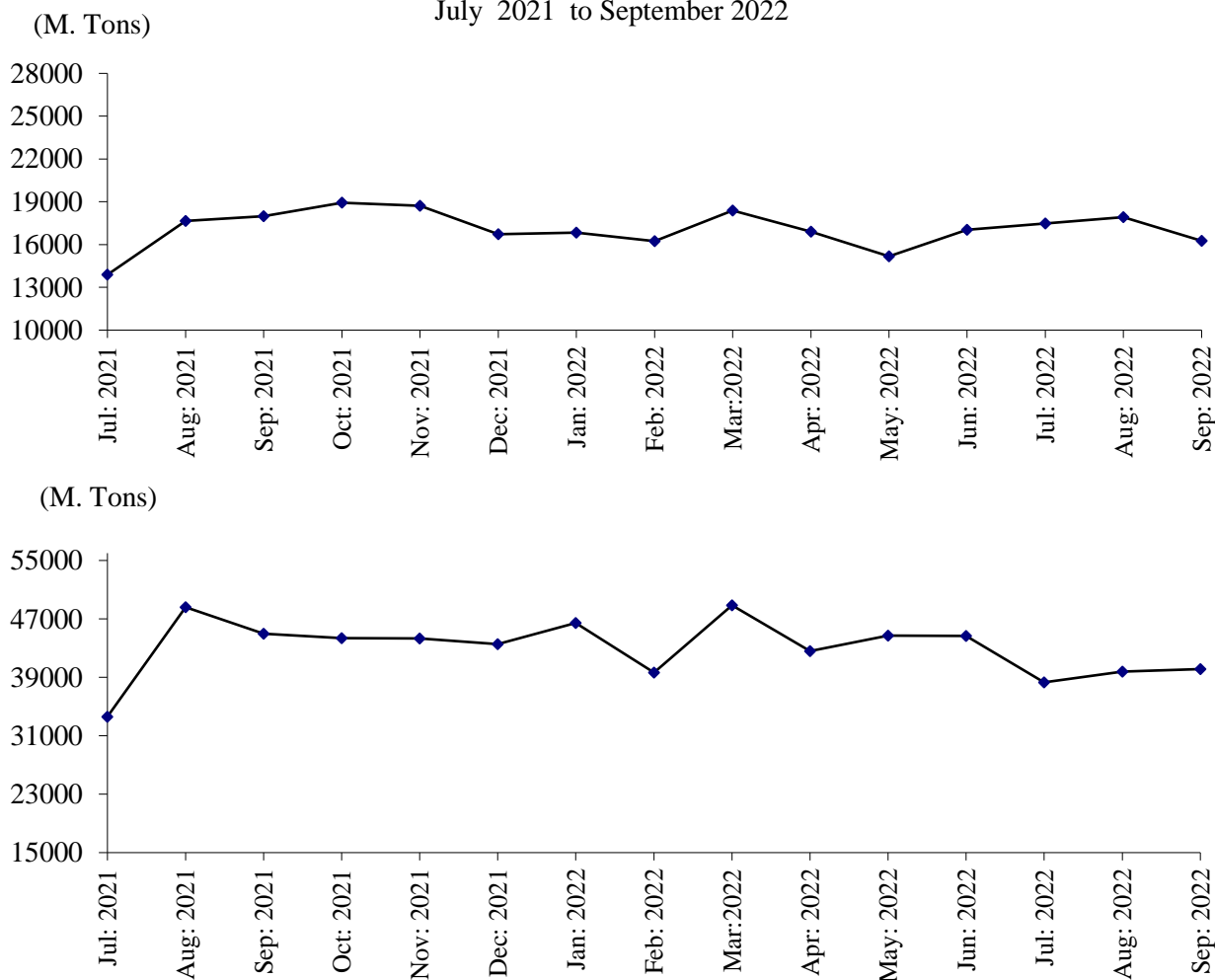


Table No: 31 MANUFACTURING ACTIVITY OF PAPER & PAPER BOARD INDUSTRY.

Year (July-June)/ Month	No. Of Reporting Units	P R O D U C T I O N (M.Tons)			EMPLOYMENT (NOS.) *	
		Paper	Paper Board	Paper & Paper Board	Total	Production Workers
2006-07	34	149972	276010	425982	4975	3983
2007-08	34	180162	223883	404045	5532	4218
2008-09	34	244838	165797	410635	5835	4845
2009-10	41	240775	165269	406044	5398	4178
2010-11	41	220587	194084	414671	5787	3945
2011-12	41	236217	287645	523862	5403	3539
2012-13	43	218980	376138	595118	5702	3774
2013-14	43	205252	457794	663046	6031	4053
2014-15	46	190193	407658	597851	6086	4370
2015-16	50	219040	370427	589467	6169	4629
2016-17	49	226251	398950	625201	6065	4614
2017-18	48	237723	451717	689440	6130	4570
2018-19	47	225544	429716	655260	5567	4052
2019-20	47	220495	441640	662135	5112	3683
2020-21	47	191962	488542	680504	5101	3660
2021-22	47	204434	526353	730787	5026	3600
(Jul: – Sep:)	<u>47</u>	<u>49511</u>	<u>127177</u>	<u>176688</u>	<u>5026</u>	<u>602</u>
Jul:	47	13887	33616	47503	5026	3605
Aug:	47	17645	48583	66228	5028	3603
Sep:	47	17979	44978	62957	5024	3598
Oct:	47	18930	44353	63283	5026	3602
Nov:	47	18720	44326	63046	5029	3604
Dec:	47	16718	43548	60266	5034	3610
Jan:	47	16829	46459	63288	5036	3616
Feb:	47	16240	39653	55893	5025	3600
Mar:	47	18377	48858	67235	5019	3591
Apr:	47	16900	42580	59480	5021	3585
May	47	15170	44714	59884	5018	3585
Jun:	47	17039	44685	61724	5026	3595
<u>2022-23</u>						
(Jul: – Sep:)	<u>47</u>	<u>53979</u>	<u>118499</u>	<u>172478</u>	<u>5072</u>	<u>3615</u>
Jul:	47	17481	38625	56106	5036	3596
Aug:	47	17928	39762	57690	5090	3625
Sep:	47	18570	40112	58682	5090	3625

* = Monthly average over the three months.

PERFORMANCE OF LIGHT ENGINEERING INDUSTRY

Report for the month of September 2022

RE-ROLLED STEEL

Coverage

This report covers Forty One (41) factories of Re-Rolled Steel in the Punjab Province.

Production

Forty one factories covered under the survey produced 25017 Metric Tons of steel bars/angles during September 2022, which was 2.5% higher than the last month.

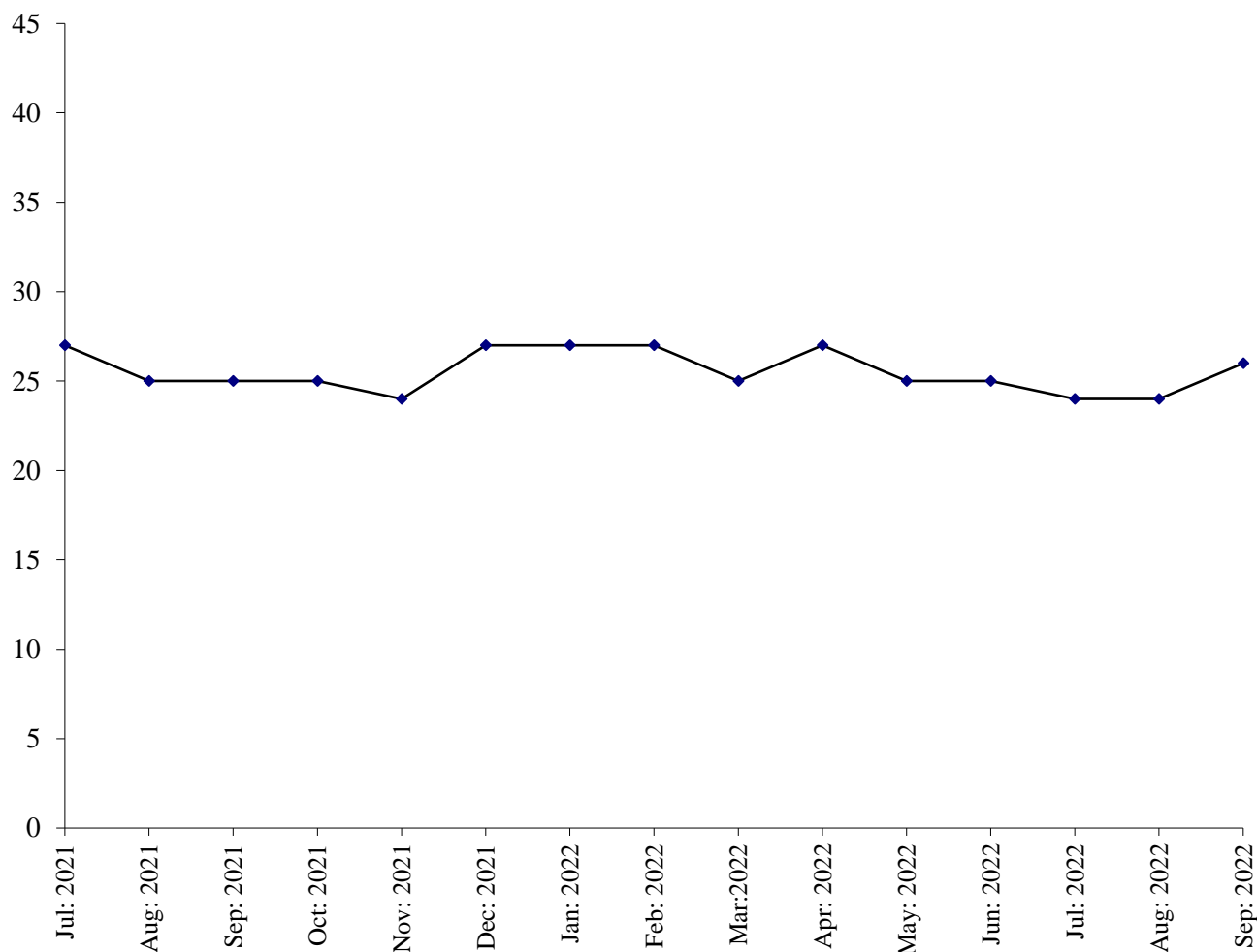
Employment

Total employment in the industry during the month was 1097, which was 2.8% higher than the last month. Out of this total employment, 784 were production workers.

PRODUCTION OF RE-ROLLED STEEL

July 2021 to September 2022

(000 M. Tons)



BICYCLES

Coverage

This report covers three (3) factories of Bicycles in the Punjab.

Production

Three factories being covered in the survey manufactured and assembled 12519 complete bicycles during September 2022, which was 3.7% lower than the last month.

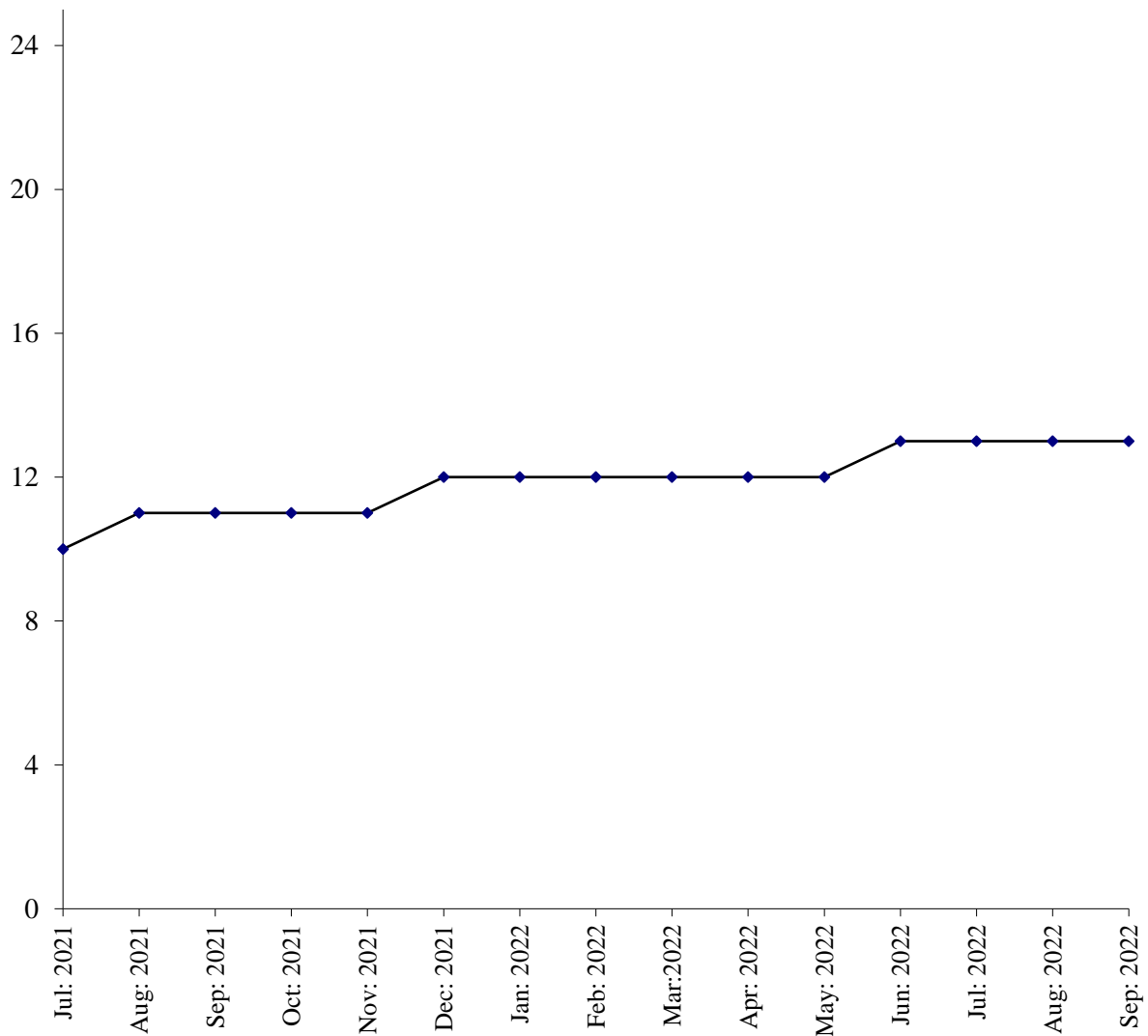
Employment

Total employment in these factories during the month was 686, which was same as the last month. Out of this total employment, 527 were production workers.

PERFORMANCE OF BICYCLES

July 2021 to September 2022

(000 M. Tons)



ELECTRIC FANS

Coverage

This report covers one hundred and twenty six (126) factories of Electric Fans in the Punjab Province.

Production

One hundred and twenty six factories covered under the survey manufactured 174917(ceiling fans, 102143 pedestal fans, 35914 and other fans 86860) during September, 2022, which was 17.1% lower than the last month.

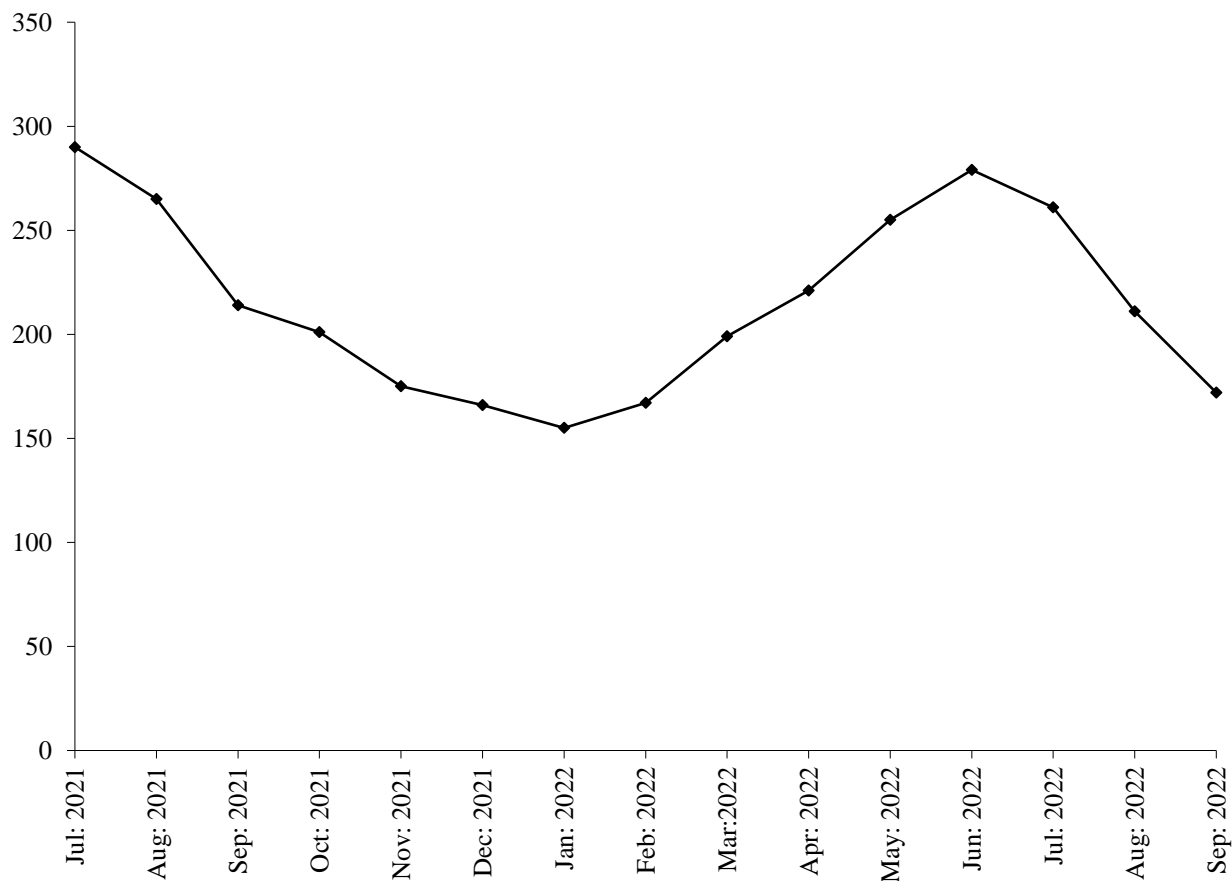
Employment

These factories reported 2144 total employment during the month, which was 2.0% lower than the last month. Out of this total employment, 1871 were production workers.

PERFORMANCE OF ELECTRIC FANS

July 2021 to September 2022

(000 Nos.)



ELECTRIC MOTORS

Coverage

This report covers thirty (30) factories of Electric Motors in the Punjab Province.

Production

Thirty factories covered under the survey manufactured 1621 electric motors during the month, which was 7.7% lower than the last month.

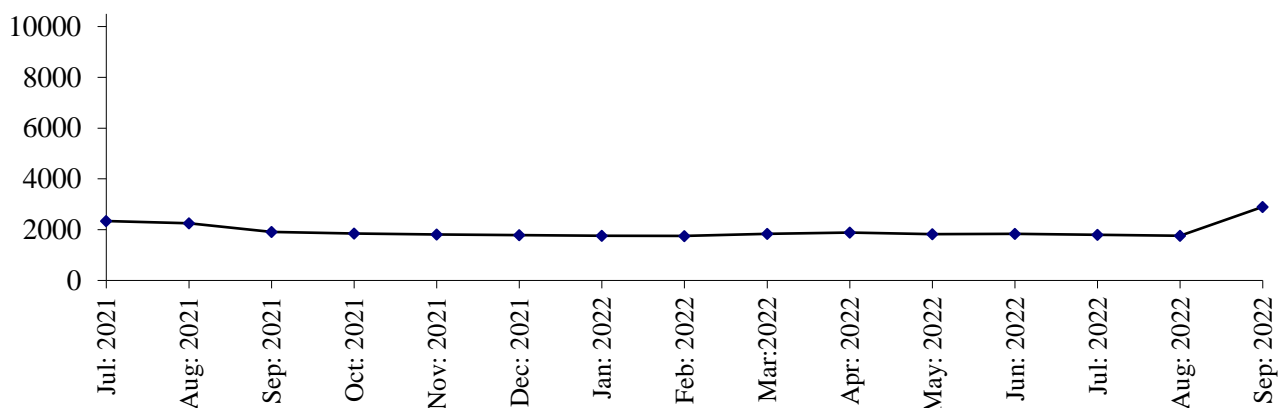
Employment

Total Employment in these factories during the month which was 188, which was 1.1% lower than the last month. Out of this total employment, 150 were production workers.

PRODUCTION OF ELECTRIC MOTORS

(Nos.)

July 2021 to September 2022



DIESEL ENGINES

Coverage

This report covers fifteen (15) factories of Diesel Engines in the Punjab Province.

Production

These fifteen factories covered under the survey and 217 complete diesel engines manufactured during the month, which was 3.3% higher than the last month.

Employment

Total employment in these factories during the month was 24, which is same as it was in previous month. Out of this total employment, 15 were production workers.

PRODUCTION OF DIESEL ENGINES

(Nos.)

July 2021 to September 2022

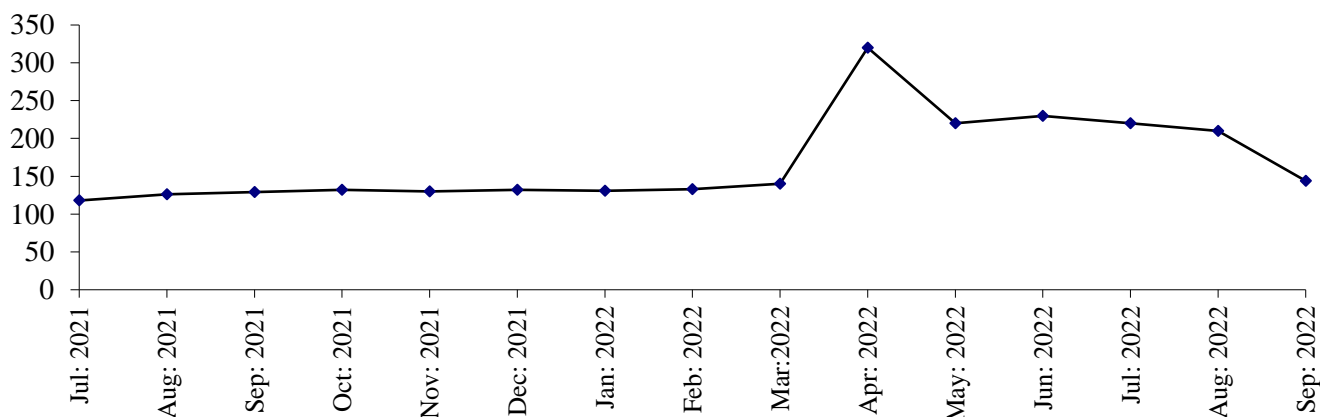


Table No: 32 MANUFACTURINGACTIVITYOFLIGHT ENGINEERING INDUSTRY

Year (July – June) / Month	Re-rolled Steel Bars / Angles (M. Tons)	Bicycles (Nos.)	Electric Fans (Nos.)	Electric Motors (Nos.)	Diesel Engines (N0s.)
2006-07	490894	486349	1469494	7942	14997
2007-08	411062	535519	1654165	5818	18952
2008-09	343506	419897	1697140	6604	16906
2009-10	321369	447207	2128884	7068	20157
2010-11	312433	345272	1940346	7667	10285
2011-12	289874	262096	1858883	5857	2861
2012-13	266669	232979	1909412	5752	2219
2013-14	257569	206459	1870475	9906	2117
2014-15	264406	210931	1870291	9013	2045
2015-16	320769	198966	1970506	7319	495
2016-17	367619	200218	2461369	9206	1554
2017-18	485131	202168	2498919	41793	1120
2018-19	382890	173545	2508085	56819	908
2019-20	289350	141125	2124301	39312	1294
2020-21	312922	79310	2498634	30054	1644
2021-22	308749	141236	2589903	22832	1941
(Jul: – Sep:)	<u>76624</u>	<u>32100</u>	<u>769626</u>	<u>6507</u>	<u>373</u>
Jul:	26742	10400	290116	2344	118
Aug:	24691	10700	265414	2257	126
Sep:	25191	11000	214096	1906	129
Oct:	25165	11402	201040	1844	132
Nov:	24414	11490	175414	1805	130
Dec:	26782	11700	165902	1780	132
Jan:	26680	12019	155467	1763	131
Feb:	26512	12129	167449	1754	133
Mar:	25494	12402	199415	1837	140
Apr:	27009	12304	221120	1886	320
May:	25144	12304	255147	1819	220
Jun:	24925	12990	279413	1837	230
<u>2022-23</u>					
(Jul: – Sep:)	<u>73851</u>	<u>38526</u>	<u>647180</u>	<u>5180</u>	<u>647</u>
Jul:	24423	13007	261144	1802	220
Aug:	24411	13000	211119	1757	210
Sep:	25017	12519	174917	1621	217

Table No: 33 TOTAL EMPLOYMENT (Nos.) OF LIGHT ENGINEERING INDUSTRY*

Year (July – June)/ Month	Re-rolled Steel Bars / Angles (M.Tons)	Bicycles (Nos.)	Electric Fans (Nos.)	Electric Motors (Nos.)	Diesel Engines (N0s.)
2006-07	1165	2046	1867	112	199
2007-08	1106	2160	1881	72	199
2008-09	1103	2257	1894	69	200
2009-10	1134	2124	2124	63	223
2010-11	1218	2009	2120	64	191
2011-12	1193	1612	2351	64	155
2012-13	1188	1318	2172	58	147
2013-14	1269	1214	2307	64	154
2014-15	1299	1060	2208	63	154
2015-16	1317	907	2090	65	150
2016-17	1372	885	2325	121	146
2017-18	1310	883	2549	130	133
2018-19	1304	759	2673	158	52
2019-20	1013	751	1817	191	22
2020-21	1067	686	2141	197	20
2021-22	1077	686	2229	213	21
(Jul: - Sep:)	<u>1093</u>	<u>686</u>	<u>2229</u>	<u>213</u>	<u>21</u>
Jul:	1111	686	2260	215	21
Aug:	1082	686	2285	215	21
Sep:	1086	686	2141	209	21
Oct:	1061	686	2065	200	21
Nov:	1054	686	2050	198	21
Dec:	1072	686	2030	197	21
Jan:	1070	686	2010	195	21
Feb:	1080	686	2050	194	21
Mar:	1078	686	2140	196	21
Apr:	1082	686	2186	199	24
May	1074	686	2199	197	24
Jun:	1071	686	2229	198	24
<u>2022-23</u>					
(Jul: – Sep:)	<u>1078</u>	<u>686</u>	<u>2181</u>	<u>190</u>	<u>24</u>
Jul:	1070	686	2210	192	24
Aug:	1067	686	2188	190	24
Sep:	1097	686	2144	188	24

* = *Monthly averages over the three months.*

Table No: 34 PRODUCTION WORKERS (Nos.) OF LIGHT ENGINEERING INDUSTRY *

Year (July – June)/ Month	Re-rolled Steel Bars / Angles (M.Tons)	Bicycles (Nos.)	Electric Fans (Nos.)	Electric Motors (Nos.)	Diesel Engines (N0s.)
2006-07	821	1814	1483	89	146
2007-08	780	1900	1545	62	157
2008-09	757	1905	1542	60	160
2009-10	782	1892	1748	57	154
2010-11	870	1843	1709	57	126
2011-12	857	1540	1904	57	99
2012-13	843	1289	1761	50	95
2013-14	905	1161	1850	55	99
2014-15	920	992	1745	54	100
2015-16	934	836	1658	56	97
2016-17	976	820	1865	113	93
2017-18	926	804	1994	119	86
2018-19	916	696	2066	122	34
2019-20	706	679	1425	147	15
2020-21	780	527	1735	151	14
2021-22	786	527	1815	157	16
(Jul: – Sep:)	<u>794</u>	<u>527</u>	<u>1840</u>	<u>167</u>	<u>15</u>
Jul:	810	527	1850	168	15
Aug:	785	527	1840	167	15
Sep:	788	527	1830	165	15
Oct:	783	527	1780	155	15
Nov:	780	527	1765	153	15
Dec:	785	527	1750	152	15
Jan:	785	527	1730	150	15
Feb:	788	527	1760	150	15
Mar:	788	527	1810	150	15
Apr:	782	527	1877	157	16
May	777	527	1888	156	16
Jun:	775	527	1907	157	16
<u>2022-23</u>					
(Jul: – Sep:)	<u>776</u>	<u>527</u>	<u>1885</u>	<u>152</u>	<u>21</u>
Jul:	773	527	1899	154	21
Aug:	770	527	1886	152	21
Sep:	784	527	1871	150	21

* = Monthly averages over the three months.

PERFORMANCE OF PHARMACEUTICAL INDUSTRY

Report for the month of September 2022

Coverage

This report covers thirty six (36) Pharmaceutical Industries in the Punjab Province.

Production

Overall production of these 36 pharmaceutical factories during the month was 17.5% and 6.4% higher than September, 2022 and September 2021 respectively.

These factories produced 276502 thousand Nos. of Tablets, 1381 thousand Ltrs., of Liquids/Syrups, 45875 thousand Nos. of Capsules, 16197 thousand Nos. of Injections, 60590 kgs. of Ointments and 5 thousand Ltrs. of Galanicals (Tincture/Spirits). The production of Tablets, Liquids, Capsules, Ointments and Galanicals was 26.5%, 0.7%, 3.0%, 1.2% and 66.7% higher whereas the production of Injections was 2.3% lower than the last month respectively.

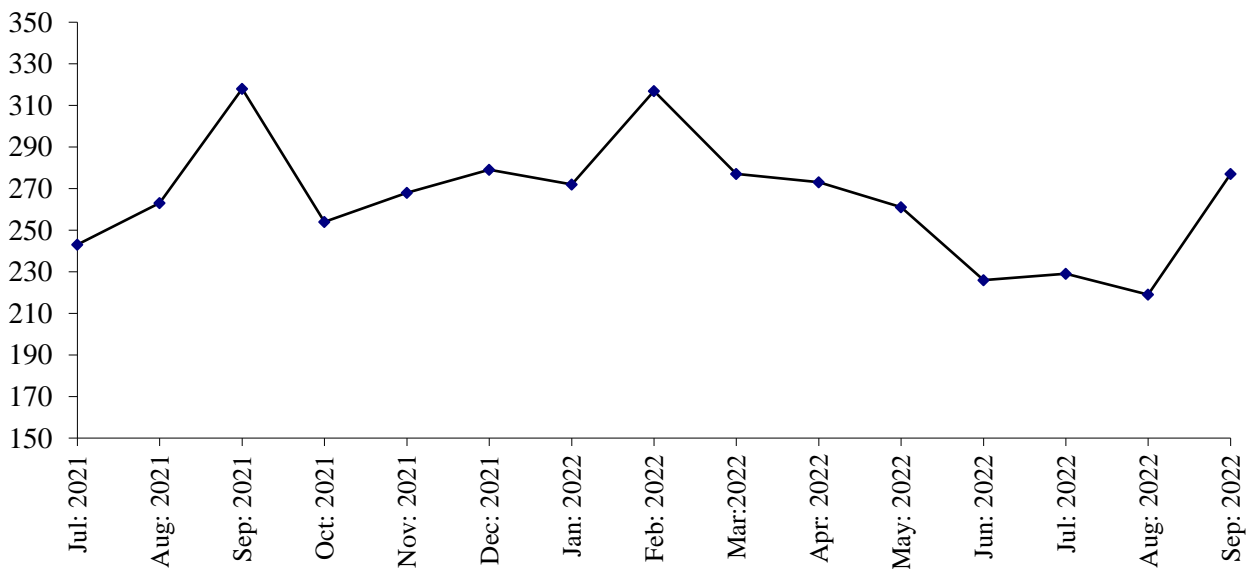
Employment

Total employment in these factories during the month was 8060 which is 0.2% higher than the last month. Out of this total employment 3324 were production workers. Total wages/salaries during the month were 271.1 million rupees.

PRODUCTION OF TABLETS

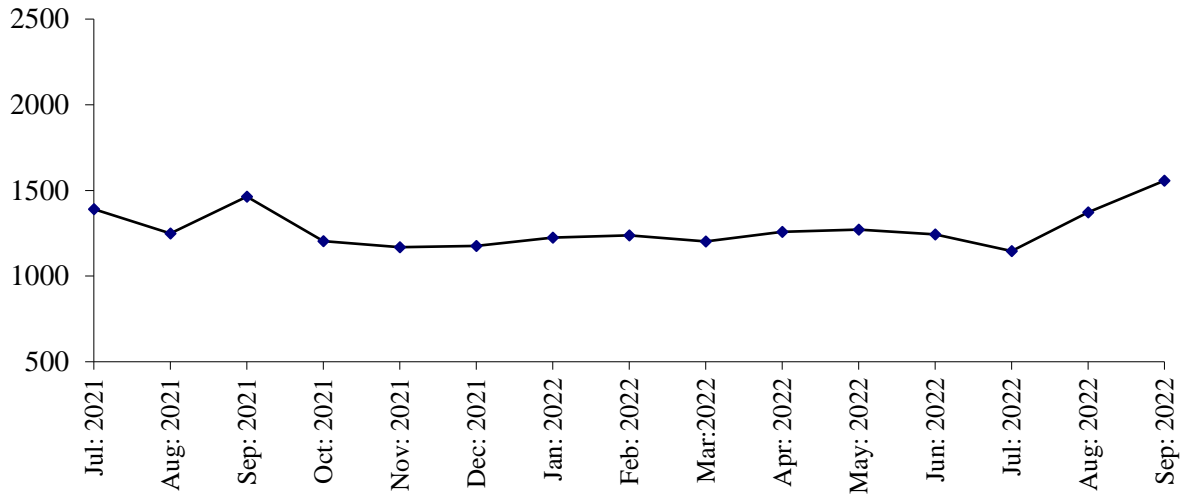
July 2021 to September 2022

(000 Nos.)



PRODUCTION OF LIQUIDS

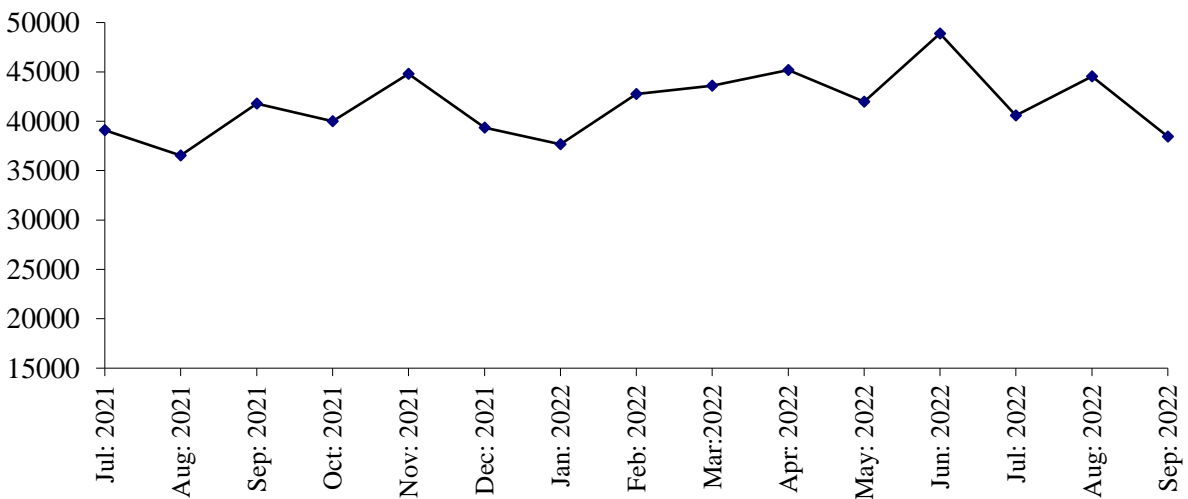
July 2021 to September 2022



PRODUCTION OF CAPSULES

July 2021 to September 2022

(000 Nos.)



PRODUCTION OF INJECTIONS

July 2021 to September 2022

(000 Nos.)

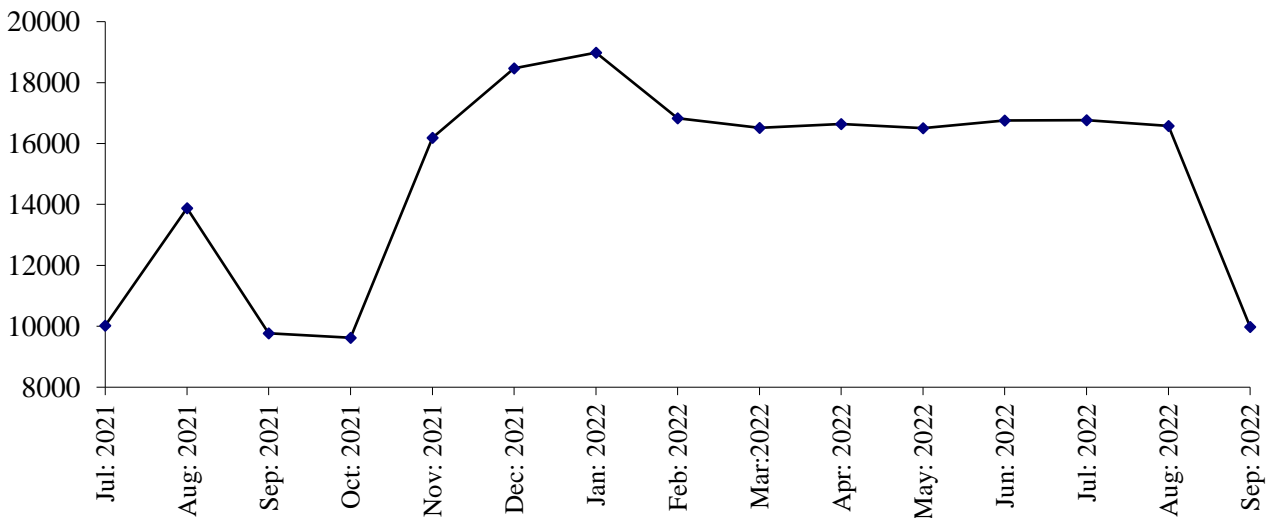


Table 35:MANUFACTURING ACTIVITY OF PHARNMACEUTICAL INDUSTRY

Year (July – June) / Month	No. Of Reporting Factories	P R O D U C T I O N					
		Tablets (000 Nos.)	Liquids/ Syrups (000Ltrs.)	Capsules (000 Nos.)	Injections (000 Nos.)	Ointments (Kgs.)	Galanicals Tinctures/ Spirits (000 Ltrs.)
2006-07	33	2722382	9277	131360	99050	69678	189
2007-08	38	2459558	23771	148007	110837	98499	87
2008-09	40	2286638	21267	121093	89615	105595	73
2009-10	40	2373104	23222	134594	99608	189148	62
2010-11	41	2486495	25211	165294	109708	187430	50
2011-12	41	2487861	25546	224249	132544	209841	41
2012-13	40	2873661	35457	339450	119598	196597	34
2013-14	36	2639613	16264	261919	137051	238299	185
2014-15	36	2593592	18838	310520	140827	229778	75
2015-16	36	2823449	21636	339151	133352	242367	46
2016-17	36	2530717	24085	295120	194717	732361	343
2017-18	35	2893883	15602	371962	149607	570468	121
2018-19	36	2826410	14207	420278	144788	567249	39
2019-20	36	2847315	14011	447276	119438	640721	74
2020-21	36	3096704	17504	481498	110866	595075	69
2021-22	36	3249998	15091	501673	180141	518897	54
(Jul: – Sep:)	36	824131	4103	117413	33667	149405	14
Jul:	36	242868	1391	39093	10024	48632	3
Aug:	36	263232	1249	36537	13877	47480	5
Sep:	36	318031	1463	41783	9766	53293	6
Oct:	36	253686	1205	39993	9624	55395	4
Nov:	36	268300	1168	44809	16186	35665	8
Dec:	36	278537	1177	39348	18468	36490	7
Jan:	36	271875	1225	37686	18983	41480	3
Feb:	36	316549	1237	42758	16830	32575	2
Mar:	36	276784	1203	43600	16515	28100	3
Apr:	36	273023	1258	45194	16638	38510	4
May	36	261458	1271	41986	16503	47835	3
Jun:	36	225655	1244	48886	16760	53442	6
2022-23							
(Jul: – Sep:)	36	723999	3899	131009	49541	174490	10
Jul:	36	228997	1146	40576	16771	53945	2
Aug:	36	218500	1372	44558	16573	59955	3
Sep:	36	276502	1381	45875	16197	60590	5

Table 36: EMPLOYMENT AND WAGES / SALARIES OF PHARMACEUTICAL INDUSTRY

Year (July – June) / Month	No. Of Reporting Factories	E M P L O Y M E N T (Nos.)			WAGES /SALARIES (000 Rs.)	
		Total	Production Workers	Office Staff	Total	Production Workers
2006-07	33	5148	2596	2552	37178	14090
2007-08	38	5591	2914	2677	60574	27592
2008-09	40	5737	3115	2622	75446	35208
2009-10	40	5967	3294	2673	84295	41482
2010-11	41	7468	3475	3993	109964	38722
2011-12	41	7802	3518	4284	122250	38078
2012-13	40	7619	3397	4222	128323	37873
2013-14	36	7255	3043	4212	141281	37844
2014-15	36	7271	3136	4135	149144	37763
2015-16	36	6887	2887	4000	142875	38347
2016-17	36	7069	3338	3731	166039	42770
2017-18	35	7190	3095	4095	180431	46461
2018-19	36	7287	3080	4207	186677	48238
2019-20	36	7926	3244	4682	215121	53959
2020-21	36	7726	3388	4338	241910	59134
2021-22	36	8092	3318	4774	263957	61029
(Jul: – Sep:)	36	8113	3279	4834	255438	56022
Jul:	36	8252	3306	4946	247515	58344
Aug:	36	8013	3190	4823	257671	57722
Sep:	36	8073	3341	4732	261127	52000
Oct:	36	8108	3356	4752	270869	63056
Nov:	36	8054	3357	4697	280316	62227
Dec:	36	8033	3326	4707	261493	61262
Jan:	36	8055	3323	4732	260153	60755
Feb:	36	8063	3324	4739	260283	60348
Mar:	36	8097	3313	4784	265353	60829
Apr:	36	8114	3321	4793	268839	67358
May	36	8135	3344	4791	269121	67740
Jun:	36	8101	3318	4783	264743	60704
2022-23						
(Jul: – Sep:)	36	8061	3319	4742	269954	61748
Jul:	36	8080	3313	4767	268248	61642
Aug:	36	8043	3319	4724	270475	61754
Sep:	36	8060	3324	4736	271141	61847

* = Monthly average over the three months.

**LIST OF IMPORTANT TELEPHONES
BUREAU OF STATISTICS, PUNJAB AND ITS FIELD OFFICES**

NAME OF OFFICERS	DESIGNATION	OFFICE TELEPHONE
Sajid Rasul	Director General	042-99232901
Saira Abid	Deputy Director (CIS)	042-99232907
Sana Gull	Assistant Director (CIS)	-do-
Sana Ashraf	Statistical Officer (CIS)	-do-
Muhammad Kashif	Statistical Officer (CIS)	-do-
Rizwan Bashir	Statistical Officer (CIS)	-do-
Mehboob Baig	Statistical Officer (CIS)	-do-
DESIGNATION	BUREAU'S FIELD OFFICES/ADDRESS	
Deputy Director	Tosha Khana Near Cholistan Development Authority, Bahawalpur	062-9250193
Deputy Director	House No. 70-A, Khyaban-e-Sarwar, Dera Ghazi Khan	064-9330108
Deputy Director	2nd Floor Azam Plaza, Near Passport Office, Bukhari Road, Gujranwala	055-9200419
Deputy Director	P-45, Main Road, Al Faiz Colony, Satiana Road Faisalabad	041-9330531
Deputy Director	Near Circuit House, Multan	061-9200930
Deputy Director	Abad Complex Murree Road, Rawalpindi	051-9292035
Deputy Director	52 Umar Park, Sargodha	048-3765387
Deputy Director	34-H Shadman Town, Sahiwal	0404-4507560
Assistant Director	House No. 24, Z-Block, Model Town, Bahawalnagar	063-9330002
Assistant Director	Mohallah Mandi Town, House No.198 Block No. 12 Near Pracha Filling Station, Jhang Road, Bhakkar	0453-9200338
Assistant Director	Street No.4 2nd Floor Mohallah Shumali Chah Loharn Behkari Road, Chakwal	0543-554086
Assistant Director	House No.720-A Gulberg Colony, Kasur	049-2723615
Assistant Director	House No. 190, Employees Colony, Layyah	0606-920273
Assistant Director	Gallah Huntar Pura, Opposite Larri Adda, Christian Town, Sialkot	052-4291219
Assistant Director	Opposite Govt. Vocational College, Nabi Pura, Hiran Minar Road, Sheikhupura	056-3791770

**LIST OF IMPORTANT TELEPHONES
BUREAU OF STATISTICS, PUNJAB AND ITS FIELD OFFICES**

NAME OF OFFICERS	DESIGNATION	OFFICE TELEPHONE
Sajid Rasul	Director General	042-99232901
Saira Abid	Deputy Director (CIS)	042-99232907
Sana Gull	Assistant Director (CIS)	-do-
Sana Ashraf	Statistical Officer (CIS)	-do-
Rizwan Bashir	Statistical Officer (CIS)	-do-
Muhammad Kashif	Statistical Officer (CIS)	-do-
Mehboob Baig	Statistical Officer (CIS)	-do-
DESIGNATION	BUREAU'S FIELD OFFICES/ADDRESS	
Deputy Director	Tosha Khana Near Cholistan Development Authority, Bahawalpur	062-9250193
Deputy Director	House No. 70-A, Khyaban-e-Sarwar, Dera Ghazi Khan	064-9330108
Deputy Director	2nd Floor Azam Plaza, Near Passport Office, Bukhari Road, Gujranwala	055-9200419
Deputy Director	P-45, Main Road, Al Faiz Colony, Satiana Road Faisalabad	041-9330531
Deputy Director	Near Circuit House, Multan	061-9200930
Deputy Director	Abad Complex Murree Road, Rawalpindi	051-9292035
Deputy Director	52 Umar Park, Sargodha	048-3765387
Deputy Director	34-H Shadman Town, Sahiwal	0404-4507560
Assistant Director	House No. 24, Z-Block, Model Town, Bahawalnagar	063-9330002
Assistant Director	Mohallah Mandi Town, House No.198 Block No. 12 Near Pracha Filling Station, Jhang Road, Bhakkar	0453-9200338
Assistant Director	Street No.4, 2nd Floor Mohallah Shumali Chah Loharn Behkari Road, Chakwal	0543-554086
Assistant Director	House No.720-A Gulberg Colony, Kasur	049-2723615
Assistant Director	House No. 190, Employees Colony, Layyah	0606-920273
Assistant Director	Gallah Huntar Pura, Opposite Larri Adda, Christian Town, Sialkot	052-4291219
Assistant Director	Opposite Govt. Vocational College, Nabi Pura, Hiran Minar Road, Sheikhupura	056-3791770